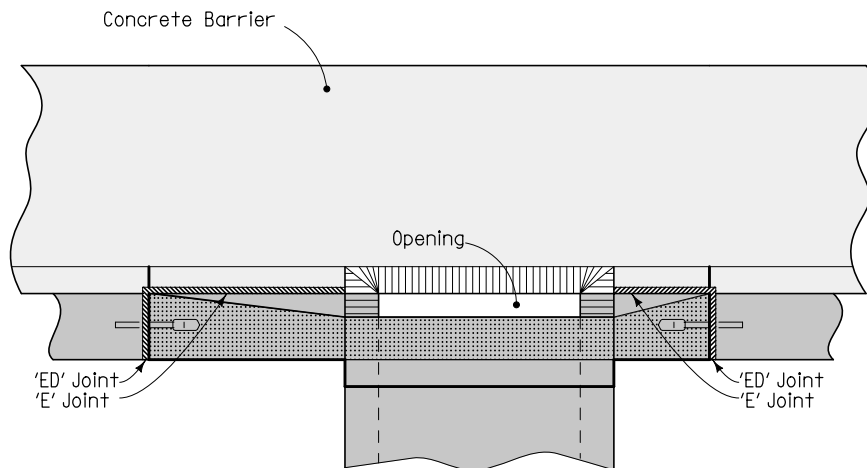



PLAN

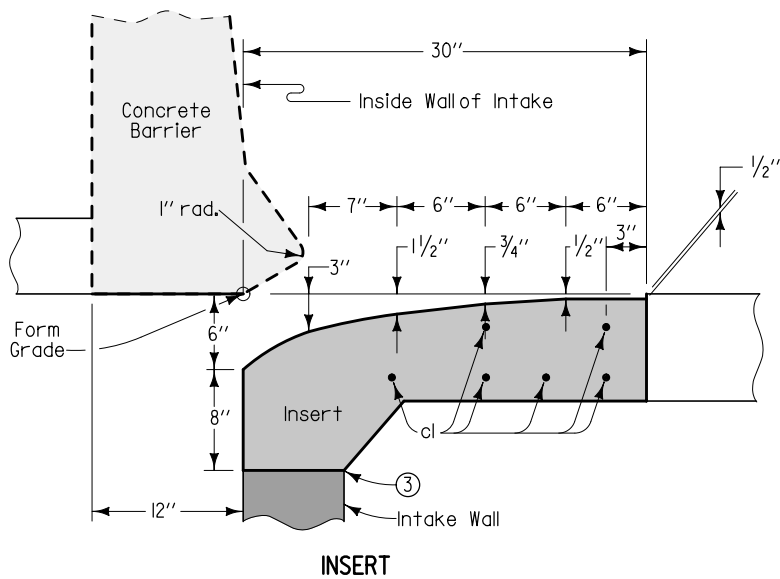


ELEVATION

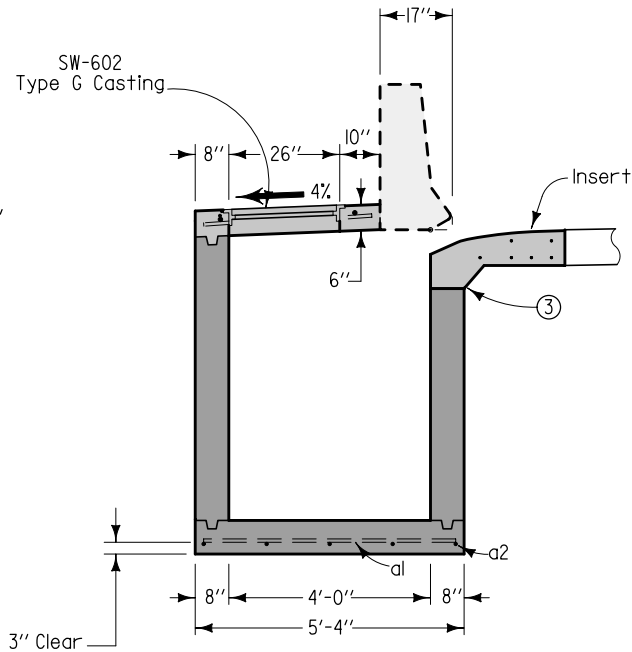
- ① 'ED' joint. Refer to PV-101 for details.
- ② (6) 1/4-inch smooth dowelbars in insert and 6 dowelbars in concrete barrier per installation.

Possible Contract Item:  
Intake, SW-546

 Iowa Department of Transportation	REVISION	
	2	04-19-11
<b>STANDARD ROAD PLAN</b>		<b>SW-546</b>
<small>REVISIONS: Updated references to renamed standards.</small>		<small>SHEET 1 of 2</small>
<i>Deanna Maifeld</i> <small>APPROVED BY DESIGN METHODS ENGINEER</small>		
<b>SINGLE OPEN-THROAT BARRIER INTAKE</b>		

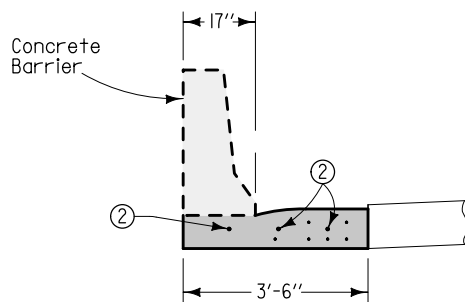


INSERT



TYPICAL SECTION

- ② (6) 1/4-inch smooth dowelbars in insert and 6 dowelbars in concrete barrier per installation.
- ③ Trowel smooth and place subgrade paper to prevent bond.



SECTION A-A

REINFORCING BAR LIST					
MARK	LOCATION	NO.	LENGTH	WEIGHT	SPACING
a1	Base	5	5'-0"	16.7	15"
a2	Base	5	5'-0"	16.7	15"
b1	Top	3	3'-4"	6.7	See Detail
b2	Top	2	5'-0"	6.7	See Detail
cl	Insert	6	1'-4"	44.4	See Detail
cl	Insert	6	13'-1"	52.4	See Detail
Total				91 lbs. or 99 lbs.	

 Iowa Department of Transportation	REVISION
	2 04-19-11
	<b>SW-546</b>
<b>STANDARD ROAD PLAN</b>	
REVISIONS: Updated references to renamed standards.	
 APPROVED BY DESIGN METHODS ENGINEER	
<b>SINGLE OPEN-THROAT BARRIER INTAKE</b>	