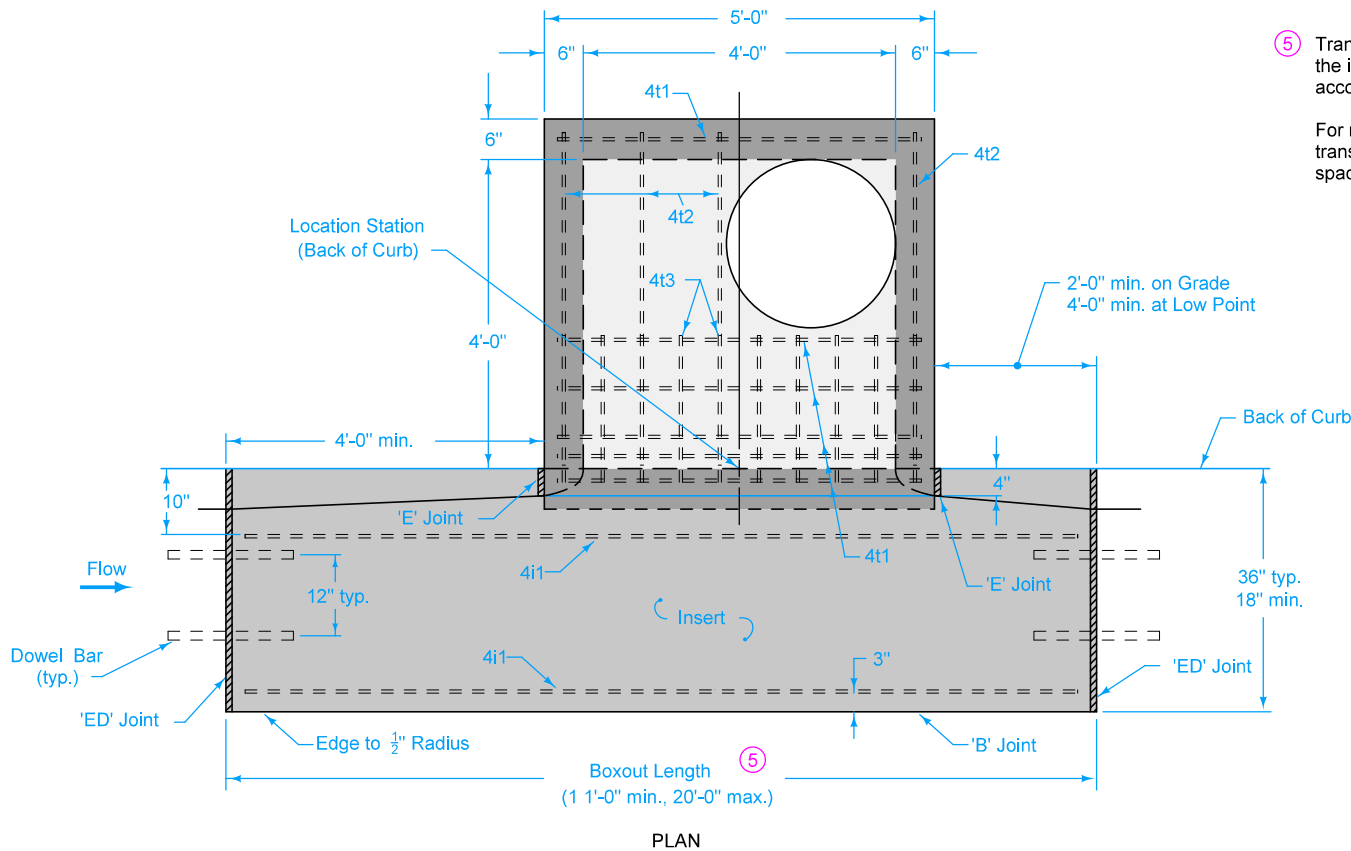


TYPICAL SECTION

INSERT

- ① Modify dimensions as required to accommodate other curb heights when specified.
- ② Insert shaping may be modified for insert widths less than 36 inches. For an 18 inch insert, reduce dimensions indicated by 1/2 inch.
- ③ 12 inch minimum wall height above all pipes.
- ④ Slope of 1.5% or as specified in the contract documents.

SUDAS IOWADOT	REVISION	2	10-21-14
	FIGURE 6010.508	STANDARD ROAD PLAN	SW-508
REVISIONS: Added circle note 4.			SHEET 1 of 2
Paul D. Wigand SUDAS DIRECTOR		Brian Smith DESIGN METHODS ENGINEER	
SINGLE OPEN-THROAT CURB INTAKE, LARGE BOX			



⑤ Transverse joint spacing on new concrete pavement is controlled by the intake boxout. Adjust adjacent joint spacing as required to accommodate boxouts.

For retrofit intakes, match existing pavement joints. Stop any transverse pavement joints that do not conform to the minimum spacing requirements at the edge of the insert area.

MAXIMUM PIPE DIAMETERS	
Precast Structure	Cast-in-place Structure
30"	36"

REINFORCING BAR LIST						
Mark	Size	Location	Shape	Count	Length	Spacing
4t1	4	Top	—	7	4'-8"	See Insert
4t2	4	Top	—	4	4'-6"	12"
4t3	4	Top	—	10	1'-10"	6"
4b1	4	Base	—	6	4'-6"	1 1"
4b2	4	Base	—	6	4'-6"	1 1"
4i1	4	Insert	—	4	Boxout Length minus 8"	See Plan
4w1	4	Walls	—	16	Wall Height minus 4"	14"
4w2	4	Walls	—	Varies	4'-8"	12"
4w3	4	Walls	—	Varies	4'-8"	12"

SUDAS IOWADOT	REVISION	2	10-21-14
	FIGURE 6010.508	STANDARD ROAD PLAN	SW-508
REVISIONS: Added circle note 4.			SHEET 2 of 2

Paul D. Wigand
 SUDAS DIRECTOR

Brian Smith
 DESIGN METHODS ENGINEER

**SINGEL OPEN-THROAT CURB
INTAKE, LARGE BOX**