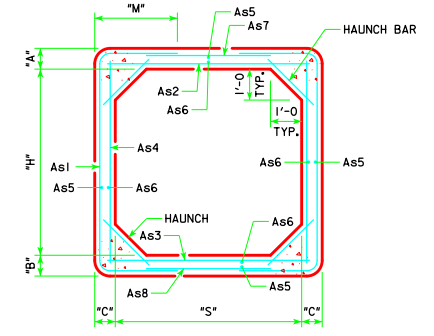
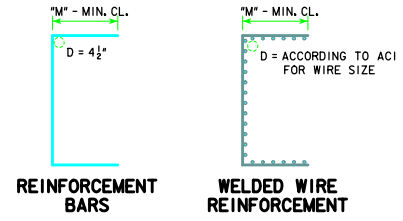


ENGL\SHSIGN\PRECAST\CULVERTS.DGN - PRCB 6-13 - THIS SHEET ISSUED 01-13.

VARIABLE DIMENSIONS AND QUANTITIES FOR 6' SPAN BARREL SECTIONS																				
DIMENSIONS									REINFORCEMENT REQUIREMENTS (IN <sup>2</sup> /FT)								WEIGHT (LB/FT)			
SIZE	CLASS	f'c (ksi)	FILL	S	H	A	B	C	As1		As2		As3		As4			As7/As8		
									AREA	LENGTH	M	AREA	LENGTH	AREA	LENGTH	AREA	LENGTH	AREA	LENGTH	
6x3	1	5.0	2-10	6	3	8	8	8	0.36	9'-2"	2'-8"	0.29	6'-6"	0.27	6'-6"	0.20	3'-6"	0.20	3'-8"	2370
	2	5.0	11-19	6	3	8	8	8	0.48	9'-2"	2'-8"	0.40	6'-6"	0.40	6'-6"	0.20	3'-6"	0.20	3'-8"	2370
	3	5.0	20-25	6	3	8	8	8	0.61	9'-2"	2'-8"	0.50	6'-6"	0.50	6'-6"	0.20	3'-6"	0.20	3'-8"	2370
6x4	1	5.0	2-11	6	4	8	8	8	0.31	10'-2"	2'-8"	0.35	6'-6"	0.33	6'-6"	0.20	4'-6"	0.20	3'-8"	2570
	2	5.0	12-19	6	4	8	8	8	0.41	10'-2"	2'-8"	0.47	6'-6"	0.48	6'-6"	0.20	4'-6"	0.20	3'-8"	2570
	3	5.0	20-25	6	4	8	8	8	0.52	10'-2"	2'-8"	0.59	6'-6"	0.60	6'-6"	0.20	4'-6"	0.20	3'-8"	2570
6x5	1	5.0	2-12	6	5	8	8	8	0.28	11'-2"	2'-8"	0.39	6'-6"	0.38	6'-6"	0.20	5'-6"	0.20	3'-8"	2770
	2	5.0	13-19	6	5	8	8	8	0.36	11'-2"	2'-8"	0.51	6'-6"	0.53	6'-6"	0.20	5'-6"	0.20	3'-8"	2770
	3	5.0	20-25	6	5	8	8	8	0.46	11'-2"	2'-8"	0.65	6'-6"	0.66	6'-6"	0.20	5'-6"	0.20	3'-8"	2770
6x6	1	5.0	2-12	6	6	8	8	8	0.26	12'-2"	2'-8"	0.43	6'-6"	0.42	6'-6"	0.20	6'-6"	0.20	3'-8"	2970
	2	5.0	13-19	6	6	8	8	8	0.33	12'-2"	2'-8"	0.54	6'-6"	0.56	6'-6"	0.20	6'-6"	0.20	3'-8"	2970
	3	5.0	20-25	6	6	8	8	8	0.41	12'-2"	2'-8"	0.68	6'-6"	0.70	6'-6"	0.20	6'-6"	0.20	3'-8"	2970
6x7	1	5.0	2-13	6	7	8	8	8	0.24	13'-2"	2'-8"	0.46	6'-6"	0.46	6'-6"	0.20	7'-6"	0.20	3'-8"	3170
	2	5.0	14-19	6	7	8	8	8	0.30	13'-2"	2'-8"	0.55	6'-6"	0.58	6'-6"	0.20	7'-6"	0.20	3'-8"	3170
	3	5.0	20-25	6	7	8	8	8	0.38	13'-2"	2'-8"	0.68	6'-6"	0.71	6'-6"	0.20	7'-6"	0.20	3'-8"	3170
6x8	1	5.0	2-13	6	8	8	8	8	0.23	14'-2"	2'-8"	0.49	6'-6"	0.50	6'-6"	0.20	8'-6"	0.20	3'-8"	3370
	2	5.0	14-19	6	8	8	8	8	0.29	14'-2"	2'-8"	0.55	6'-6"	0.59	6'-6"	0.21	8'-6"	0.20	3'-8"	3370
	3	5.0	20-25	6	8	8	8	8	0.36	14'-10"	3'-0"	0.68	6'-6"	0.72	6'-6"	0.25	8'-6"	0.20	3'-0"	3370



TYPICAL BARREL SECTION



**BENT BAR DETAILS**

ALL DIMENSIONS ARE OUT TO OUT.  
D = PIN DIAMETER (MIN.).  
PIN DIAMETER MAY BE INCREASED IF  
NEEDED TO MAINTAIN CLEAR COVER.

**NOTES:**

- DIMENSIONS "A", "B" & "C" LISTED IN THE BAR LIST ARE IN INCHES.
- LONGITUDINAL REINFORCEMENT DENOTED AS As5 AND As6 MUST BE PLACED IN SLAB, FLOOR, AND WALLS AND MUST BE 0.06 IN<sup>2</sup>/FT MINIMUM.
- ALL REINFORCEMENT LENGTHS AND AREAS ARE MINIMUM REQUIREMENTS.
- IF REINFORCING BARS ARE SUBSTITUTED FOR WELDED WIRE REINFORCING, DIMENSION "M" AND/OR LENGTH OF THE As7/As8 REINFORCEMENT SHALL BE ADJUSTED TO ENSURE ADEQUATE LAP LENGTH IS PROVIDED.
- WEIGHT OF SECTIONS ASSUMES A DENSITY OF 150 PCF AND SQUARED CORNERS.
- SEE PRCB G1-13 AND G2-13 FOR ADDITIONAL INFORMATION AND NOTES.

LATEST REVISION DATE	 APPROVED BY BRIDGE ENGINEER	 STANDARD DESIGN <b>SINGLE PRECAST REINFORCED CONCRETE BOX CULVERTS</b> JANUARY, 2013	
		<b>CULVERT BARREL DETAILS</b> 6' SPAN BARREL SECTIONS	<b>PRCB 6-13</b>