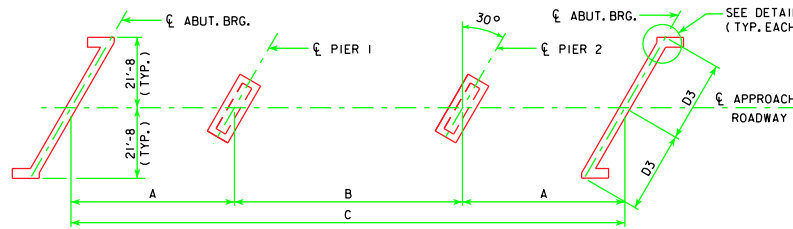
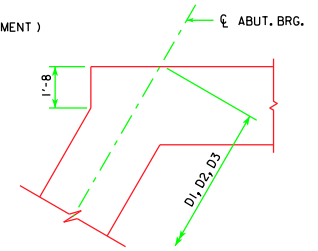


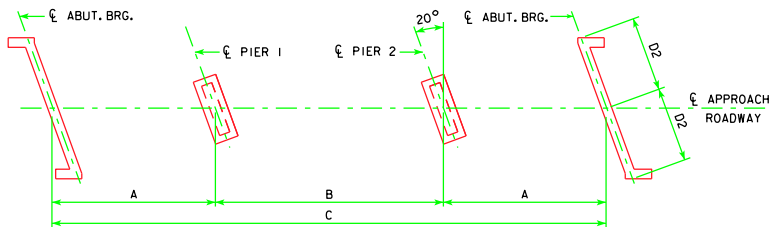
30° SKEW (R.A.)



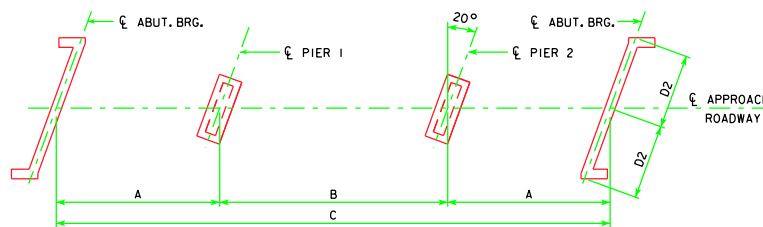
30° SKEW (L.A.)



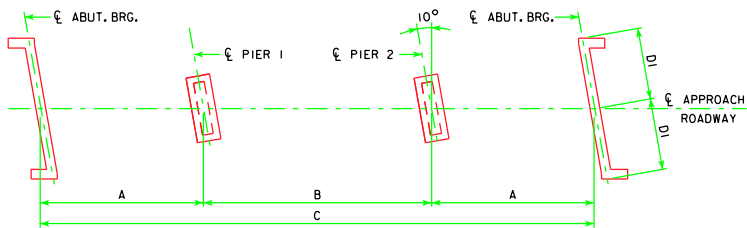
DETAIL A  
DIMENSION D1, D2, D3 APPLIES AT LOCATION SHOWN ALONG THE  $\bar{\bar{C}}$  ABUTMENT BEARING (TYP.)



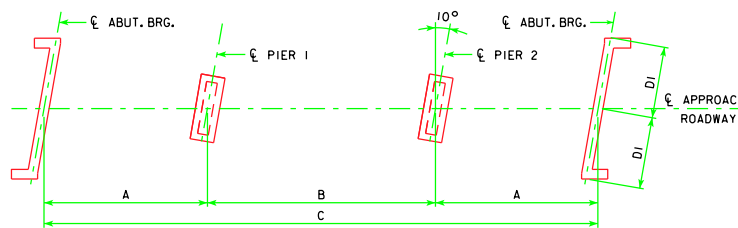
20° SKEW (R.A.)



20° SKEW (L.A.)

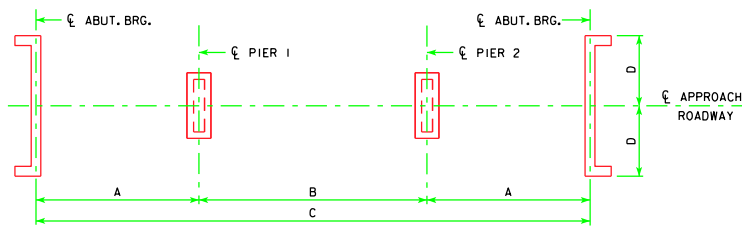


10° SKEW (R.A.)



10° SKEW (L.A.)

- NOTES:  
1. ALL SUBSTRUCTURE UNITS ARE CONSTRUCTED PARALLEL TO THE SKEW INDICATED FOR EACH BRIDGE.  
2. R.A. = RIGHT AHEAD  
L.A. = LEFT AHEAD



0° SKEW

BEAM BRIDGE STANDARDS							
LENGTH	A	B	C	0°SKEW D	10°SKEW D1	20°SKEW D2	30°SKEW D3
340'-0"	102'-0"	136'-0"	340'-0"	21'-8"	22'-0"	23'-0 1/4"	25'-0 1/4"

LATEST REVISION DATE	 APPROVED BY BRIDGE ENGINEER	 STANDARD DESIGN - 40' ROADWAY, 3 SPAN BRIDGES <b>ROLLED STEEL BEAM BRIDGES</b> JUNE, 2010	
		SUBSTRUCTURE LAYOUTS	RS40-005-10