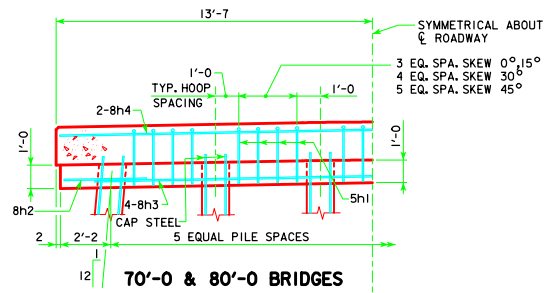
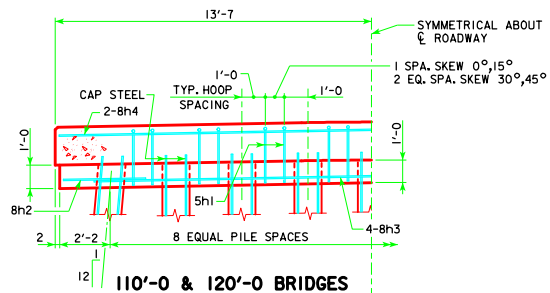


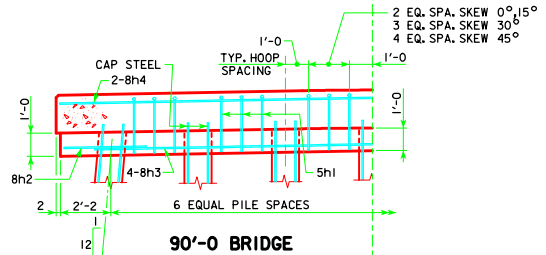
REVISED 12-08 - REVISED PILES REQUIRED FOR 110'-0 BRIDGE.



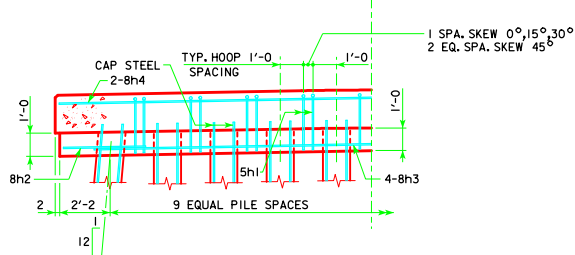
**70'-0 & 80'-0 BRIDGES**



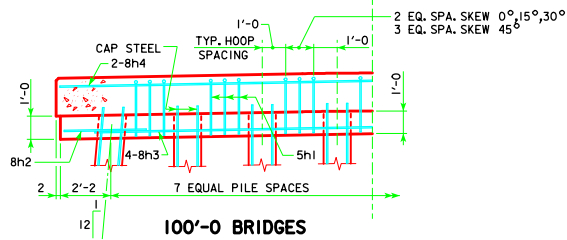
**110'-0 & 120'-0 BRIDGES**



**90'-0 BRIDGE**

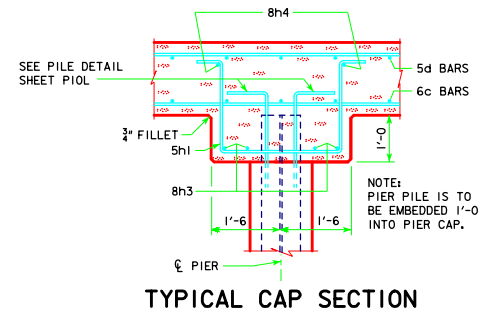


**130'-0, 140'-0 & 150'-0 BRIDGES**



**100'-0 BRIDGES**

**HALF SECTION NEAR PIER**  
SHOWING STIRRUP SPACING AND NUMBER OF PILING  
NOTE: BOTTOM OF CAP ELEVATIONS WILL BE REQUIRED AT THE CL OF ROADWAY AND AT EACH EXTERIOR PILE.



12-08 LATEST REVISION DATE  <i>Thomas E. McQuinn</i> APPROVED BY BRIDGE ENGINEER		<b>Iowa Department of Transportation</b> Highway Division STANDARD DESIGN - 24' ROADWAY, 3 SPAN BRIDGES <b>CONTINUOUS CONCRETE</b> <b>SLAB BRIDGES</b> NOVEMBER, 2006
	<b>MONOLITHIC</b> <b>PIER CAP DETAILS</b> <b>ALL BRIDGES</b>	<b>J24-24-06</b>
	SHEET 2 OF 2	