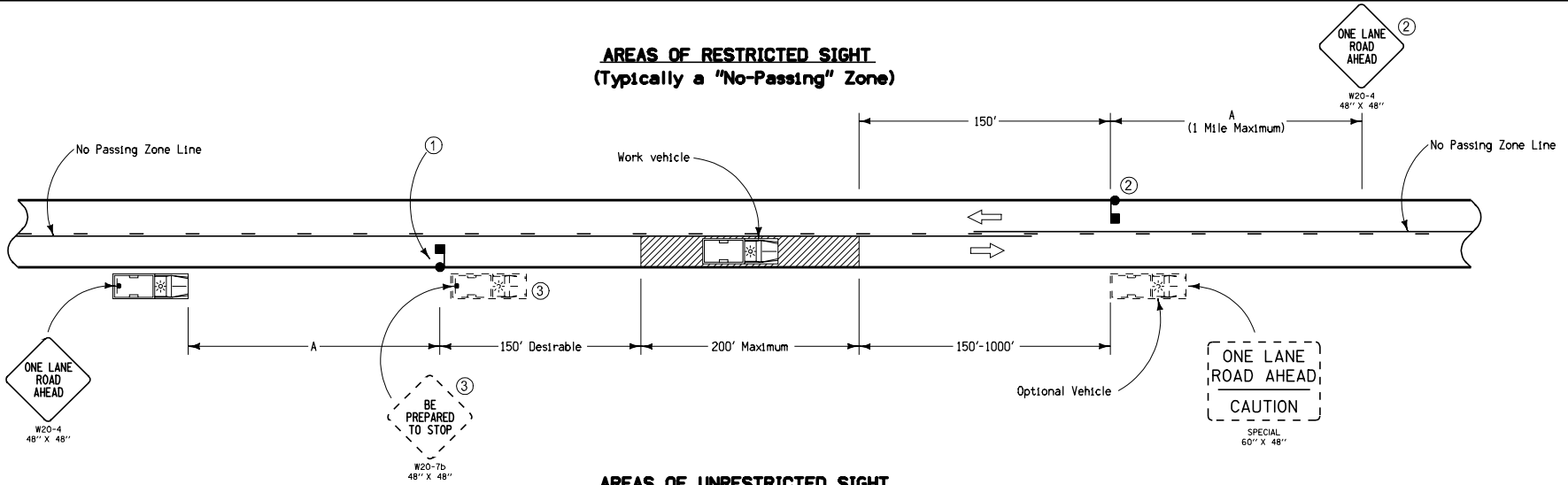
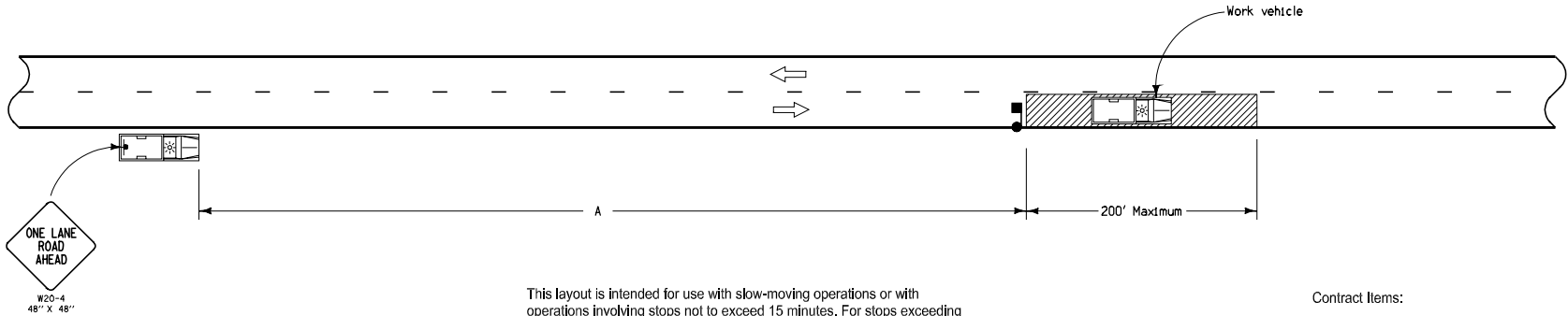


**AREAS OF RESTRICTED SIGHT**  
(Typically a "No-Passing" Zone)



**AREAS OF UNRESTRICTED SIGHT**



This layout is intended for use with slow-moving operations or with operations involving stops not to exceed 15 minutes. For stops exceeding 15 minutes or in heavy traffic situations, use TC-213.

Contract Items:  
Traffic Control  
Flaggers

All vehicles shall be equipped with an amber revolving light or an amber strobe light.

- ① When a stop is made for less than 5 minutes in an area of restricted sight distance, traffic in the closed lane shall be held by a flagger and allowed to pass when conditions are safe.
- ② When a stop is made or work proceeds in an area where sight distance is restricted from either direction and is anticipated to be more than 5 minutes, a second flagger and ONE LANE ROAD AHEAD sign shall be required.
- ③ This vehicle and sign may be used in lieu of a flagger for Road Rater tests.

**LEGEND**

- Traffic Sign
- Work Area
- Flagger
- Direction of Traffic

Speed Limit (mph)	A min.
25 or less	200'
30-35	300'
40-45	500'
50 or greater	1000'

Iowa Department of Transportation <b>STANDARD ROAD PLAN</b>	REVISION 1   10-16-07
	<b>TC-213</b> SHEET 1 of 1
REVISIONS: Modified speed limit table values.	
APPROVED BY DESIGN METHODS ENGINEER <i>Deanna Macfild</i>	
<b>SLOW MOVING VEHICLE OPERATING IN THE TRAFFIC LANE</b>	