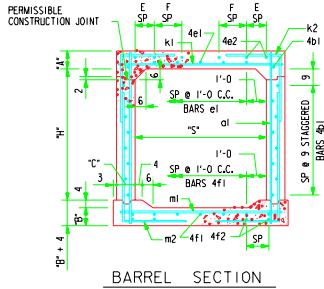
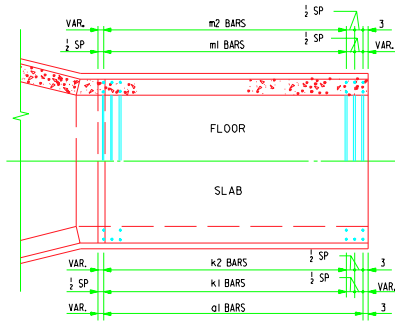


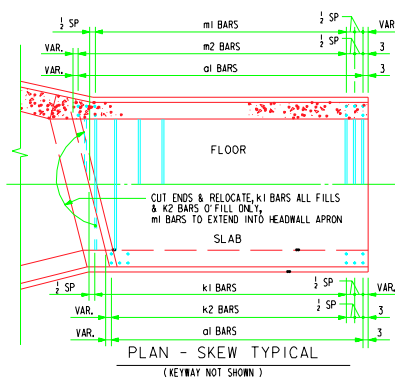
VARIABLE DIMENSIONS AND QUANTITIES FOR BARREL SECTIONS



BARREL SECTION



PLAN - 0° SKEW
(KEYWAY NOT SHOWN)



PLAN - SKEW TYPICAL
(KEYWAY NOT SHOWN)

NOTE: ALL LONGITUDINAL BARREL STEEL SHALL EXTEND AT LEAST TO THE BACKFACE OF PARAPET.

DIMENSIONS		BAR LIST																		QUANTITIES																											
		ol		b1		o1		e2		f1		f2		k1		m1		k2		m2		CONCRETE YD ʒ FT		STEEL																							
FILL	S	H	A	B	C	D	SIZE	SP	L	SIZE	SP	NO.	SIZE	SP	NO.	SIZE	SP	NO.	SIZE	SP	NO.	SIZE	SP	L	h	v	SLAB	FLOOR	WALLS	TOTAL	LBS/FT																
0	5	3	10	10	9	6	4	6	4'-7	4	9	8	4	12	4	4	14	16	5	4	12	6	4	16	4	5	9	6'-2	4	9	6'-8	4	6	6'-10	3'-9	3'-1	4	6	6'-3	2'-4	2'-11	.233	.253	.145	.631	78.03	
1	5	3	10.5	10	9	6	4	6	4'-7	4	9	8	4	12	4	4	13	-	4	4	12	6	4	16	4	5	9	6'-2	4	9	6'-8	4	6	5'-1	1'-11	3'-2	4	6	5'-3	2'-4	2'-11	.243	.253	.145	.641	72.63	
2	5	3	8	10	9	9	4	12	4'-5	4	9	8	4	12	4	4	12	-	4	4	12	6	4	13	4	5	9	6'-2	4	9	6'-8	4	6	4'-9	1'-10	2'-11	4	6	4'-10	1'-4	2'-11	.193	.253	.145	.591	64.42	
3	5	3	8	10	9	9	4	12	4'-5	4	9	8	4	12	4	4	11	-	4	4	12	6	4	11	4	4	9	6'-2	4	9	6'-8	4	6	4'-8	1'-9	2'-11	4	6	4'-8	1'-9	2'-11	.193	.253	.145	.591	60.50	
4 - 8	5	3	8	10	9	9	4	12	4'-5	4	9	8	4	12	4	4	9	-	4	4	12	6	4	10	4	4	9	6'-2	4	9	6'-8	4	6	4'-6	1'-7	2'-11	4	6	4'-7	1'-8	2'-11	.193	.253	.145	.591	59.82	
9 - 10	5	3	8	10	9	9	4	12	4'-5	4	9	8	4	12	4	4	9	-	4	4	12	6	4	9	4	4	9	6'-2	4	9	6'-8	4	6	4'-6	1'-7	2'-11	4	6	4'-6	1'-7	2'-11	.193	.253	.145	.591	59.61	
11 - 15	5	3	8	10	9	9	4	12	4'-5	4	9	8	4	12	4	4	9	-	4	4	12	6	4	9	4	4	9	6'-2	5	12	6'-8	4	6	4'-6	1'-7	2'-11	4	6	4'-6	1'-7	2'-11	.193	.253	.145	.591	60.89	
16 - 20	5	3	8	10	9	6	4	6	4'-5	4	9	8	4	12	4	4	9	-	4	4	12	6	4	9	4	4	5	9	6'-2	5	9	6'-8	4	6	4'-6	1'-7	2'-11	4	6	4'-6	1'-7	2'-11	.193	.253	.145	.591	72.08
21 - 25	5	3	8	10	9	6	4	6	4'-5	4	9	8	4	12	4	4	9	-	4	4	12	6	4	9	4	4	6	12	6'-2	6	9	6'-8	4	6	4'-6	1'-7	2'-11	4	6	4'-6	1'-7	2'-11	.193	.253	.145	.591	77.37
0	5	4	10	10	9	6	4	6	5'-7	4	9	12	4	12	4	4	14	16	5	4	12	6	4	16	4	5	9	6'-2	4	9	6'-8	4	6	6'-10	3'-9	3'-1	4	6	6'-3	2'-4	3'-11	.233	.253	.201	.687	86.08	
1	5	4	10.5	10	9	6	4	6	5'-7	4	9	12	4	12	4	4	13	-	4	4	12	6	4	16	4	5	9	6'-2	4	9	6'-8	4	6	6'-2	2'-3	3'-11	4	6	6'-2	2'-4	3'-11	.243	.253	.201	.697	80.45	
2	5	4	8	10	9	9	4	12	5'-5	4	9	12	4	12	4	4	12	-	4	4	12	6	4	12	4	5	9	6'-2	5	12	6'-8	4	6	4'-9	1'-10	2'-11	4	6	5'-9	1'-10	3'-11	.193	.253	.201	.647	72.24	
3	5	4	8	10	9	9	4	12	5'-5	4	9	12	4	12	4	4	11	-	4	4	12	6	4	11	4	4	9	6'-2	4	9	6'-8	4	6	4'-9	1'-9	2'-11	4	6	5'-8	1'-9	3'-11	.193	.253	.201	.647	67.24	
4 - 8	5	4	8	10	9	9	4	12	5'-5	4	9	12	4	12	4	4	10	-	4	4	12	6	4	10	4	4	9	6'-2	4	9	6'-8	4	6	4'-6	1'-7	2'-11	4	6	5'-7	1'-8	3'-11	.193	.253	.201	.647	66.55	
9 - 10	5	4	8	10	9	9	4	12	5'-5	4	9	12	4	12	4	4	9	-	4	4	12	6	4	9	4	4	9	6'-2	4	9	6'-8	4	6	4'-6	1'-7	2'-11	4	6	5'-6	1'-7	3'-11	.193	.253	.201	.647	66.34	
11 - 15	5	4	8	10	9	9	4	12	5'-5	4	9	12	4	12	4	4	9	-	4	4	12	6	4	9	4	4	9	6'-2	5	12	6'-8	4	6	4'-6	1'-7	2'-11	4	6	5'-6	1'-7	3'-11	.193	.253	.201	.647	67.63	
16 - 20	5	4	8	10	9	6	4	6	5'-5	4	9	12	4	12	4	4	9	-	4	4	12	6	4	9	4	4	5	9	6'-2	5	9	6'-8	4	6	4'-6	1'-7	2'-11	4	6	5'-6	1'-7	3'-11	.193	.253	.201	.647	80.13
21 - 25	5	4	8	10	9	6	4	6	5'-5	4	9	12	4	12	4	4	9	-	4	4	12	6	4	9	4	4	6	9	6'-2	6	9	6'-8	4	6	4'-6	1'-7	2'-11	4	6	5'-6	1'-7	3'-11	.193	.253	.201	.647	88.34
0	5	5	10	10	9	6	4	6	6'-7	4	9	14	4	12	4	4	12	18	5	4	12	6	4	16	4	5	9	6'-2	4	9	6'-8	4	6	6'-10	3'-9	3'-1	4	6	7'-3	2'-4	4'-11	.233	.254	.257	.743	91.42	
1	5	6	10.5	10.5	9	6	4	6	6'-8	4	9	14	4	12	4	4	15	-	4	4	12	6	4	16	4	5	9	6'-2	4	9	6'-8	4	6	5'-3	2'-1	3'-2	4	6	7'-3	2'-4	4'-11	.243	.264	.257	.764	88.05	
2	5	5	8	10	9	9	4	12	6'-5	4	9	14	4	12	4	4	12	-	4	4	12	6	4	13	4	5	9	6'-2	5	12	6'-8	4	6	4'-9	1'-10	2'-11	4	6	6'-10	1'-11	4'-11	.193	.253	.257	.703	77.84	
3	5	5	8	10	9	9	4	12	6'-5	4	9	14	4	12	4	4	12	-	4	4	12	6	4	12	4	4	9	6'-2	4	9	6'-8	4	6	4'-9	1'-10	2'-11	4	6	6'-9	1'-10	4'-11	.193	.253	.257	.703	75.08	
4 - 8	5	5	8	10	9	9	4	12	6'-5	4	9	14	4	12	4	4	10	-	4	4	12	6	4	10	4	4	9	6'-2	4	9	6'-8	4	6	4'-7	1'-8	2'-11	4	6	6'-7	1'-8	4'-11	.193	.253	.257	.703	72.16	
9 - 10	5	5	8	10	9	9	4	12	6'-5	4	9	14	4	12	4	4	9	-	4	4	12	6	4	10	4	4	9	6'-2	4	9	6'-8	4	6	4'-6	1'-7	2'-11	4	6	6'-7	1'-8	4'-11	.193	.253	.257	.703	71.95	
11 - 15	5	5	8	10	9	9	4	12	6'-5	4	9	14	4	12	4	4	9	-	4	4	12	6	4	10	4	4	5	12	6'-2	5	9	6'-8	4	6	4'-6	1'-7	2'-11	4	6	6'-7	1'-8	4'-11	.193	.253	.257	.703	76.66
16 - 20	5	5	8	10	9	6	4	6	6'-5	4	9	14	4	12	4	4	9	-	4	4	12	6	4	10	4	4	5	9	6'-2	5	9	6'-8	4	6	4'-6	1'-7	2'-11	4	6	6'-7	1'-8	4'-11	.193	.253	.257	.703	87.05
21 - 25	5	5	8	10	9	6	4	6	6'-5	4	9	14	4	12	4	4	9	-	4	4	12	6	4	10	4	4	6	9	6'-2	6	9	6'-8	4	6	4'-6	1'-7	2'-11	4	6	6'-7	1'-8	4'-11	.193	.253	.257	.703	95.26
0	5	6	10.5	10.5	9	6	4	6	7'-8	4	9	16	4	12	4	4	12	18	5	4	12	6	4	16	4	5	9	6'-2	4	9	6'-8	4	6	6'-11	3'-9	3'-2	4	6	8'-4	2'-5	5'-11	.243	.264	.312	.819	100.16	
1	5	6	10.5	10.5	9	6	4	6	7'-8	4	9	16	4	12	4	4	16	-	4	4	12	6	4	16	4	5	9	6'-2	4	9	6'-8	4	6	5'-10	2'-8	3'-2	4	6	8'-3	2'-4	5'-11	.243	.264	.312	.819	96.34	
2	5	6	8	10	9	9	4	12	7'-5	4	9	16	4	12	4	4	13	-	4	4	12	6	4	14	4	5	9	6'-2	5	9	6'-8	4	6	5'-0	2'-11	2'-11	4	6	7'-11	2'-0	5'-11	.193	.253	.312	.758	86.54	
3	5	6	8	10	9	9	4	12																																							