

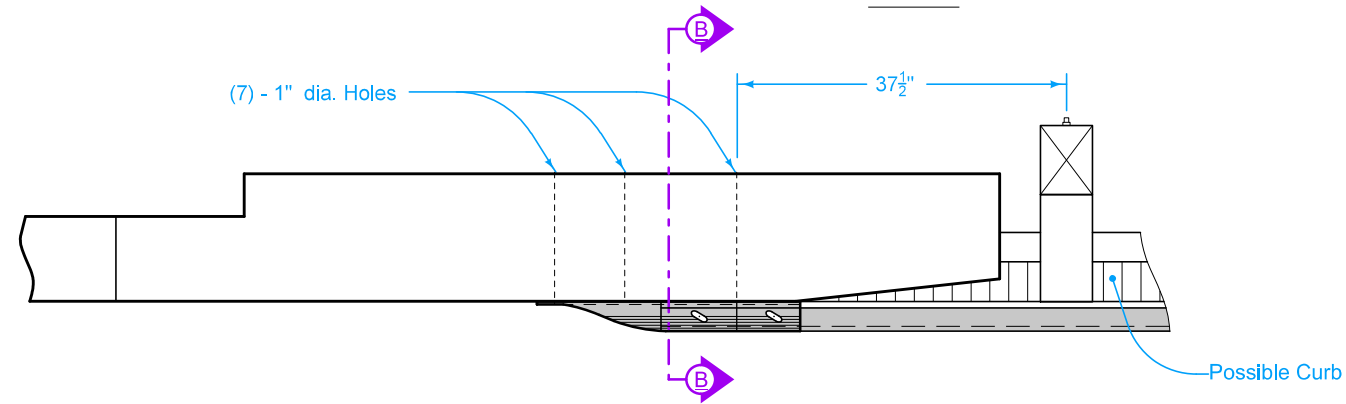
- ① See BA-201.
- ② BTS post # 14 BA-201. BTS post #5 BA-221.
- ③ Lap the Terminal Connector on the outside of the nested thrie beam rails for attachments on the trailing end of a bridge.

Possible Contract Item:
 Steel Beam Guardrail End Anchor, Bolted

Materials included in the Contract Item:
 Thrie-Beam Terminal Connector
 Approved 7/8" x sufficient length Hex Bolts
 Approved 7/8" Hex Nuts
 Approved 15/16" Washers

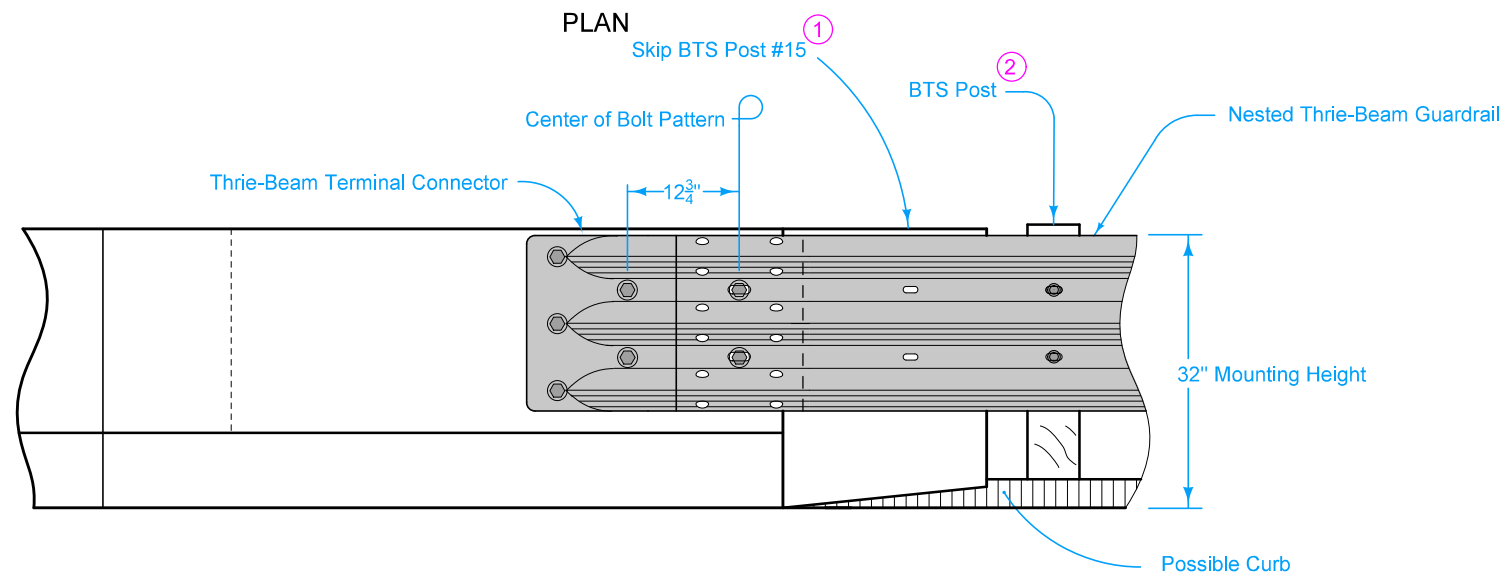
	REVISION	
	4	4-16-24
STANDARD ROAD PLAN		BA-202
REVISIONS: Added note to clarify post #14 (BA-201) and post #5 (BA-221). Added note to clarify center of bolt pattern.		SHEET 1 of 3
APPROVED BY DESIGN METHODS ENGINEER		
STEEL BEAM GUARDRAIL BOLTED END ANCHOR		

TYPE B

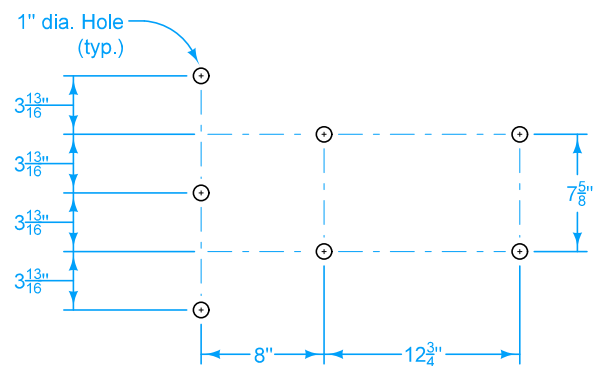


- ① See BA-201.
- ② BTS post # 14 BA-201. BTS post #5 BA-221.
- ④ Baseline of bolt pattern (Center of Bolt Pattern)

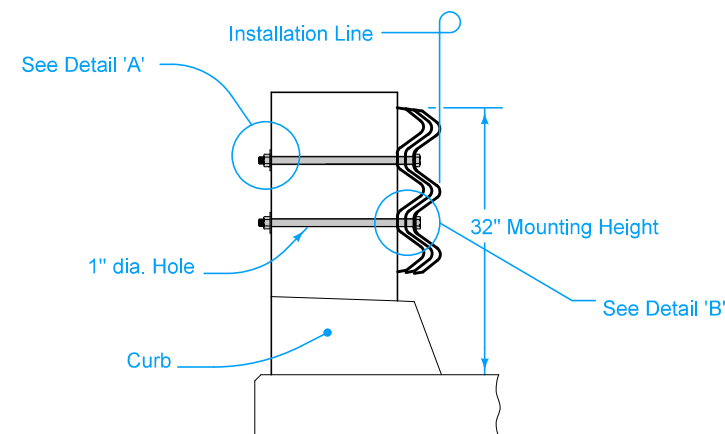
PLAN



ELEVATION



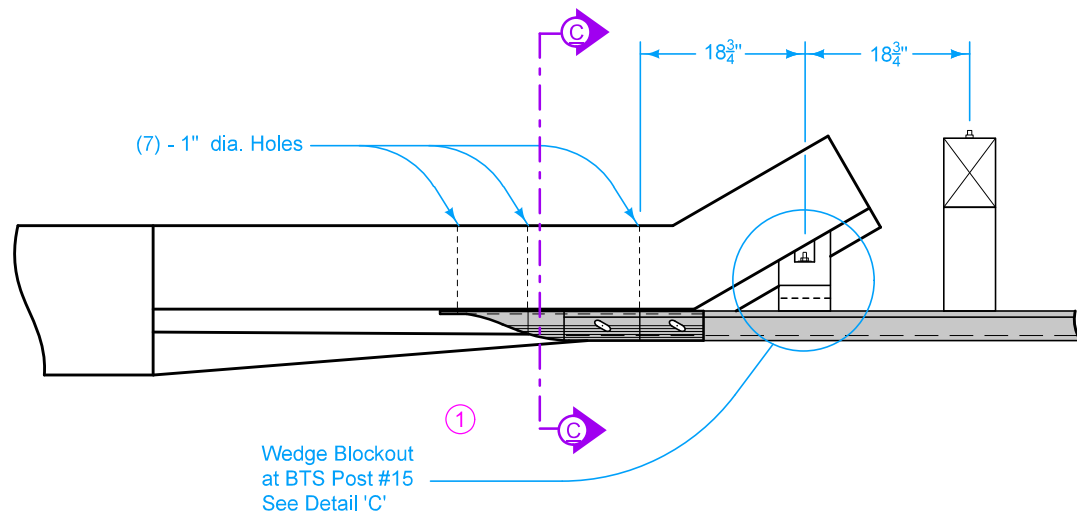
7 - BOLT PATTERN
Thrie - Beam Terminal Connector



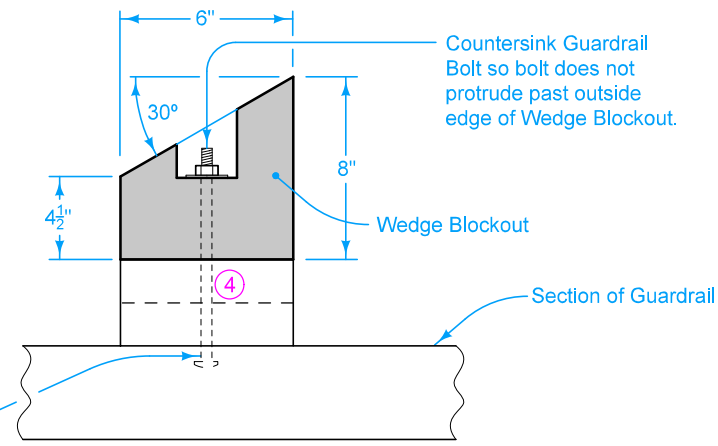
SECTION B-B

	REVISION	
	4	4-16-24
STANDARD ROAD PLAN		BA-202
		SHEET 2 of 3
REVISIONS: Added note to clarify post #14 (BA-201) and post #5 (BA-221). Added note to clarify center of bolt pattern.		
APPROVED BY DESIGN METHODS ENGINEER		
STEEL BEAM GUARDRAIL BOLTED END ANCHOR		

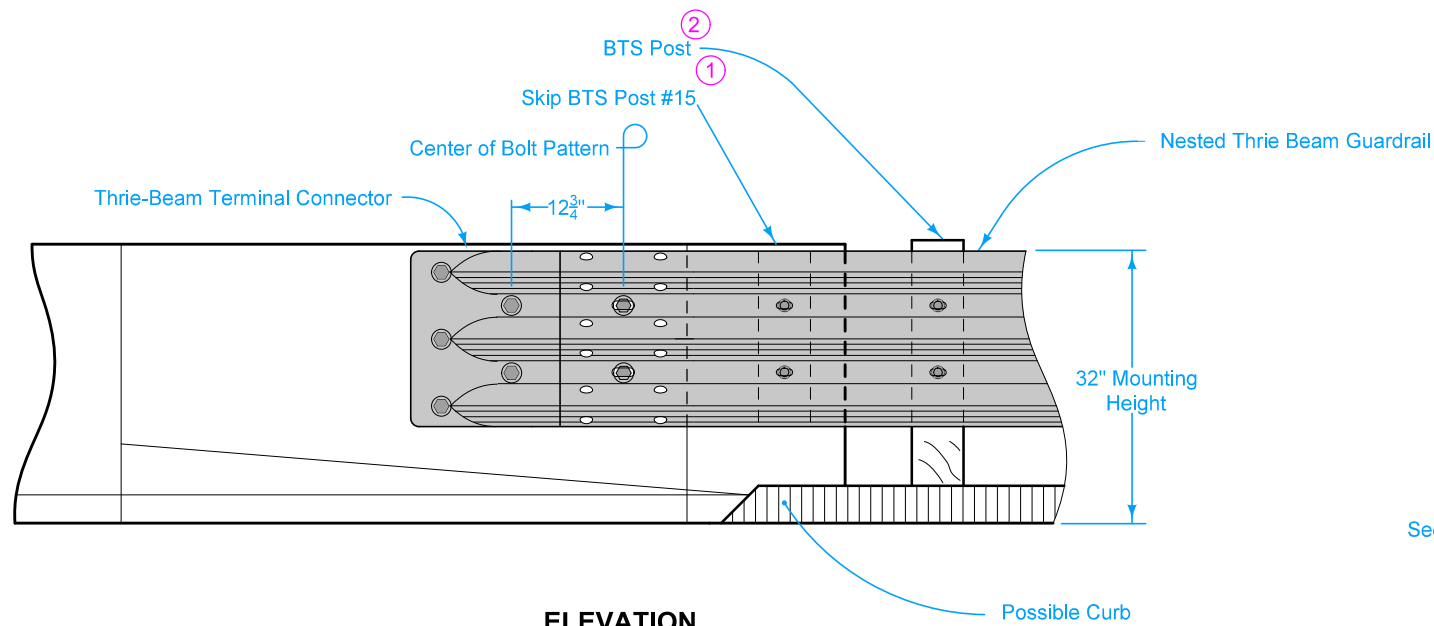
TYPE C



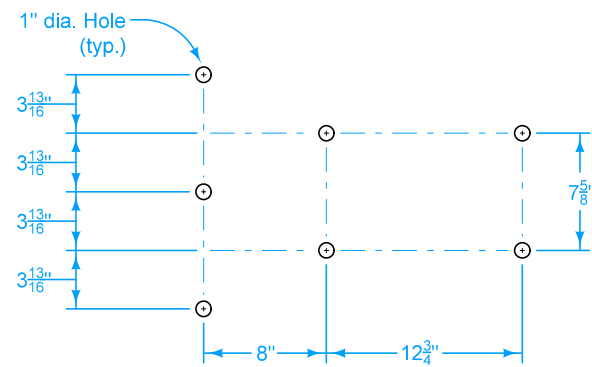
PLAN



DETAIL 'C'

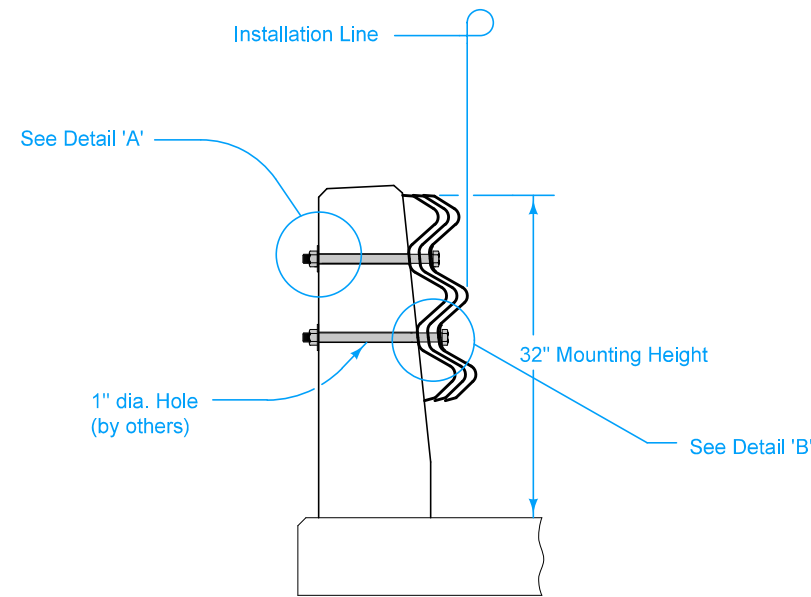


ELEVATION



7 - BOLT PATTERN

Thrie - Beam Terminal Connector



SECTION C-C

- ① See BA-201.
- ② BTS post # 14 BA-201. BTS post #5 BA-221.
- ④ Use treated spacer boards (1 in. x 6 in. or 2 in. x 6 in.) to produce a tight fit between the wedge blockout and endpost. A nominal 1 inch gap is acceptable. Spacer boards are incidental to bolted end anchor.

	REVISION	
	4	4-16-24
STANDARD ROAD PLAN		BA-202
		SHEET 3 of 3
REVISIONS: Added note to clarify post #14 (BA-201) and post #5 (BA-221). Added note to clarify center of bolt pattern.		
APPROVED BY DESIGN METHODS ENGINEER		
STEEL BEAM GUARDRAIL BOLTED END ANCHOR		