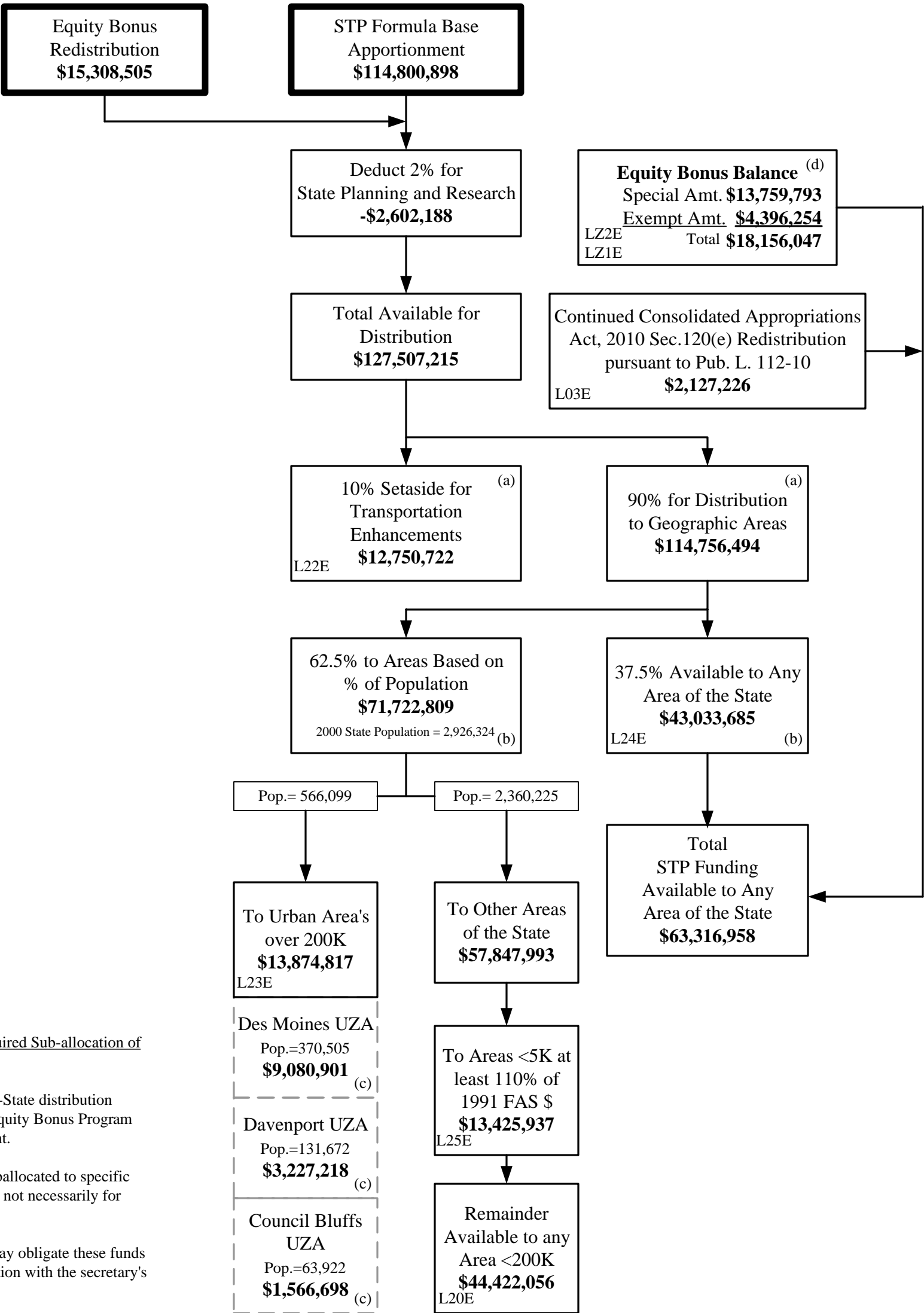


# Surface Transportation Program

## REVISED FY2011 Iowa Apportionment

### \$130,109,403



SAFETEA-LU: Required Sub-allocation of STP Funds:

(a) Setaside(s) & sub-State distribution amount(s) include Equity Bonus Program Redistribution amount.

(b) STP funds are suballocated to specific geographic areas, but not necessarily for specific jurisdictions.

(c) State and MPO may obligate these funds in addition to population with the secretary's approval.

(d) The balance of Equity Bonus Program apportionment has the same eligibilities as STP funds, but is not subject to the STP setaside(s) or the suballocations to the sub-State areas.

Lxx = SAFETEA-LU Appropriation Codes  
All apportionments subject to 92.151% formula funding obligation limitation per Full-Year Continuing Appropriations Act, 2011, Division B of Pub. L. 112-10.

Sub-allocation of STP Funds pursuant to **SAFETEA-LU Extension**  
Source: FHWA Notices: 4510.745, 4520.214 23 Dec 2011 & 4510.746 2 Feb 2012