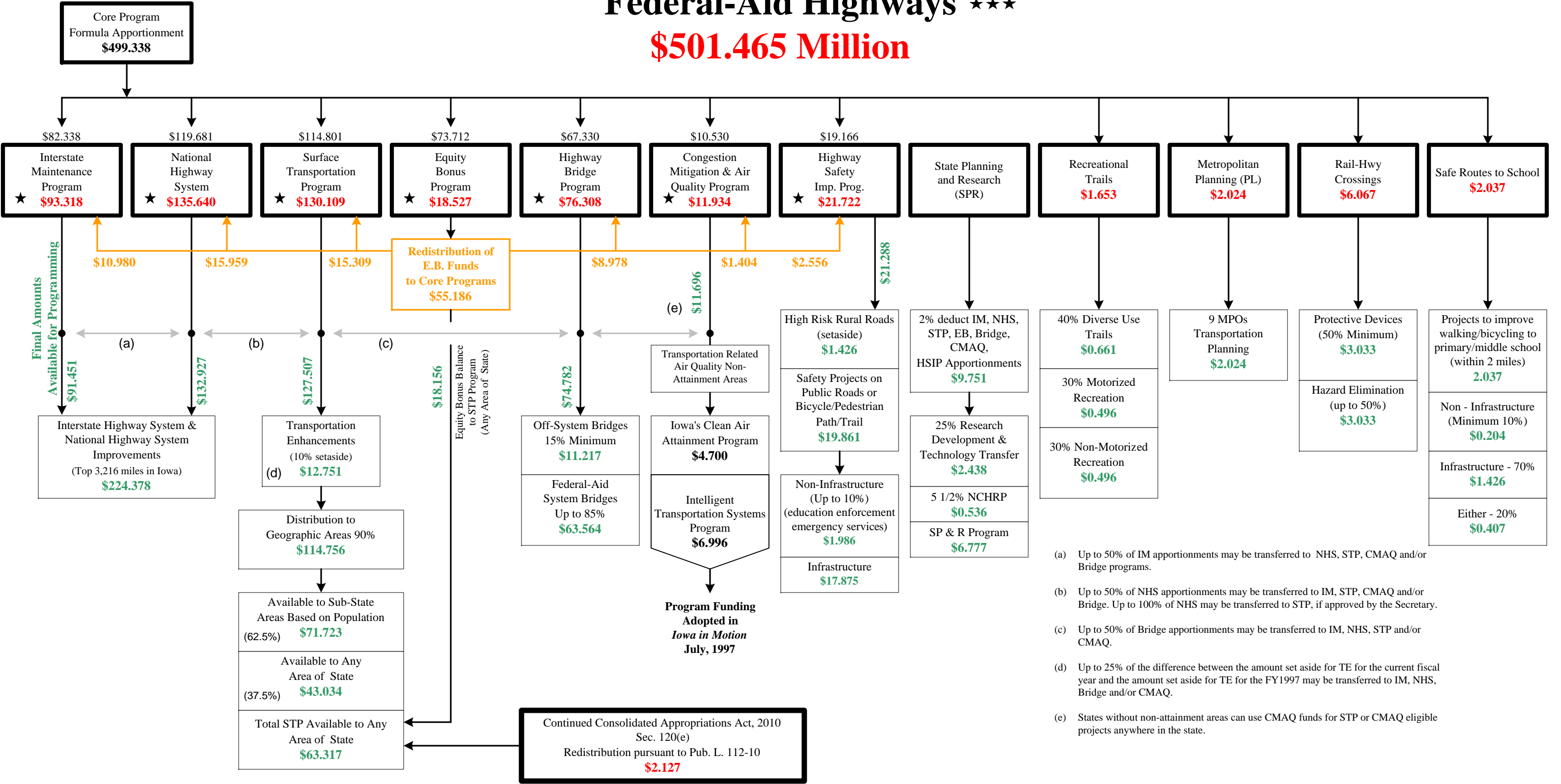


REVISED FY 2011 SAFETEA-LU Extension Apportionments & Allocations to Iowa **

Federal-Aid Highways ***

\$501.465 Million



- Notes:**

 - Amounts do not reflect rescission of \$31.098 million in unobligated apportionment balances pursuant to the Full-Year Continuing Appropriations Act, 2011, Division B of Pub. L. 112-10
 - Apportionment and Allocation amounts are subject to annual obligation limitations.
- ★ Total program apportionment prior to takedown of 2% for State Planning & Research Program.
 - ★ ★ Revised certificate of apportionment as a result of correction to Recreational Trail apportionments and related calculation of Equity Bonus apportionment.
 - ★ ★ ★ Amount includes apportionments and allocations administered by FHWA under the Surface Transportation Extension Act of 2010, Title IV of Pub. L. 111-147, as amended by the Surface Transportation Extension Act of 2010, Part II, Title II of Pub. L. 111-322, and the Surface Transportation Extension Act of 2011, Pub. L. 112-5.

OFFICE OF SYSTEMS PLANNING

Sources:
FHWA Notices: N4510.745 & N4520.214 23 Dec 2011; N4510.746 2 Feb 2012
Full-Year Continuing Appropriations Act, 2011, Division B, Pub. L. 112-10
Surface Transportation Extension Act of 2011, Pub. L. 112-5
Surface Transportation Extension Act of 2010, Part II, Title II of Pub. L. 111-322
Surface Transportation Extension Act of 2010, Title IV of Pub. L. 111-147

W:planning/systemsplanning/icaap/charts/ISTEA_2011/istea_fy11_revised.vsd
JBL-SP Feb. 20, 2012