

PROJECT STATEMENT

Public Hearing

**For the proposed improvement of U.S. 30 in
Linn and Cedar Counties from west of
Wilcox Road to Charles Avenue**

**Linn-Cedar Counties
NHS-30-7(76)--19-57**

**MEETING LOCATION:
Lisbon Community Schools Cafeteria
235 West School Street
Lisbon, Iowa**

October 30, 2012





PUBLIC HEARING

**for the proposed improvement of U.S. 30 in Linn and Cedar Counties
from west of Wilcox Road to Charles Avenue.**

Project NHS-30-7(76)--19-57

October 30, 2012

5:00 – 7:00 PM

Lisbon Community Schools Cafeteria

235 West School St.

Lisbon, IA 52253

To view information concerning this project please go to the following website:

<http://www.iowadot.gov/pim>

INTRODUCTION

Welcome to the Iowa Department of Transportation's Public Hearing for the proposed four-lane U.S. 30 bypass of Mount Vernon and Lisbon in Linn and Cedar Counties.

The Iowa Department of Transportation is conducting this Public Hearing to explain the purpose and need for the proposed project and to present the preferred alternative for the four-lane expansion. It also allows you, the public, to ask any questions you may have and to express your opinions regarding the proposed improvement. Consideration will be given to all suggestions.

This hearing satisfies the public involvement required by federal and state regulations and helps ensure social, economic and environmental effects are identified. In addition, this project, as are all Iowa DOT projects, will be constructed in compliance with Title VI of the Civil Rights act of 1964.

This public hearing is used to present factual information about the proposed project and to receive comments from the public. Information received is then considered in developing a highway improvement which will best serve the public.

PUBLIC HEARING FORMAT

This public hearing will be conducted utilizing a combined open forum and formal format. The hearing will begin with an open forum session during which interested individuals are encouraged to express their views and ask questions in an informal setting. A formal presentation, followed by a question and answer session, will follow the open forum session. Oral and written statements will be accepted during both the open forum and the formal sessions.

This is your opportunity to express views either as an individual or a group representative. We encourage you to express your views concerning the proposal in one or more of these ways:

1. Individual discussion with Iowa DOT staff;
2. Presentation of oral and written statements at the hearing.
3. Submission of written statements following the hearing. Written statements and exhibits may be mailed to Catherine Cutler, District 6 Planner, Iowa DOT, 430th 16th Avenue SW, Cedar Rapids, IA 52404, or submitted online via the public meetings website at www.iowadot.gov/pim. Those received by November 12, 2012, will become a part of the public hearing transcript. All correspondence received after this date will be included in the project file and reviewed as the project is developed.

Hearing transcripts are provided to Iowa DOT staff, the Transportation Commissioners and the Federal Highway Administration (FHWA) for review before project plans are completed. A copy will be forwarded to you if you send a written request to Office of Location and Environment, Iowa DOT, 800 Lincoln Way, Ames, Iowa, 50010.

PROJECT BACKGROUND

A U.S. 30 Planning Study first began in the 1980s. A bypass alternative was approved by the Transportation Commission, however; due to lack of funding, construction of the bypass was deferred. In 2001 the project was removed from the DOT's Transportation Improvement Program. The DOT began review of this area of U.S. 30 again in 2009. A Corridor Preservation Zone was enacted in July 2009 to help protect a potential highway corridor. The U.S. 30 bypass has been included in the 2013-2017 Transportation Improvement Program.

PRESENT FACILITY

U.S. 30 was constructed in its current location as a 24-foot wide paved roadway in 1953 followed by partial resurfacing in 1965 and again in 1985. Based on the current federal functional classification, U.S. 30 in Linn and Cedar counties is classified as a Principal Arterial, with Priority III access control. U.S. 30 has been upgraded from a two-lane highway to a four-lane expressway from approximately 2.0 miles west of the U.S. 30/U.S. 151/Iowa 13 interchange to approximately 1.2 miles west of Mount Vernon.

PROJECT DESCRIPTION

The purpose of the proposed project is to provide a safe, free-flowing east-west route for the efficient transportation of people, goods, and services while maintaining access to the communities. The need for the proposed action includes:

- Improve capacity of U.S. 30
- Improve local access and safety
- Improve roadway conditions

The Build Alternative would provide for the construction of a four-lane access controlled facility with diamond interchanges at Iowa 1 and a relocated Adams Avenue. At the west end of the project, Wilcox Road would be the last at-grade intersection with full movements. The Irish Lane intersection would be a partial intersection, with a right-in, right-out, and left-in movements. At the east end of the project, Charles Avenue would be the first at-grade intersection, allowing full movement.

The No-Build Alternative would be the continuation of the highway system as it exists. It would not address the safety needs, increasing traffic volumes and outdated geometrics of the roadway within the project corridor. This alternative would not satisfy the Project Purpose and Need requirements. However, it is carried forward to serve as a baseline for comparison with the Build Alternative.

ENVIRONMENTAL CONSIDERATIONS

An Environmental Assessment (EA) for the proposed improvement was approved for public availability on September 24, 2012. This EA concludes the proposed project is necessary for safe and efficient travel within the project corridor. The project will have no significant social, economic or environmental impacts of a level that would warrant an environmental impact statement. Final alternative selection will occur following completion of a public review period and this Public Hearing. A review deadline of November 12, 2012, has been established for receipt of comments on this document. Comments on the EA should be submitted to Jim Rost, Director, Office of Location and Environment, Iowa Department of Transportation, 800 Lincoln Way, Ames, IA 50010. Unless significant impacts are identified as a result of public review or the Public Hearing, a Finding of No Significant Impact (FONSI) will be prepared.

This project will continue to be monitored by the Iowa DOT and FHWA throughout all development stages and construction to ensure all possible environmental effects are identified.

PROJECT SCHEDULE AND COSTS

The U.S. 30 Mount Vernon and Lisbon bypass has been included in the 2013-2017 Iowa Transportation Improvement Program. Currently, \$50,200,000 has been programmed through

fiscal year 2017. An additional 3-4 years and approximately \$80,000,000 will be needed to complete the project.

2013-2017 Iowa Highway Program

Activity	2014	2015	2016	2017
Right of Way	\$6,200,000	\$6,200,000	\$6,600,000	
Grade				\$30,050,000
Wetland Mitigation				\$1,150,000

RIGHT OF WAY

As part of the proposed improvement, additional right-of-way will be required. The following paragraphs provide information regarding the right-of-way process followed by the Iowa DOT. Please keep in mind specific right-of-way needs have not been identified at this time.

The Iowa DOT's policy provides for appraisal of property and/or property rights needed for each project. These appraisals use professional techniques and methods to determine "just compensation" in accordance with Federal and State constitutions, laws and regulations. The appraisals are prepared to assure fair treatment for both the property owner and the public.

After the appraisals are completed, each owner is contacted by a right of way agent for the purpose of explaining the plans and appraisals and for contracting the required right of way. In instances where an agreement cannot be reached through negotiations, the property may be acquired by the laws of eminent domain.

RELOCATION ASSISTANCE

The State of Iowa's acquisition and relocation program will be conducted in accordance with the Uniform Relocation Assistance and Real Property Acquisition Policies Act of 1970 (Public Law 91-646), as amended by the Surface Transportation and Uniform Relocation Assistance Act of 1987 and provides relocation resources to all residential and business relocatees without discrimination.

If you are required to move as a result of a highway project, whether an owner or tenant, you will be eligible for relocation assistance advisory services. You may be eligible for moving assistance, supplemental replacement housing payments, and reimbursement for certain expenses incurred in purchasing replacement housing.

It is the intent of the State of Iowa to ensure displaced individuals receive fair and equitable treatment and do not suffer disproportionately from highway programs designed for the whole public. Any person, family, business, or farm displaced by a highway project shall be offered

relocation assistance services for locating suitable replacement property. Relocation payments and advisory assistance are offered in addition to the State's purchase of your property.

Questions or problems concerning relocation assistance should be directed to the Office of Right of Way, Relocation Assistance Section, Iowa DOT, 800 Lincoln Way, Ames, Iowa, 50010.

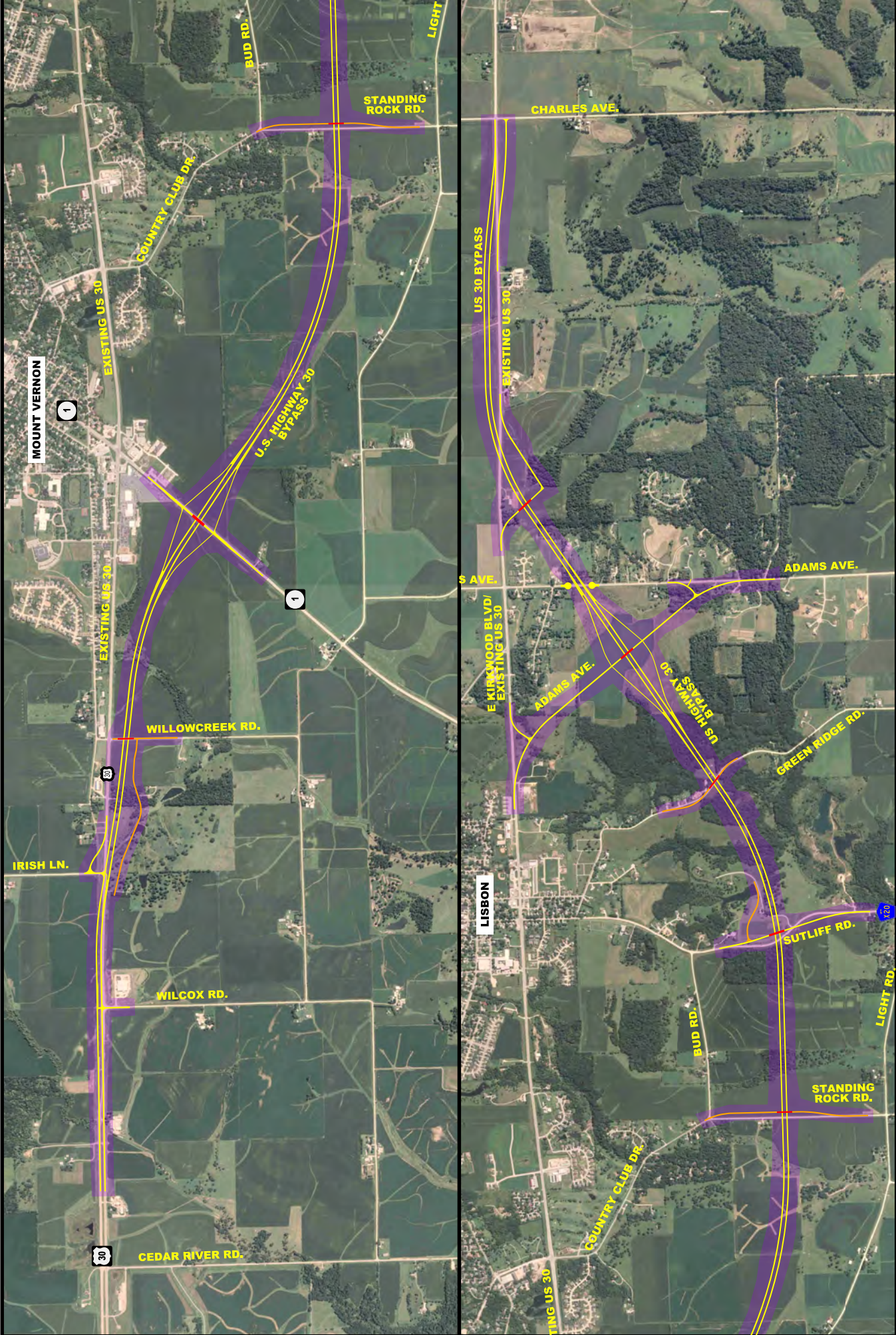
PUBLIC PARTICIPATION

If you have any comments on the proposed project, please make your comments known at this meeting or forward them on the attached self-addressed Citizen Comment form. A comment form is also available online at <http://www.iowadot.gov/pim>. If you have any questions about the project or the information presented today, please contact the following:

Catherine Cutler, District 6 Planner
Iowa Department of Transportation
430th 16th Avenue SW
Cedar Rapids, IA 52404
Phone: (800) 866-4368 or (319) 364-0235
E-mail: catherine.cutler@dot.iowa.gov

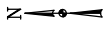
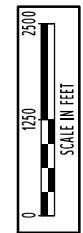
Thank you for your participation in this hearing.

Federal and state laws prohibit employment and/or public accommodation discrimination on the basis of age, color, creed, disability, gender identity, national origin, pregnancy, race, religion, sex, sexual orientation or veteran's status. If you believe you have been discriminated against, please contact the Iowa Civil Rights Commission at 800-457-4416 or Iowa Department of Transportation's affirmative action officer. If you need accommodations because of a disability to access the Iowa Department of Transportation's services, contact the agency's affirmative action officer at 800-262-0003.



LEGEND

- PROPOSED PAVEMENT
- PROPOSED GRANULAR
- PROPOSED BRIDGE



PRELIMINARY PLAN
NOT FINAL - SUBJECT TO CHANGE

PUBLIC HEARING October 30, 2012
US 30 in Linn and Cedar Counties at Mount Vernon and Lisbon
Project NHS-030-7(076)--19-57



Citizen Comments

NHS-30-7(76)--19-57

**I (do ☐ do not ☐)
desire a response.**

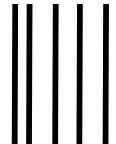
The information which you give may be printed and/or distributed. You are not required to provide any information, unless you request a response to your comments.

E-mail: _____

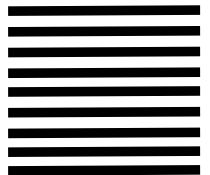
Fold

(TAPE - Do NOT Staple)

(TAPE-Do NOT Staple)



NO POSTAGE
NECESSARY
IF MAILED
IN THE
UNITED STATES



BUSINESS REPLY MAIL

FIRST-CLASS MAIL PERMIT NO. 651 AMES, IA

POSTAGE WILL BE PAID BY ADDRESSEE

PUBLIC INVOLVEMENT SECTION
OFFICE OF LOCATION AND ENVIRONMENT
IOWA DEPARTMENT OF TRANSPORTATION
800 LINCOLN WAY
AMES IA 50010-9902

