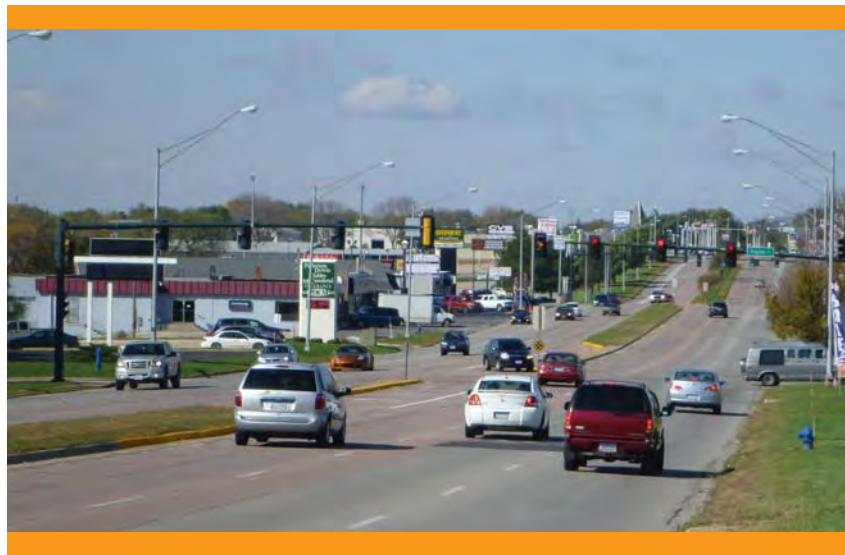


Purpose and Need

The purpose of this project is to upgrade and modernize University Avenue / IA 934 between Iowa Highway 58 in Cedar Falls and U.S. Highway 63 in Waterloo within Black Hawk County, Iowa.



The Proposed Project is Needed to:

- Improve pavement and bridge condition
- Enhance safety
- Provide bicycle and pedestrian access and mobility
- Improve traffic flow
- Support economic growth and revitalization

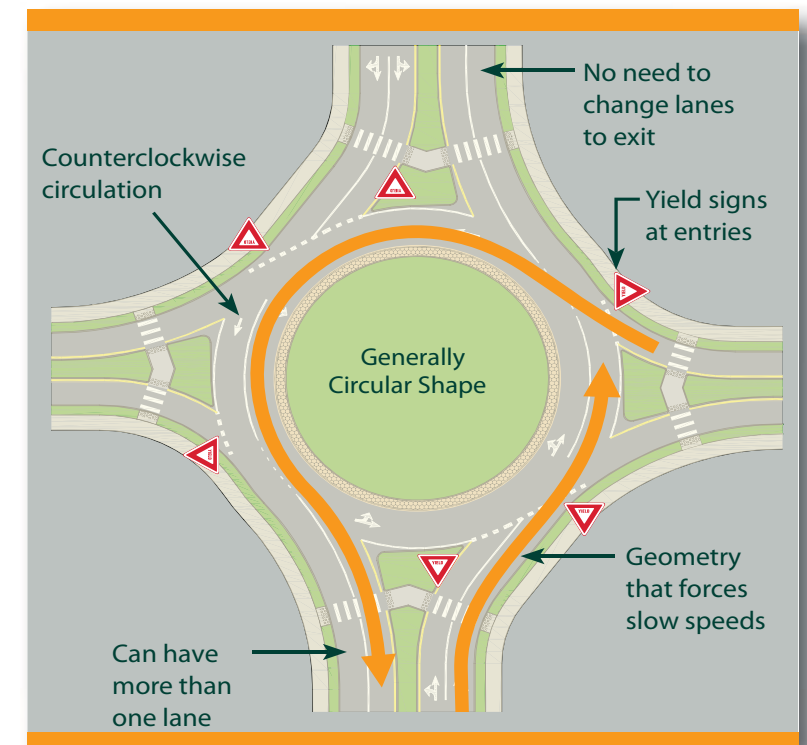


What Is a Roundabout?

A Roundabout is a circular intersection designed for uniform, low-speed flow in one direction with yield control for entering traffic.

What are the benefits compared to stop-controlled and signalized intersections?

- Operates more efficiently due to free flow travel conditions
- Lower speeds and shorter crossing distances are simpler and safer for pedestrians
- Reduces overall crashes by eliminating angle crashes and lowering speeds
- More environmentally friendly because there is less stop-and-go traffic and no electricity needed for traffic signals
- Provides opportunity to incorporate aesthetic treatments, such as landscaping or public art



What is Traffic Signal Optimization?

Traffic signal optimization includes installing new, modern traffic signal equipment and coordinating the traffic signals to improve traffic flow. Through traffic on a main roadway can travel through multiple, coordinated signals without having to stop.



What are the benefits of optimizing a traffic signal?

- Reduces congestion by increasing intersection capacity and smoothing traffic flow
- Reduces vehicle emissions and improves safety by reducing congested, stop-and-go travel conditions and promoting uniform speed
- Reduces delay and travel time along a corridor



Complete Streets

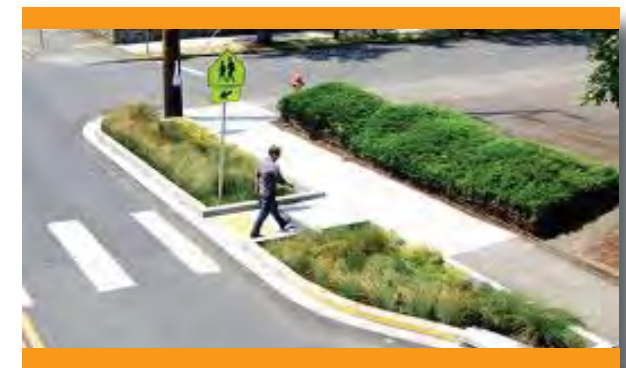
What are *Complete Streets*?

Complete Streets are planned, designed and operated to enable safe access for all users. Motorists, truck drivers, bicyclists, pedestrians and bus riders of all ages and abilities are able to safely move along and across a *Complete Street*.

What does a *Complete Street* look like?

A *Complete Street* may include:

- Sidewalks or multi-use trails
- Bike lanes or wide paved shoulders
- Bus turn-outs
- Comfortable and accessible public transportation stops



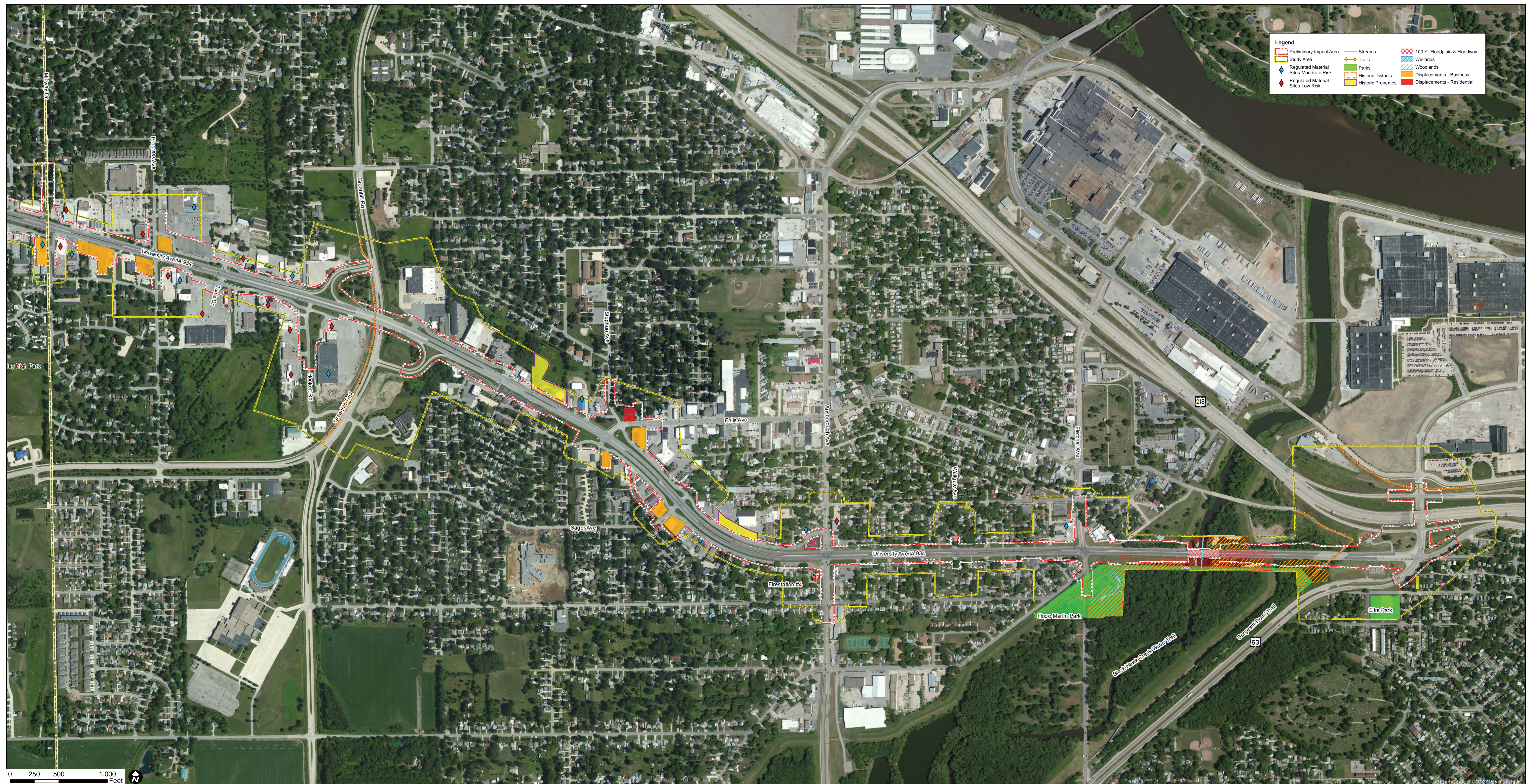
- Frequent and safe crossing opportunities
- Median islands
- Accessible pedestrian signals
- Narrower travel lanes
- Aesthetic treatments and landscaping
- Roundabouts



Environmental Constraints - Cedar Falls



Environmental Constraints - Waterloo



Potential Section 4(f) *de minimis* Impacts

