

# Purpose and Need

## Purpose of Project:

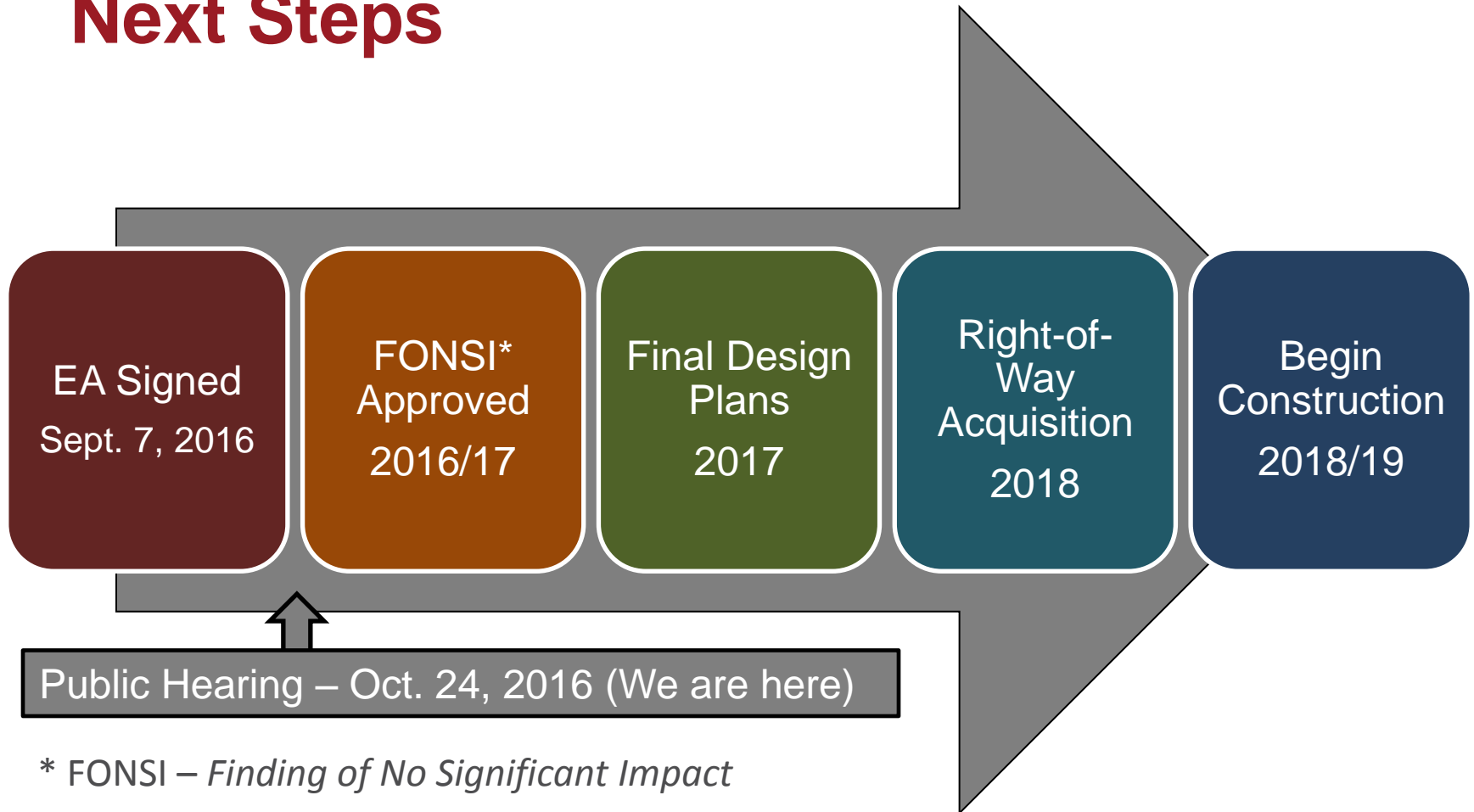
- Improve safety and increase traffic capacity
- Evaluate new Interstate System access between the Douglas Ave and NW 86<sup>th</sup> Street Interchanges

## Need for Action:

- Back ups during peak traffic hours
- Northbound exit loop ramp over capacity
- Crashes are above statewide average



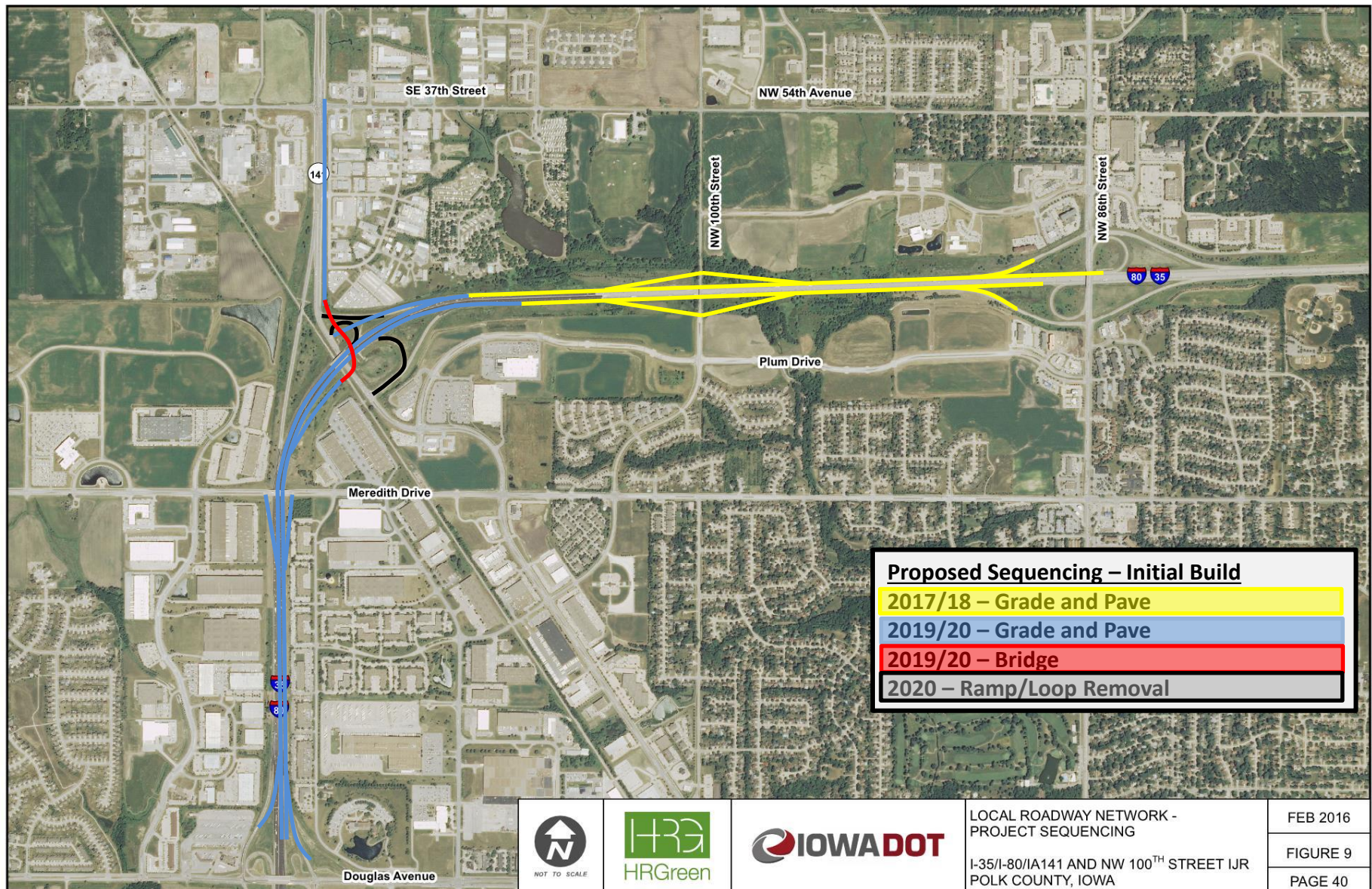
# Next Steps



\* FONSI – *Finding of No Significant Impact*



# Project Sequencing for the Initial Build of the Preferred Alternative





# Project Sequencing for the Final Build of the Preferred Alternative

