



# PUBLIC HEARING I-35/ I-80/ IOWA 141 INTERCHANGE STUDY

Interchange Justification Report and  
Environmental Assessment

Polk County, Iowa IM-80-3(178)127--13-77

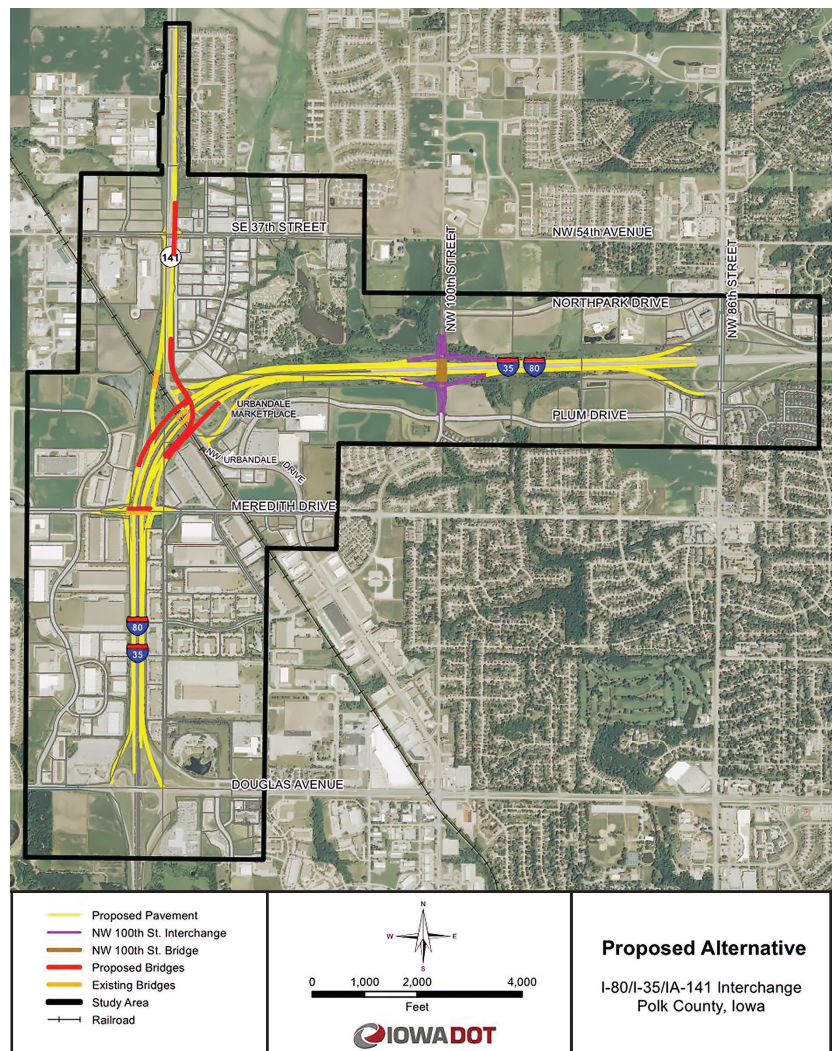
MEETING DATE: OCTOBER 24, 2016

## Project Description

The Iowa Department of Transportation (DOT) in partnership with the cities of Urbandale, Grimes, and Johnston are proposing to construct improvements in the I-35/ I-80/ Iowa 141 Interchange Corridor. The proposed improvements include the construction or replacement of Interstate System entrance and exit ramps, bridges, auxiliary lanes, and collector-distributor roadways.

An Interchange Justification Report was completed for this project in June 2016. An Environmental Assessment was completed for this project and signed by the Federal Highway Administration on September 7, 2016.

## PREFERRED ALTERNATIVE



## PURPOSE AND NEED

### Purpose of Project:

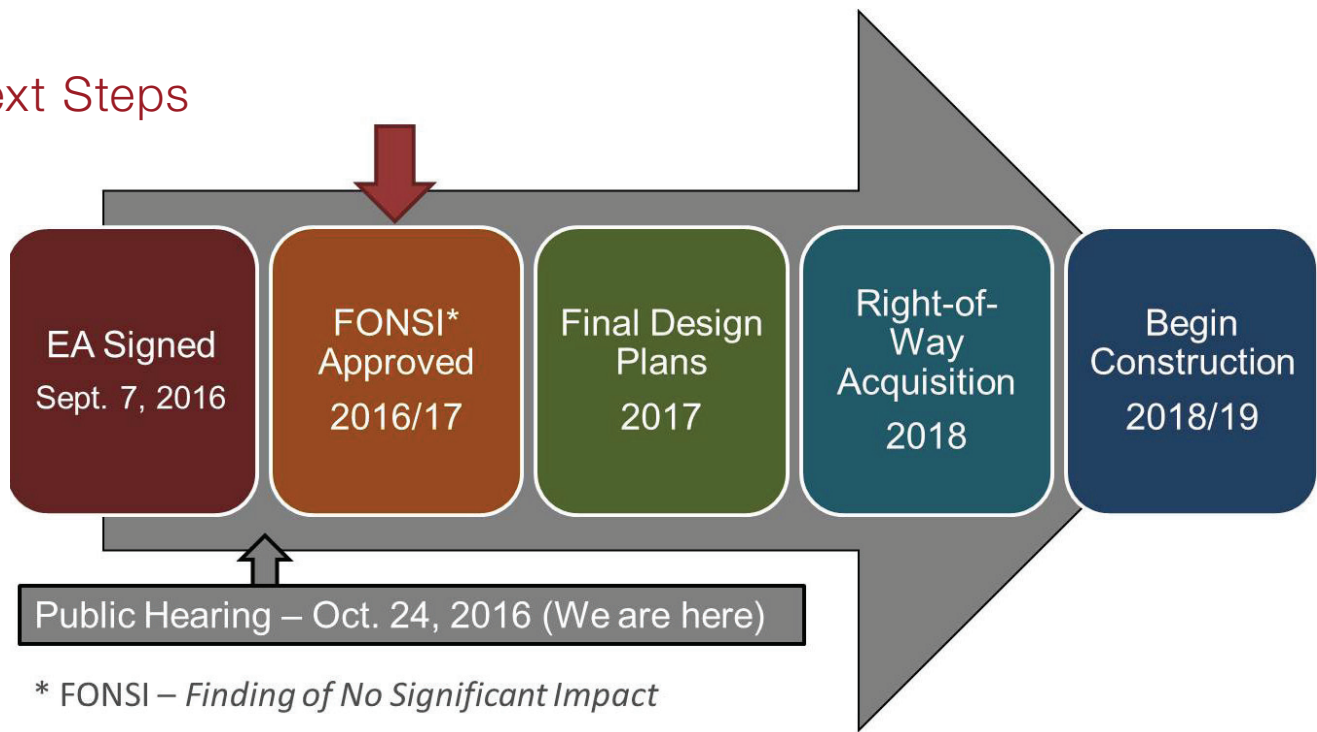
- Improve safety and increase traffic capacity
- Evaluate new Interstate System access between Douglas Ave and NW 100th St Interchanges

### Need for Action:

- Back ups during peak traffic hours
- Northbound exit loop ramp over capacity
- Crashes above the statewide average



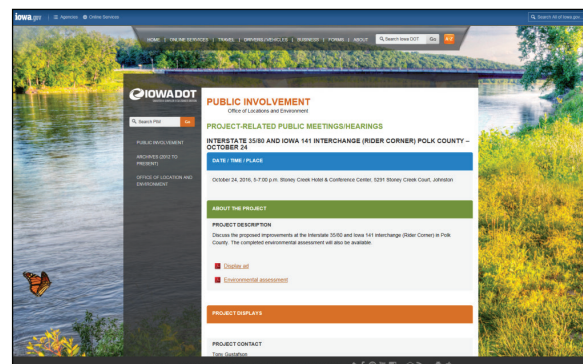
## Next Steps



## Project Costs

The preferred alternative is estimated to cost approximately \$100 million based on 2018 construction costs. Of the \$100 million dollars, \$44.2 million dollars are included in the Iowa DOT's five-year program to be spent between 2018-2021.

Year	Activity	Programmed Amount
2018	Right of Way	\$0.6 M
2019	Grading, Bridge	\$19.5 M
2020	Grading, Paving, Signals, Lighting	\$23.8 M
2021	Erosion Control	\$0.3 M
<b>Total</b>		<b>\$44.2 M</b>



## Public Comments

### Visit

<http://bit.ly/iowadot6611021>

### Due Date

November 7, 2016

## For More Information

### Visit



<http://tinyurl.com/HRGreenIADOT>

### Contact Scott Dockstader

Iowa DOT - District 1 Office  
1020 S. 4th St., Ames, IA 50010  
(515) 239-1194  
[scott.dockstader@dot.iowa.gov](mailto:scott.dockstader@dot.iowa.gov)