

Interstate 35/80 Intersection with Iowa 141

Thank you for attending this public meeting regarding the future interchange modifications to the I-35/I-80/Iowa 141 interchange. The purpose of this meeting is to present several alternatives for review and comment.

Next Steps:

Gather public comments regarding the proposed interchange alternatives

Complete the Interchange Justification Report

Finish the environmental studies

Select an interchange alternative

Project Costs and Schedule

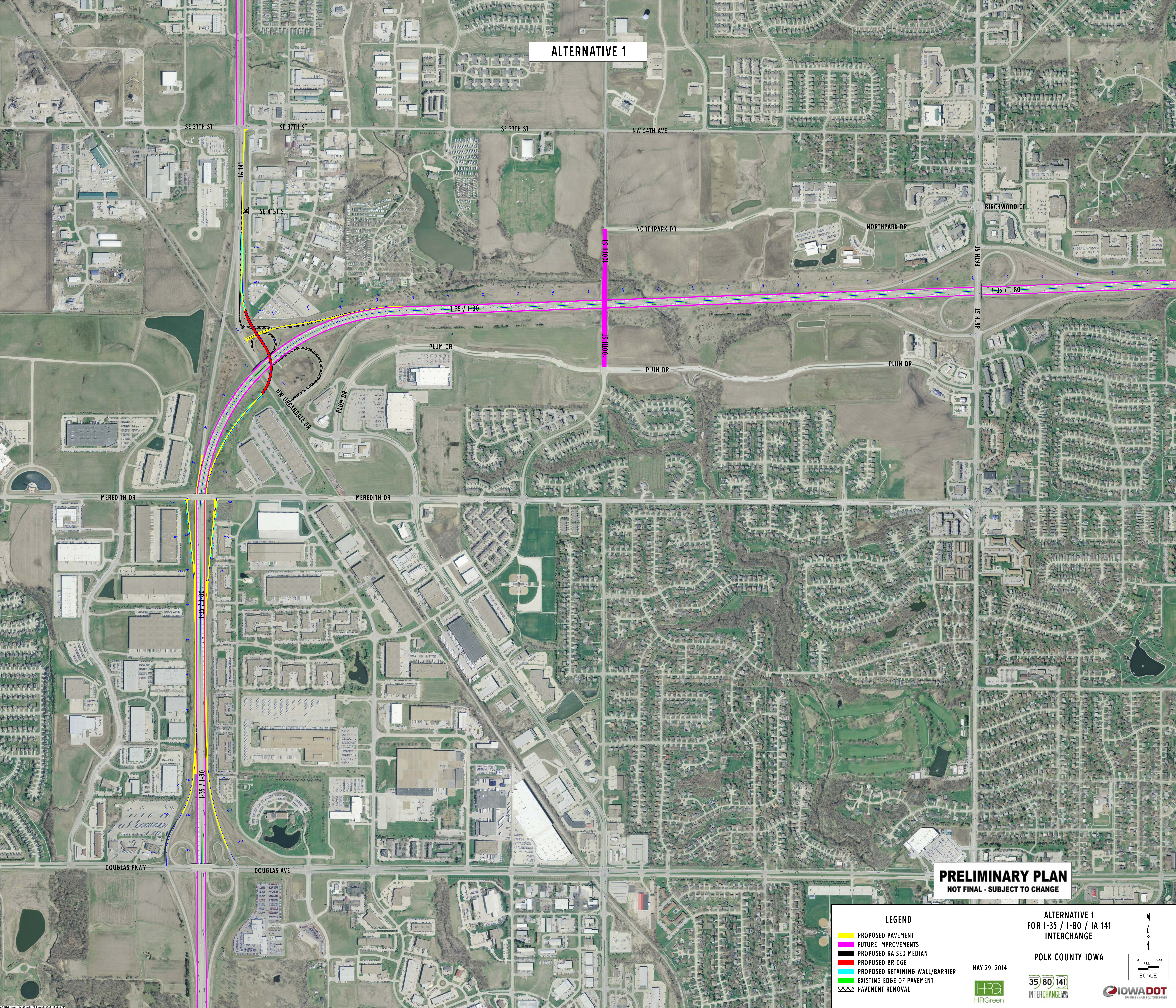
This project is currently included in the *Draft* 2015-2019 Iowa Transportation Improvement Program with \$18 million in 2019 for grading and paving.

More information, concerning this project, will be posted as it becomes available at the Iowa DOT's website <http://www.news.iowadot.gov/pim/>.

If you have any comments or concerns regarding the projects presented today or would like to be added to the project mailing list, please contact the following:

Tony Gustafson P.E., Assistant District 1 Engineer
Iowa Department of Transportation
1020 S. Fourth Street Ames, IA 50010
Phone: (515) 239-1635 or (800) 899-0623
Fax: (515) 239-1472
E-mail: Tony.Gustafson@dot.iowa.gov

ALTERNATIVE 1



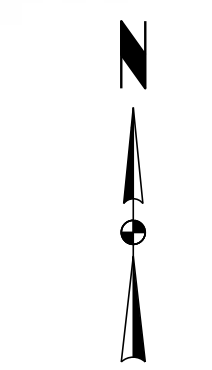
PRELIMINARY PLAN
NOT FINAL - SUBJECT TO CHANGE

- LEGEND
- PROPOSED PAVEMENT
 - FUTURE IMPROVEMENTS
 - PROPOSED RAISED MEDIAN
 - PROPOSED BRIDGE
 - PROPOSED RETAINING WALL/BARRIER
 - EXISTING EDGE OF PAVEMENT
 - PAVEMENT REMOVAL

ALTERNATIVE 1
FOR I-35 / I-80 / IA 141
INTERCHANGE

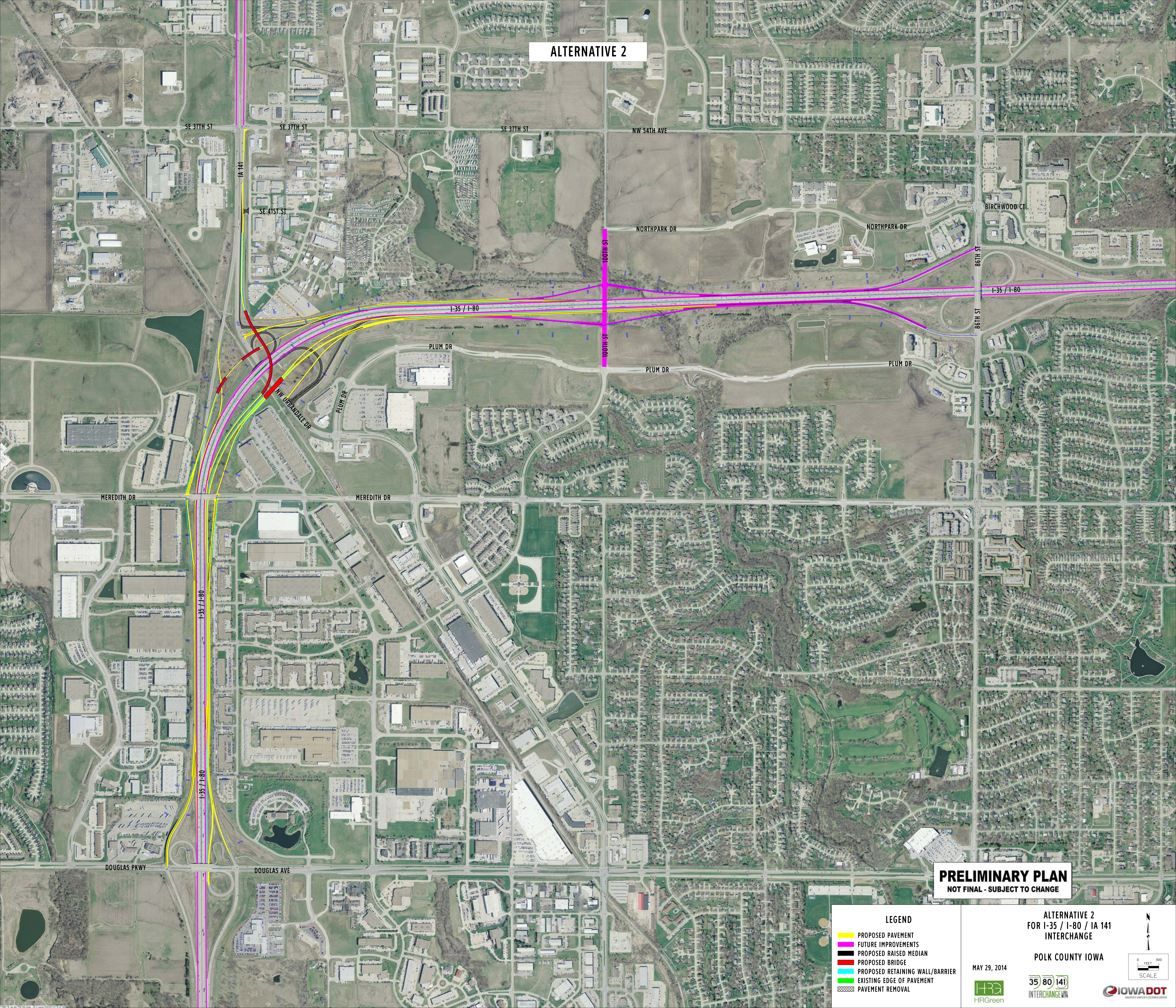
POLK COUNTY IOWA

MAY 29, 2014



0 100 200
FEET
SCALE

ALTERNATIVE 2



PRELIMINARY PLAN
NOT FINAL - SUBJECT TO CHANGE

- LEGEND**
- PROPOSED PAVEMENT
 - FUTURE IMPROVEMENTS
 - PROPOSED RAISED MEDIAN
 - PROPOSED BRIDGE
 - PROPOSED RETAINING WALL/BARRIER
 - EXISTING EDGE OF PAVEMENT
 - PAVEMENT REMOVAL

ALTERNATIVE 2
FOR I-35 / I-80 / IA 141
INTERCHANGE

POLK COUNTY IOWA

MAY 29, 2014

HRGreen

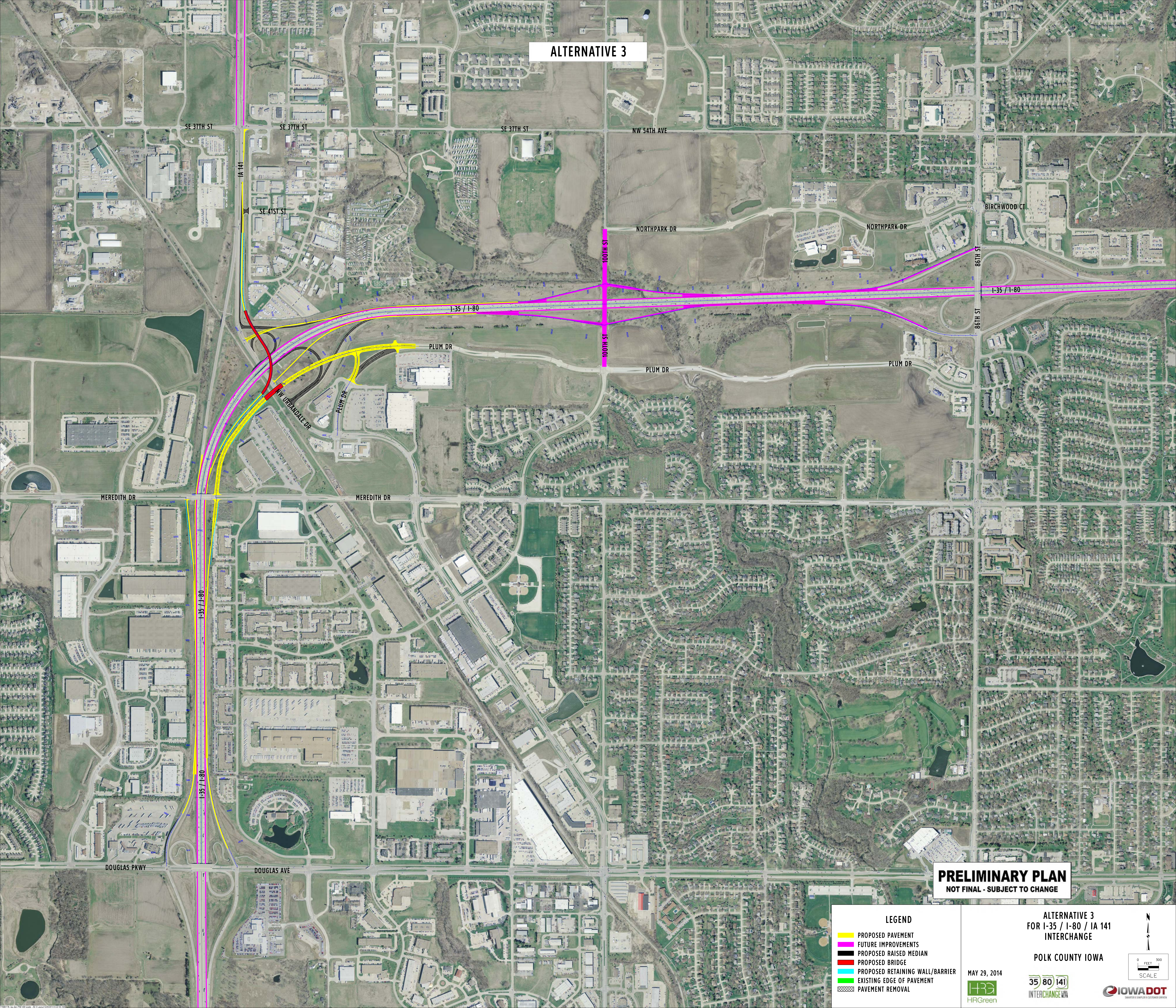
35 80 141
INTERCHANGE

IOWADOT
SMARTER & SAFER CUSTOMER DRIVEN

0 100 200
FEET
SCALE

N

ALTERNATIVE 3



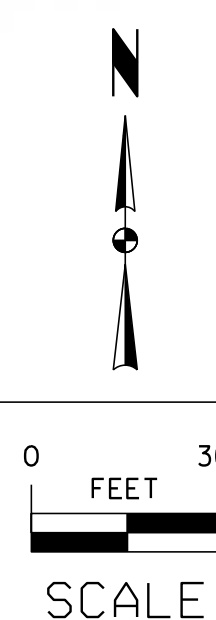
PRELIMINARY PLAN
NOT FINAL - SUBJECT TO CHANGE

- LEGEND**
- PROPOSED PAVEMENT
 - FUTURE IMPROVEMENTS
 - PROPOSED RAISED MEDIAN
 - PROPOSED BRIDGE
 - PROPOSED RETAINING WALL/BARRIER
 - EXISTING EDGE OF PAVEMENT
 - PAVEMENT REMOVAL

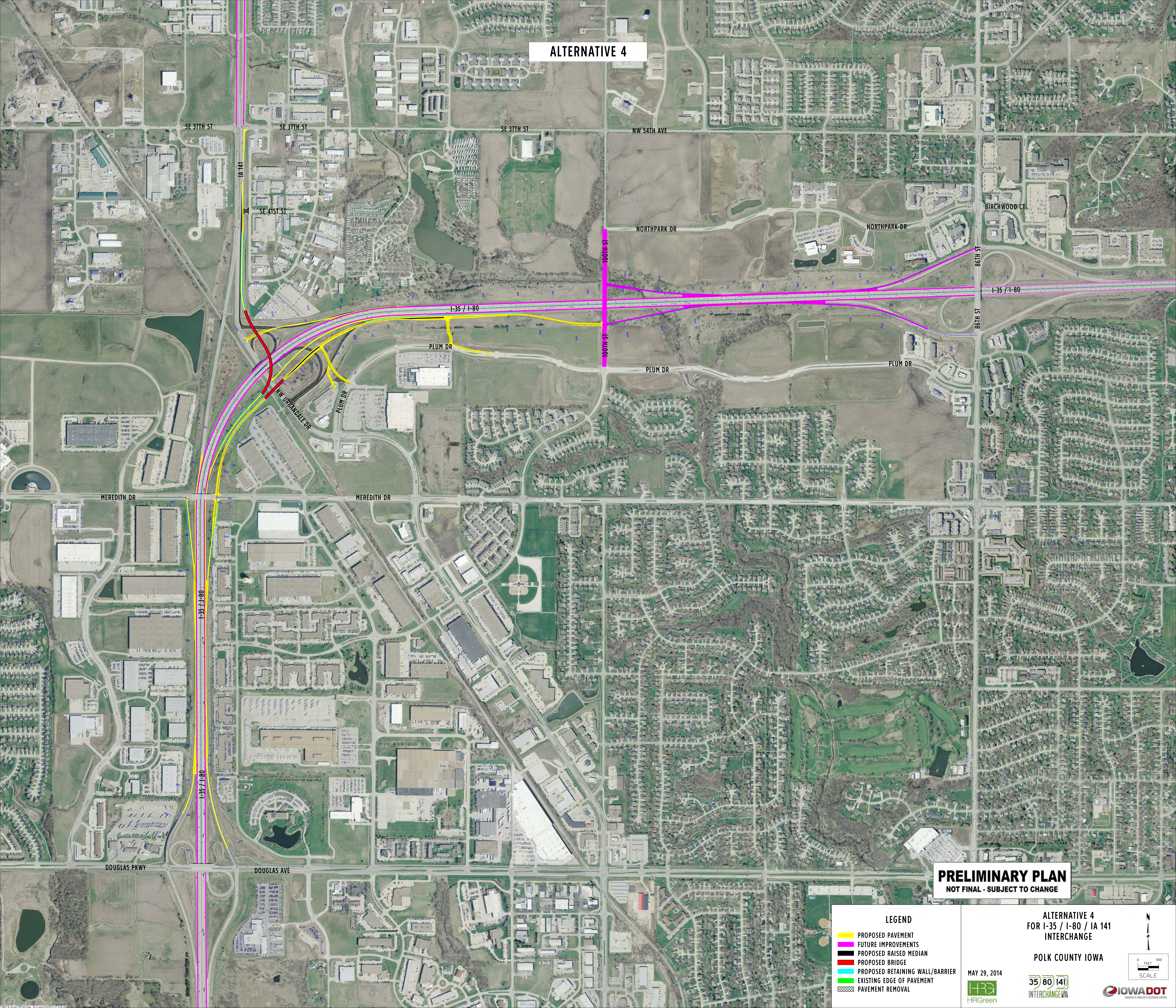
ALTERNATIVE 3
FOR I-35 / I-80 / IA 141
INTERCHANGE

POLK COUNTY IOWA

MAY 29, 2014



ALTERNATIVE 4



PRELIMINARY PLAN
NOT FINAL - SUBJECT TO CHANGE

- LEGEND**
- PROPOSED PAVEMENT
 - FUTURE IMPROVEMENTS
 - PROPOSED RAISED MEDIAN
 - PROPOSED BRIDGE
 - PROPOSED RETAINING WALL/BARRIER
 - EXISTING EDGE OF PAVEMENT
 - PAVEMENT REMOVAL

ALTERNATIVE 4
FOR I-35 / I-80 / IA 141
INTERCHANGE

POLK COUNTY IOWA

MAY 29, 2014

