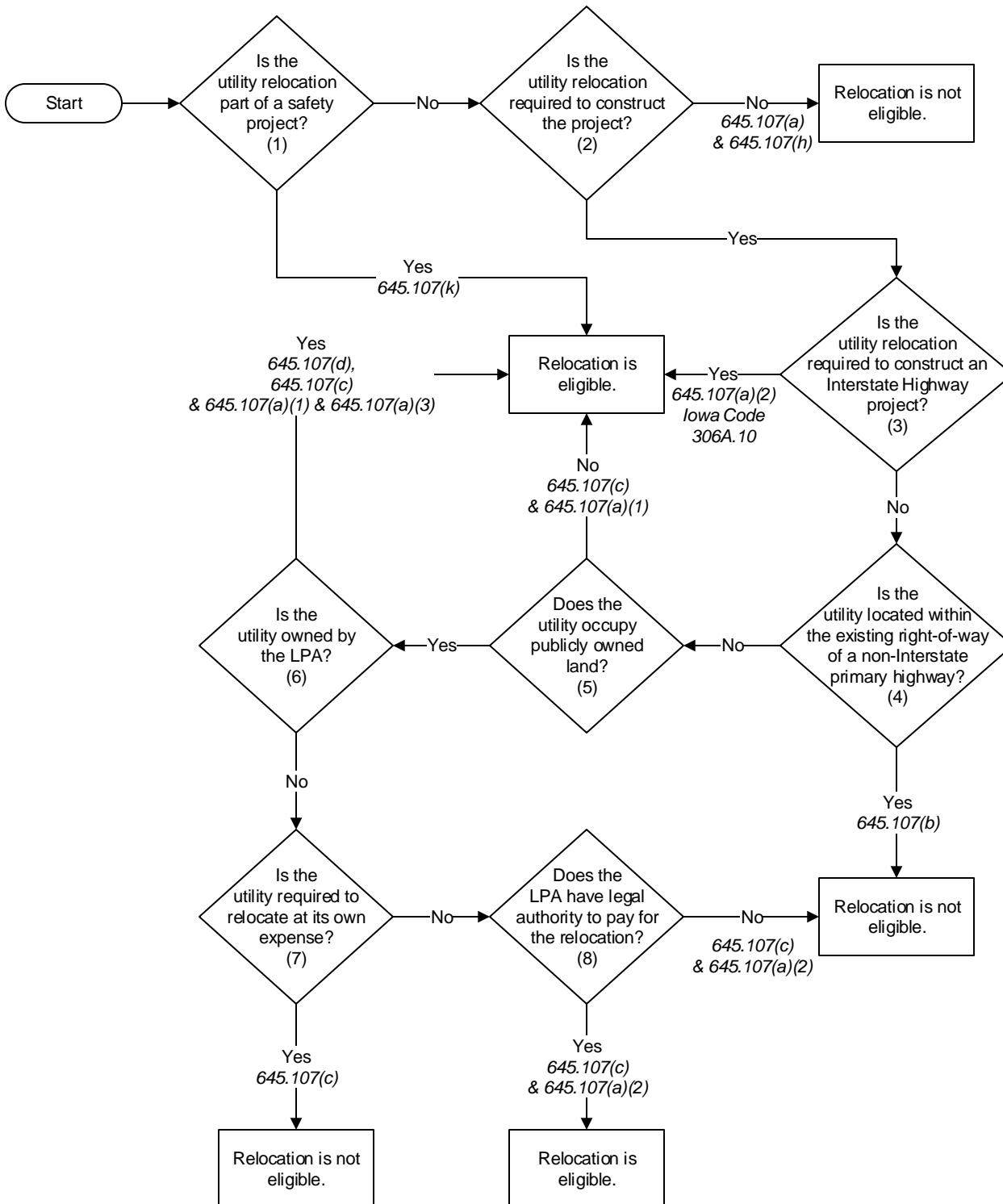


Utility Relocation Federal-Aid Eligibility Flowchart

For Local Public Agency (LPA) Federal-aid Projects



Notes:

1) For additional explanation of each question shown on this flowchart, refer to the corresponding numbered questions in the "Eligible Relocations" section of this I.M.

2) For each eligibility determination shown on this flowchart, the supporting references from 23 CFR 645 and Iowa Code are shown in *italics*.