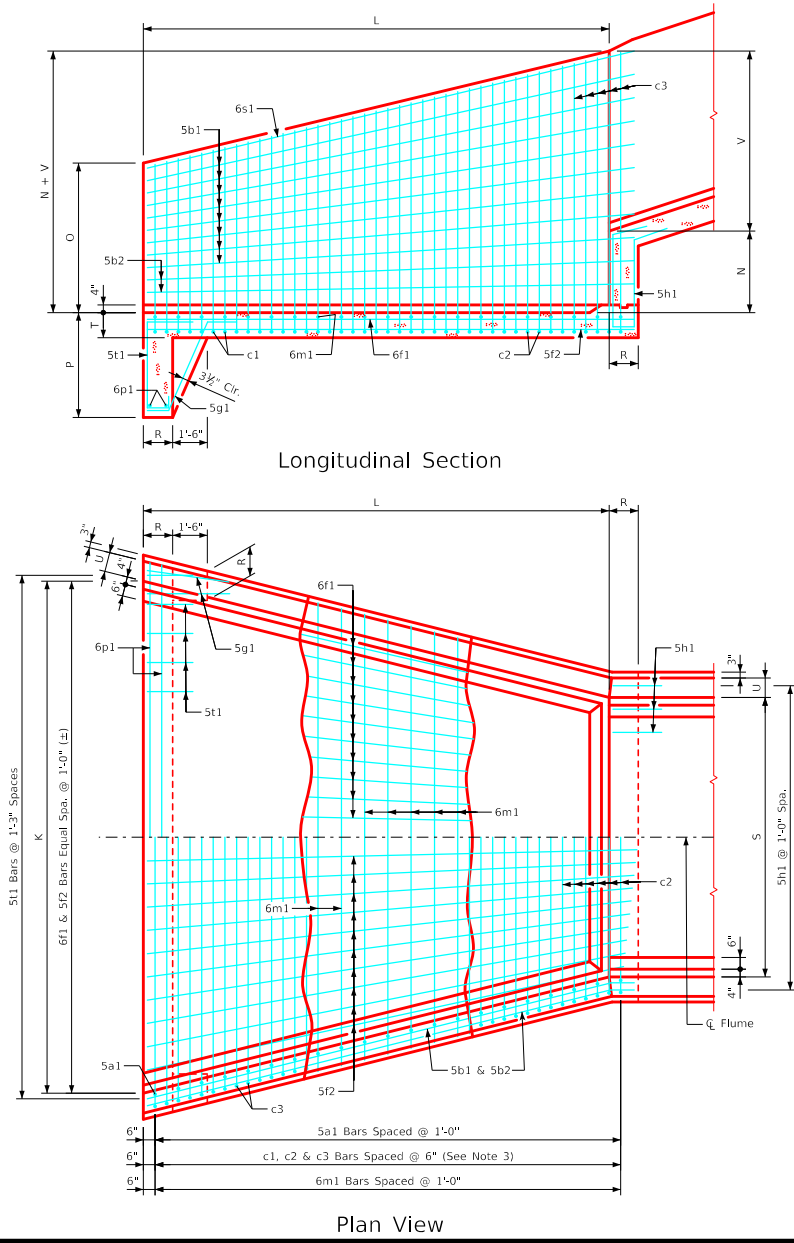
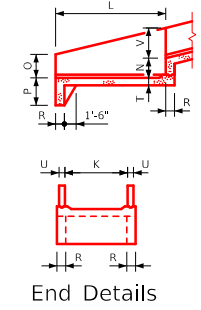


ENGLISHIGNEDFLUMES.DGN - RCFB 07-20 - THIS SHEET ISSUED 12-2020.

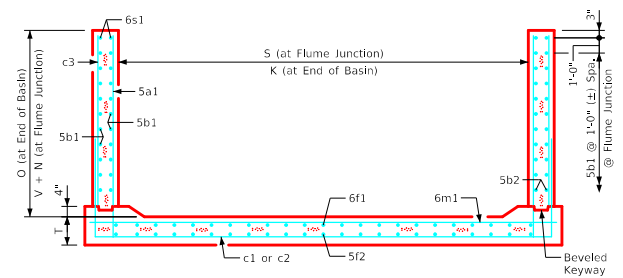


Longitudinal Section

Plan View



End Details



12'-0" x 10'-0" Flume Basin Example Shown

Flume Basin Notes:

1. See Sheet RCF 01-20 for general information.
2. c2 & c3 bars are lapped.
3. c1 bars are omitted if both "S" and "K" are equal to or larger than 8' and 9' respectively.
4. See Sheet RCFB 06-20 for flume basin quantities.

LATEST REVISION DATE	 APPROVED BY BRIDGE ENGINEER		
		Standard Design Single Reinforced Concrete Box Culverts December, 2020	
		Flume Basin Details 12'-0" Span	RCFB 07-20