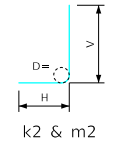


Variable Dimensions and Quantities for 12'-0" x 12'-4" Barrel Sections

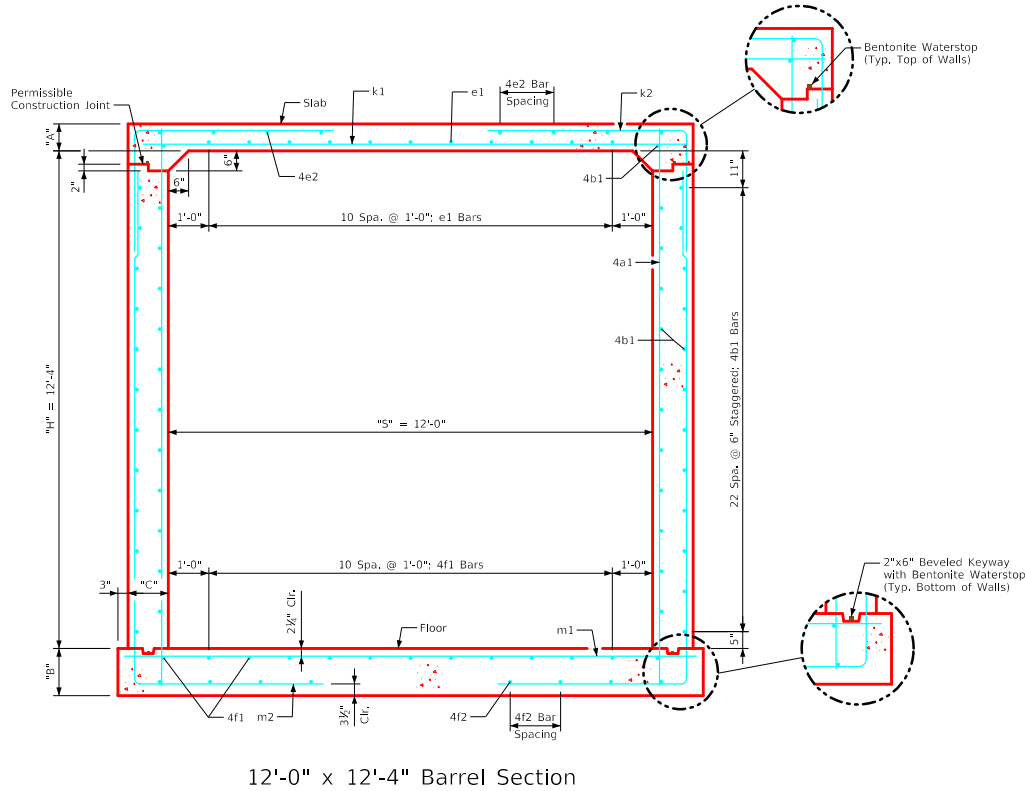
Dimensions													Bar List																		Quantities																		
Fill	S	H	A	B	C	D	a1		b1		e1		e2		f1		f2		k1		k2		k9		m1		m2		m9		Concrete (CY/FT)				Steel (LB/FT)														
0	1	2	3	4-6	7-9	10-12	13-15	Size	Sp.	L	Size	Sp.	No.	Size	Sp.	No.	Size	Sp.	No.	Size	Sp.	L	Size	Sp.	L	Size	Sp.	L	Size	Sp.	L	Size	Sp.	L	Slab	Floor	Walls	Total	(LB/FT)										
0	12'-0"	12'-4"	13.5	15	12	9	4	9	14'-3"	4	6	48	5	12	11	4	16	10	4	12	13	4	16	10	8	12	13'-8"	6	9	12'-1"	8'-1"	4'-0"	--	--	7	9	14'-2"	6	9	20'-9"	8'-1"	12'-7"	--	--	0.623	0.667	0.887	2.177	307.92
1	12'-0"	12'-4"	12.5	14.5	12	9	4	9	14'-1"	4	6	48	5	12	11	4	16	10	4	12	13	4	16	10	7	9	13'-8"	6	9	12'-0"	8'-1"	3'-11"	--	--	7	9	14'-2"	6	9	20'-8"	8'-1"	12'-7"	--	--	0.580	0.645	0.887	2.112	306.53
2	12'-0"	12'-4"	8.5	10.5	12	9	4	9	13'-5"	4	6	48	5	12	11	4	16	10	4	12	13	4	18	8	8	9	13'-8"	7	9	11'-5"	7'-5"	4'-0"	--	--	7	6	14'-2"	7	9	17'-7"	5'-4"	12'-3"	7	14'-2"	0.407	0.466	0.887	1.760	364.21
3	12'-0"	12'-4"	8	10.5	12	9	4	9	13'-5"	4	6	48	4	12	11	4	17	8	4	12	13	4	16	8	8	9	13'-8"	6	6	8'-10"	5'-3"	3'-7"	6	13'-8"	6	6	14'-2"	6	6	17'-1"	4'-10"	12'-3"	6	14'-2"	0.386	0.466	0.887	1.739	336.29
4-6	12'-0"	12'-4"	8	10.5	12	9	4	9	13'-5"	4	6	48	4	12	11	4	16	8	4	12	13	4	15	8	6	6	13'-8"	6	6	8'-5"	4'-10"	3'-7"	6	13'-8"	7	6	14'-2"	6	6	16'-11"	4'-8"	12'-3"	6	14'-2"	0.386	0.466	0.887	1.739	339.03
7-9	12'-0"	12'-4"	8.5	11	12	9	4	9	13'-6"	4	6	48	4	12	11	4	14	8	4	12	13	4	14	8	7	6	13'-8"	6	6	7'-11"	4'-4"	3'-7"	6	13'-8"	7	6	14'-2"	6	6	16'-8"	4'-4"	12'-4"	6	14'-2"	0.407	0.488	0.887	1.782	349.61
10-12	12'-0"	12'-4"	9.5	12.5	12	9	4	9	13'-8"	4	6	48	4	12	11	4	13	8	4	12	13	4	13	8	7	6	13'-8"	6	6	7'-10"	4'-2"	3'-8"	6	13'-8"	7	6	14'-2"	6	6	16'-8"	4'-3"	12'-5"	6	14'-2"	0.451	0.555	0.887	1.893	349.39
13-15	12'-0"	12'-4"	10.5	13	12	9	4	12	13'-10"	4	6	48	4	12	11	4	18	6	4	12	13	4	18	6	7	6	13'-8"	6	6	7'-8"	3'-10"	3'-10"	6	13'-8"	8	6	14'-2"	6	6	16'-4"	3'-10"	12'-6"	6	14'-2"	0.494	0.578	0.887	1.959	356.16

Bent Bar Details

Bars	D
6	4 1/2"
7	5 1/2"



Note:
All dimensions are out to out.
D = pin diameter.



12'-0" x 12'-4" Barrel Section

Notes:

1. Dimensions listed on this sheet to be used in conjunction with Sheet PT G2-20.
2. Horizontal legs for the k2 and m2 bars may lap in low fill situations.
3. Dimensions "A", "B", "C", "D", and "Sp." listed in the bar list are in inches.
4. Dimensions "S", "H", "L", and "V" listed in the bar list are in feet and inches.

LATEST REVISION DATE	APPROVED BY BRIDGE ENGINEER		
		Cast-in-Place Standard Design - Walkways and Trails Reinforced Concrete Pedestrian Tunnel August, 2020	
		Tunnel Details 12'-0" x 12'-4"	PT-RCB 12-12-20