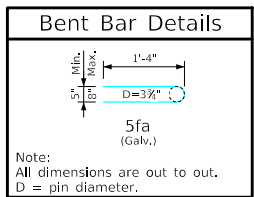
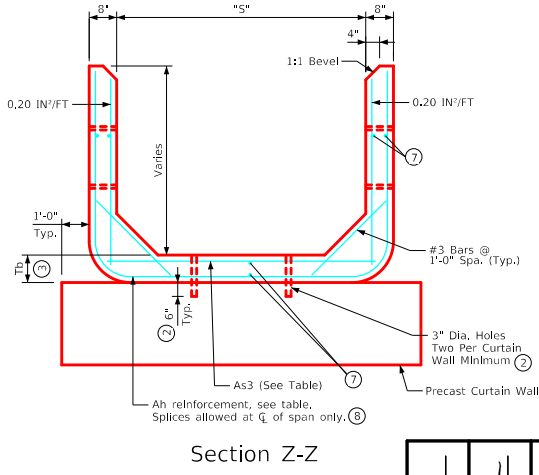
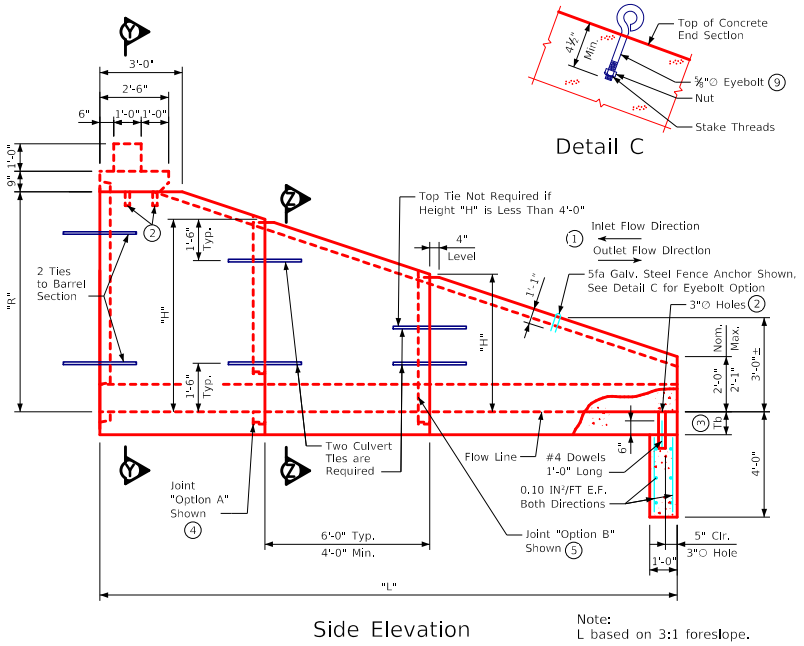
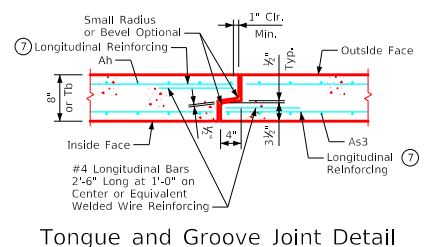
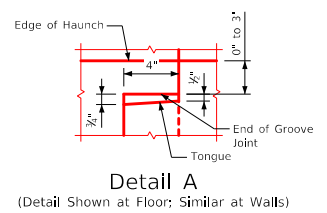
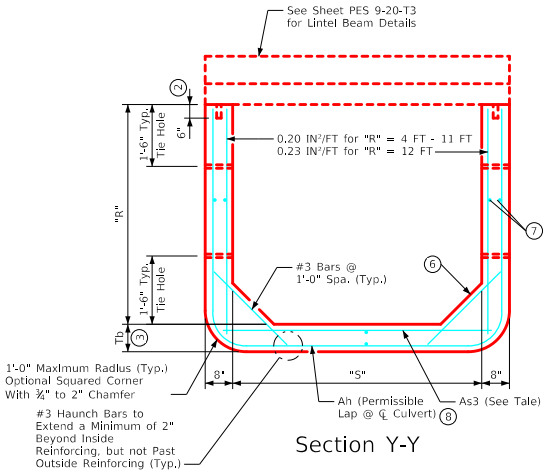
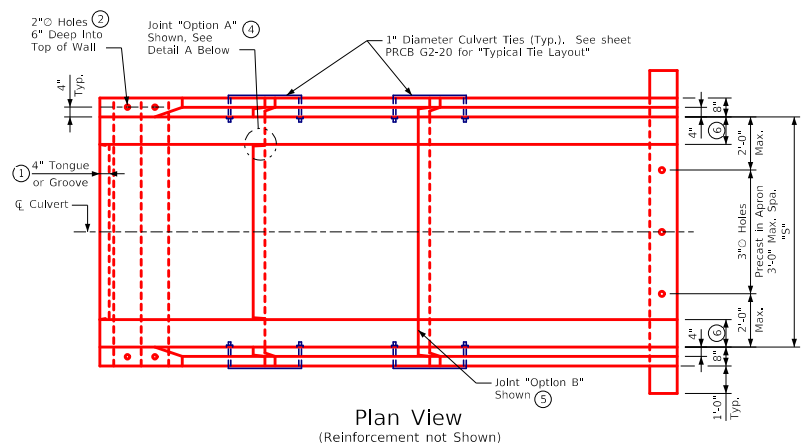


REVISED 10-2021: Updated lintel beam connection hole location in Plan View. ENGLISHIGNEDPRECASTCULVERTS.DGN - PES 1-20-T3 S1 - THIS SHEET ISSUED 12-2020.



Note: See sheet PES 2-20-T3 for additional information and notes used in conjunction with this sheet.

10-2021  
LATEST REVISION DATE  
APPROVED BY BRIDGE ENGINEER

<b>IOWA DOT</b>	
Standard Design <b>Single Precast Reinforced Concrete Box Culverts</b> December, 2020	
Type 3 End Section Details	PES 1-20-T3
For Skews up to 7.5°; 6' - 12' Spans	Sheet 1 of 2