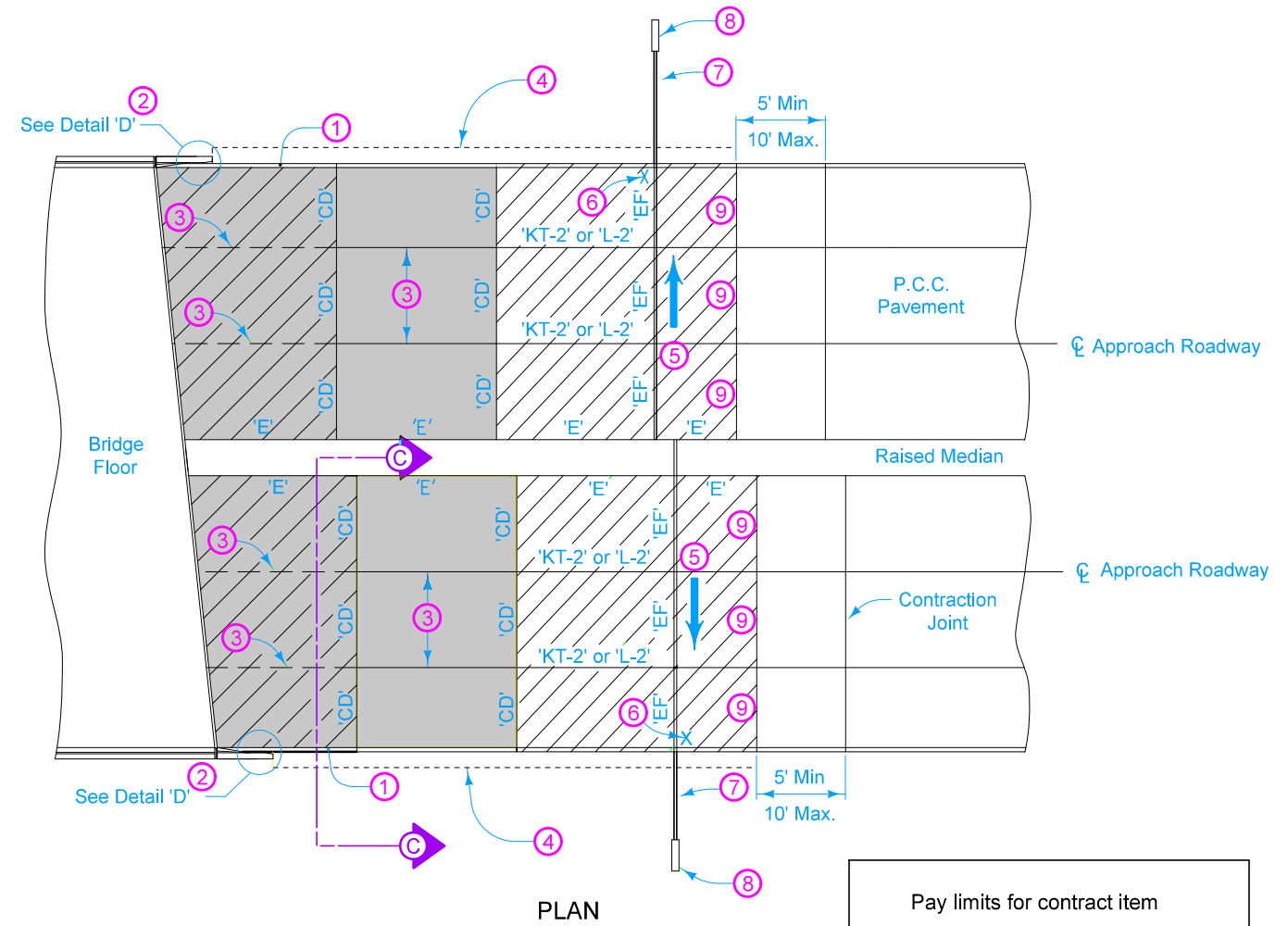
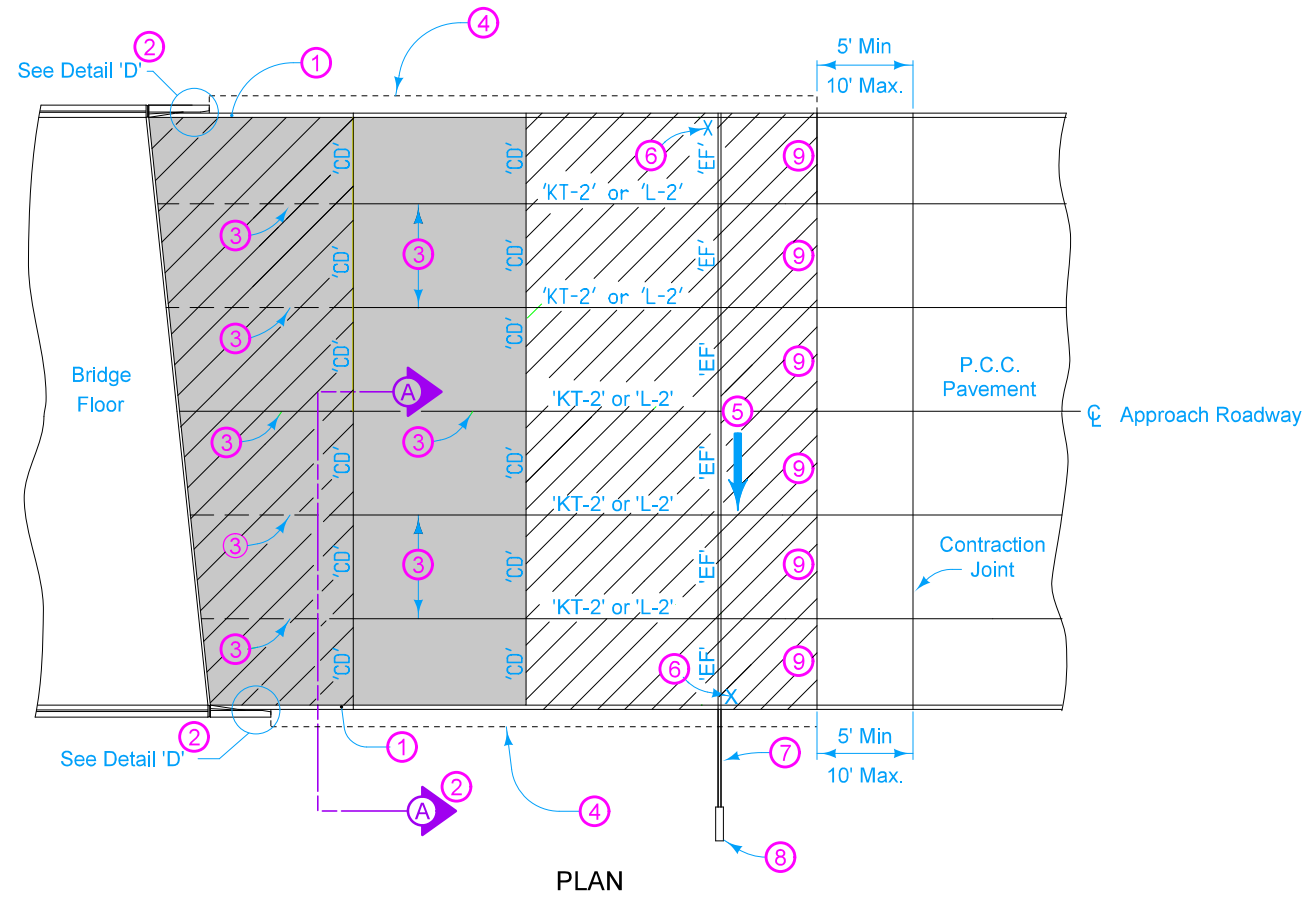
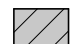

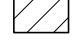


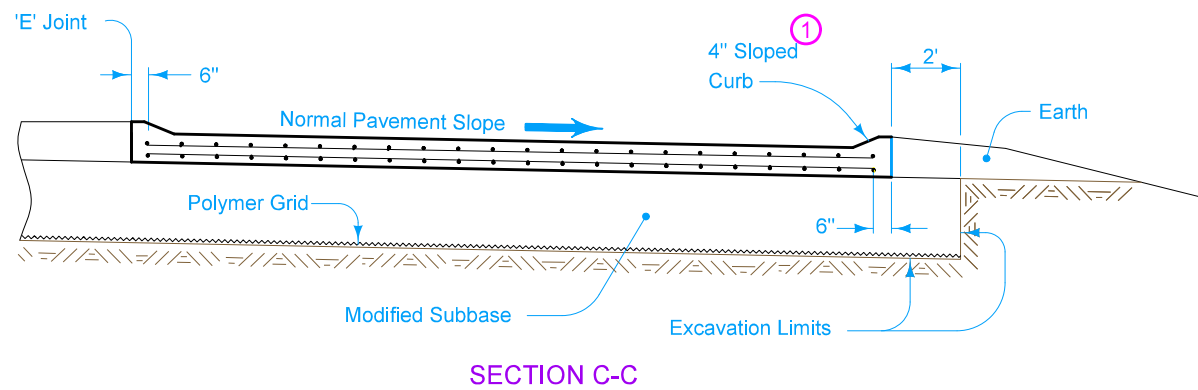
For joint details, see PV-101.





Pay limits for contract item include the following areas:

-  Double Reinforced Section
-  Single Reinforced Section
-  Non-Reinforced Section

- ① Build 4 inch Sloped Curb, unless noted otherwise in the plans. Refer to PV-102 for curb and runout details.
- ② See BR-201, BR-202, BR-203, or BR-204.
- ③ Longitudinal Joint (PV-101):
Single Pour - Saw cut joint per Detail B.
Two Pours - Use 'KS-1' joint (Single Reinforced Section).
Use 'KS-2' joint (Double Reinforced Section).
- ④ Polymer Grid and excavation limits of Modified Subbase 2 feet outside of pavement edge. See BR-201, BR-202, BR-203, or BR-204.
- ⑤ Slope subdrain to drain.
- ⑥ Place an "X" in the plastic concrete near the 'EF' joint at the outside edge of pavement.
- ⑦ 4 inch perforated subdrain (polyethylene, corrugated tubing).
- ⑧ See DR-303 or DR-306 for outlet details
- ⑨ 'DW' or 'RT' joint.



 STANDARD ROAD PLAN	REVISION	
	2	10-18-22
BR-231 SHEET 1 of 1		
REVISIONS: Revised curb note.		
 APPROVED BY DESIGN METHODS ENGINEER		
BRIDGE APPROACH (MULTI-LANE, CURBED ROADWAY)		