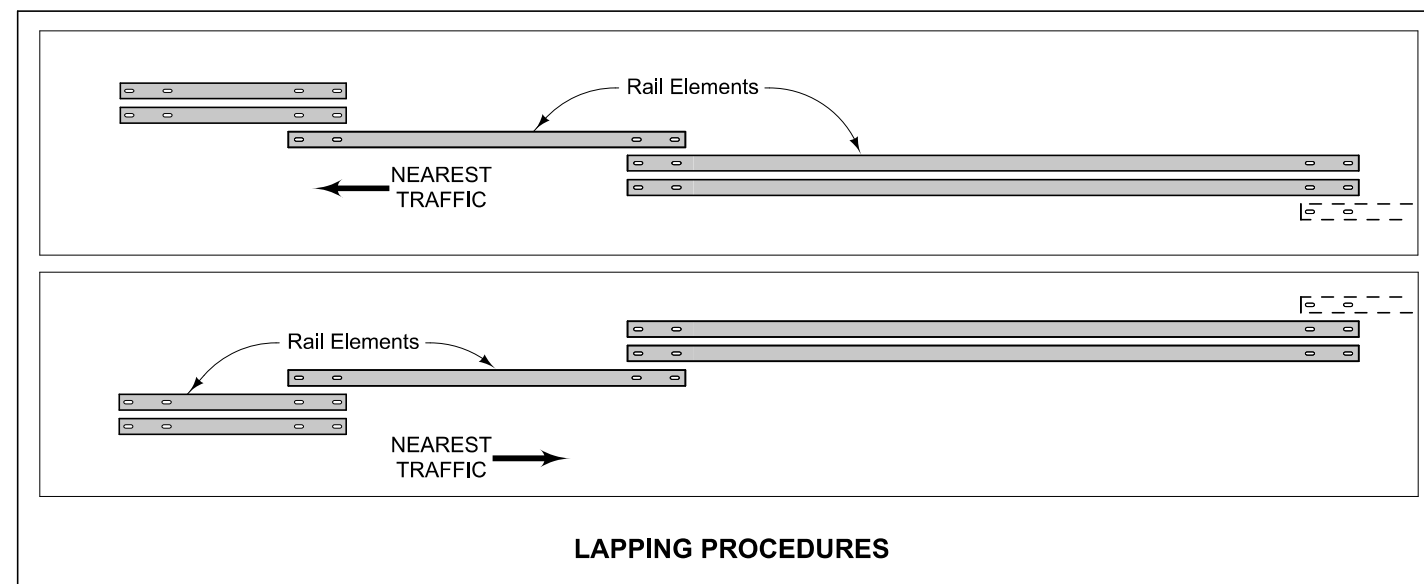
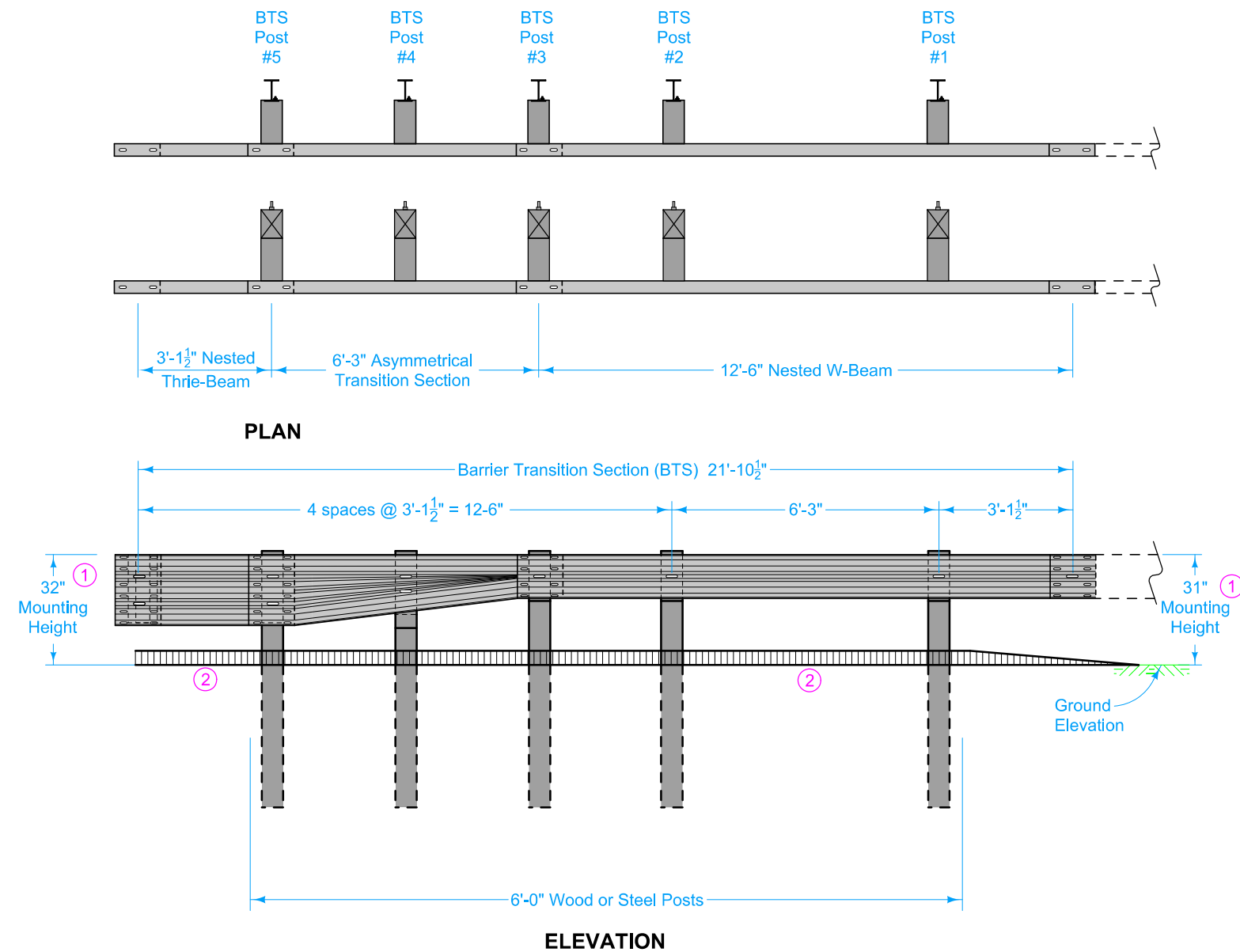


DESIGNER INFORMATION

At Bridge End Drains, cut Scour Protection (Transition Mat and Turf Reinforcement Mat) or remove rock as required to place post(s) such that Bridge End Drains abut post(s).

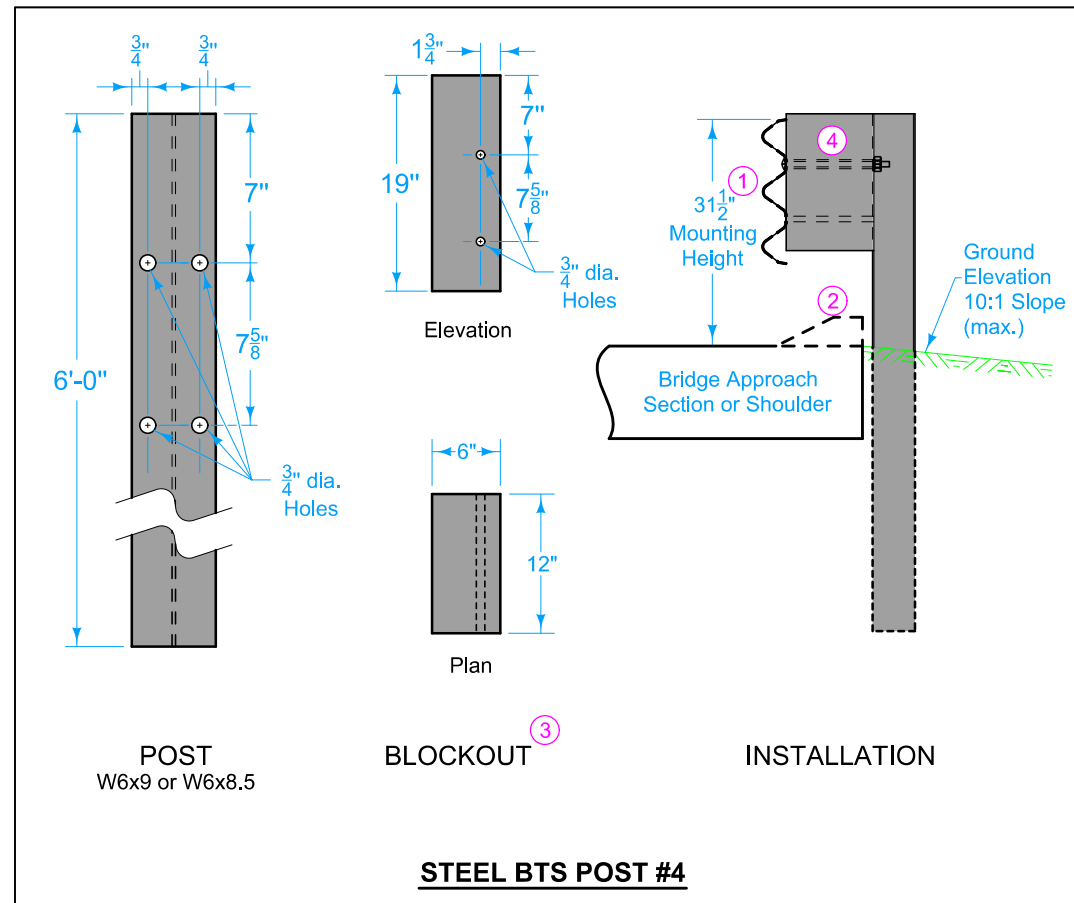
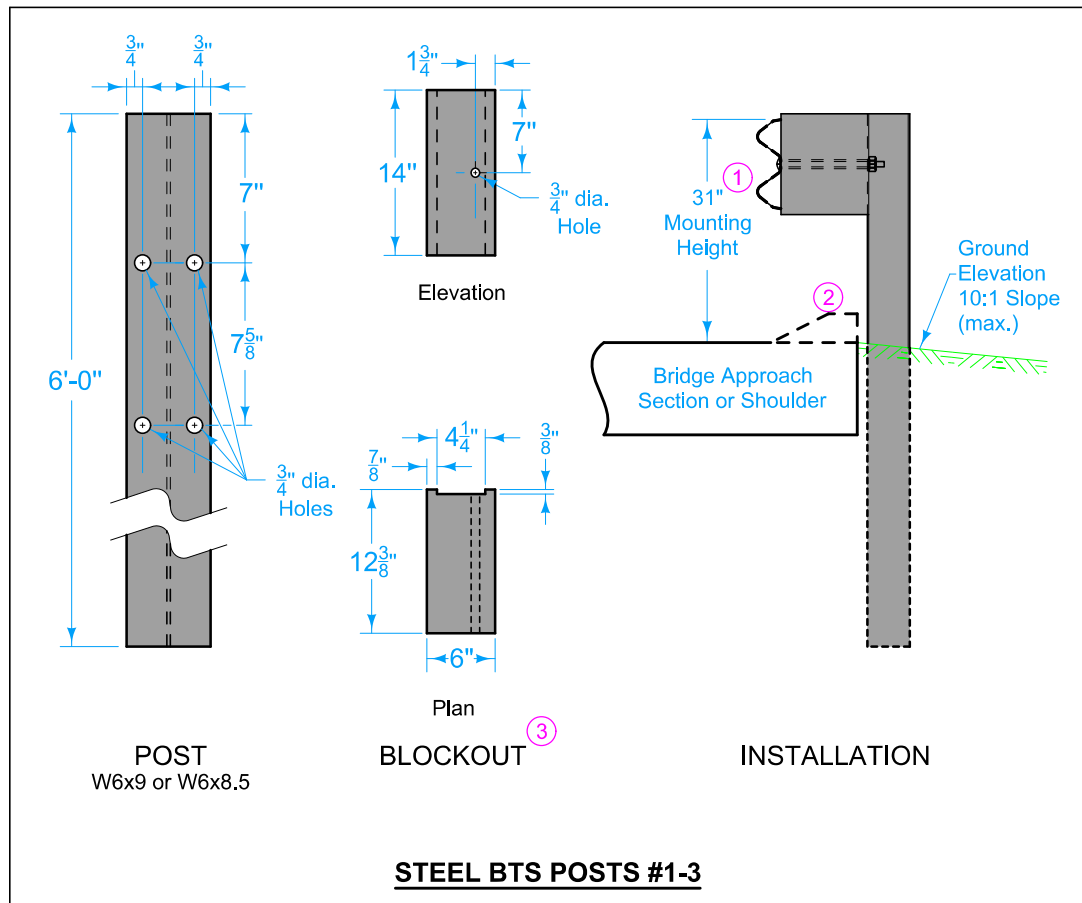
- ① Guardrail mounting height at barrier connection is 32 inches. Transition guardrail mounting height down to 31 inches at BTS Post #3.
- ② Possible 4 inch sloped curb. See project plans. Refer to PV-102 for curb and runout details.



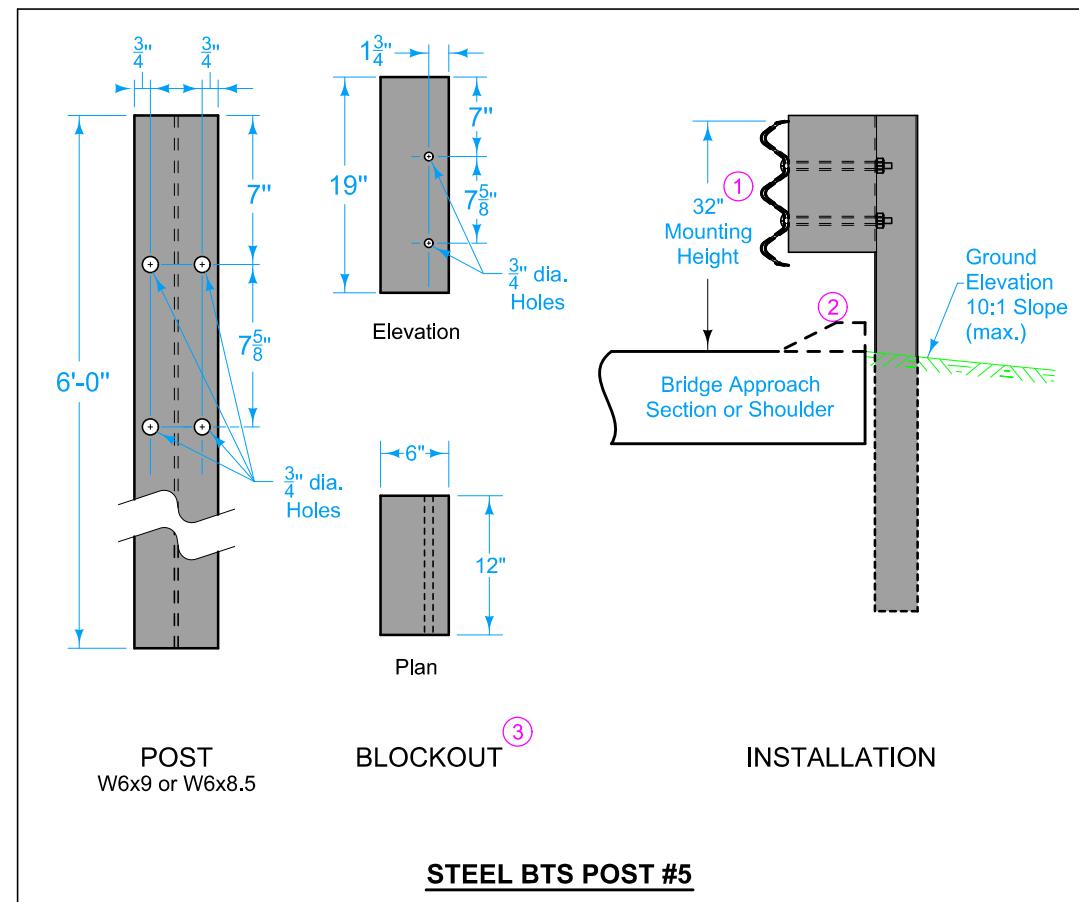
Possible Contract Item:
Steel Beam Guardrail Barrier Transition Section, BA-221

- Materials included in the Contract Item:
- Steel Post Option:
- (5) W6x9 x 6'-0" posts
 - (2) 6" x 12" x 19" blockouts
 - (3) 6" x 12" x 14" blockouts
- Wood Post Option:
- (5) 6" x 8" x 6'-0" posts
 - (2) 6" x 12" x 19" blockouts
 - (3) 6" x 12" x 14" blockouts
- (1) Asymmetrical Transition Section
 - (2) 3'-1 1/2" Thrie-Beam rail sections
 - (2) 12'-6" W-Beam rail sections
- Approved bolts, nuts, and washers
Refer to BA-200 for guardrail components

	REVISION	
	3	10-18-22
STANDARD ROAD PLAN		BA-221
REVISIONS: Revised curb note.		SHEET 1 of 3
 APPROVED BY DESIGN METHODS ENGINEER		
STEEL BEAM GUARDRAIL BARRIER TRANSITION SECTION (MASH TL-2)		



- ① Guardrail mounting height at barrier connection is 32 inches. Transition guardrail mounting height down to 31 inches at BTS Post #3.
- ② Possible 4 inch sloped curb. See project plans. Refer to PV-102 for curb and runout details.
- ③ Wood or composite only. Steel blockouts will not be allowed.
- ④ Place bolt in top hole only.

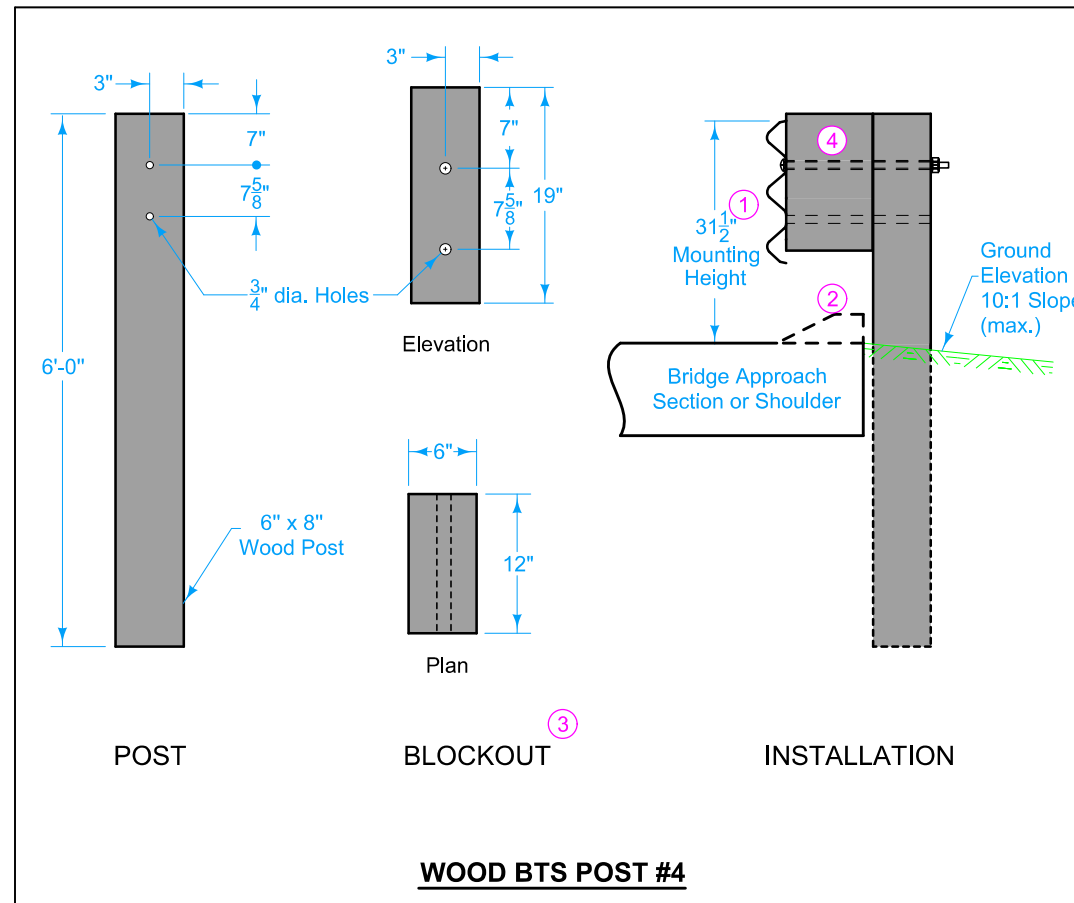
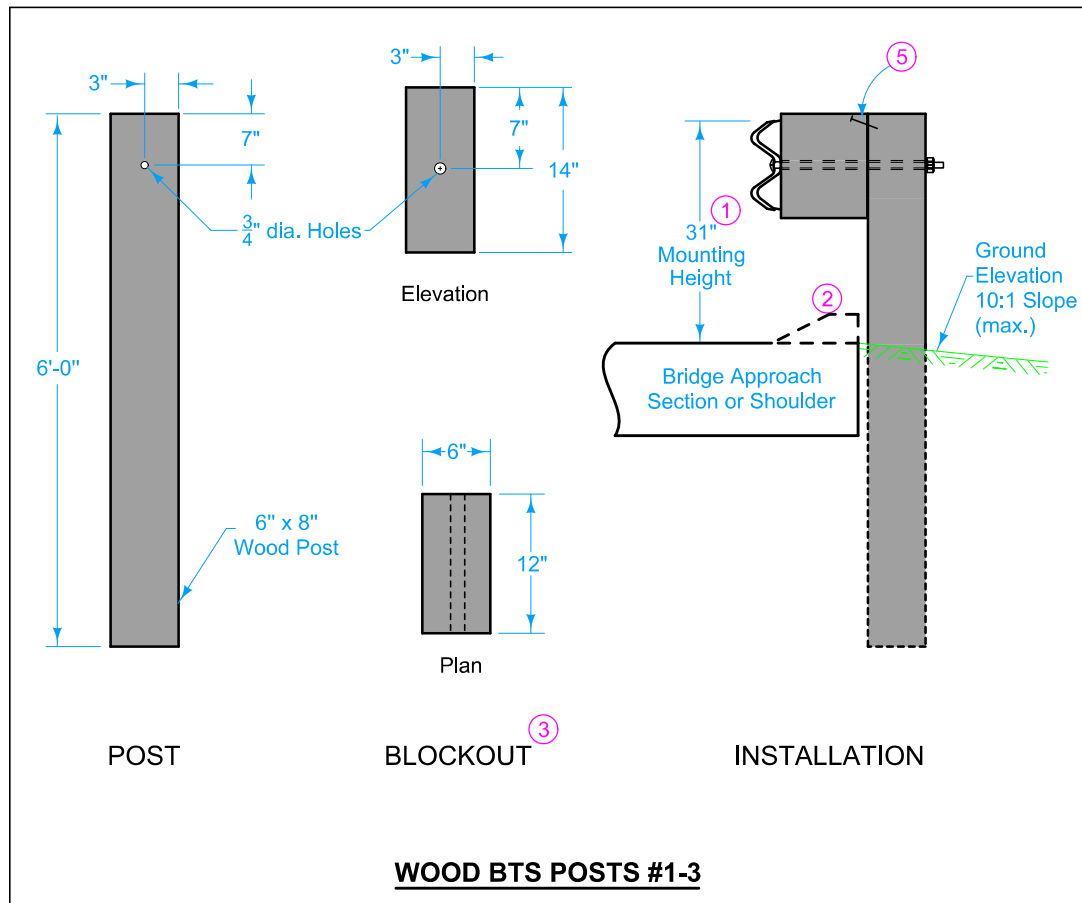


 STANDARD ROAD PLAN	REVISION	
	3	10-18-22
	BA-221	
SHEET 2 of 3		

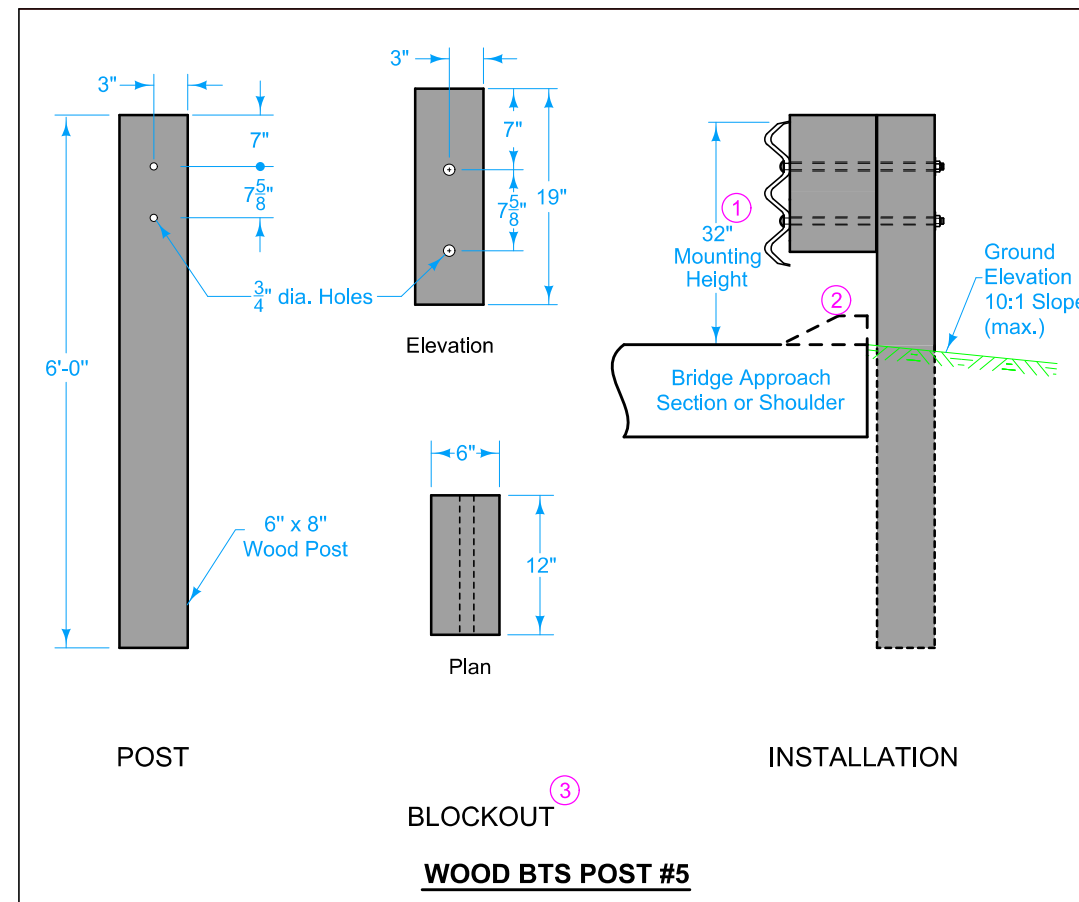
REVISIONS: Revised curb note.

Steve Miller
APPROVED BY DESIGN METHODS ENGINEER

**STEEL BEAM GUARDRAIL
BARRIER TRANSITION SECTION
(MASH TL-2)**



- ① Guardrail mounting height at barrier connection is 32 inches. Transition guardrail mounting height down to 31 inches at BTS Post #3.
- ② Possible 4 inch sloped curb. See project plans. Refer to PV-102 for curb and runout details.
- ③ Wood or composite only. Steel blockouts will not be allowed.
- ④ Place bolt in top hole only.
- ⑤ 16d nail to prevent blockout rotation.



	REVISION	
	3	10-18-22
	BA-221	
SHEET 3 of 3		
REVISIONS: Revised curb note.		
APPROVED BY DESIGN METHODS ENGINEER		
STEEL BEAM GUARDRAIL BARRIER TRANSITION SECTION (MASH TL-2)		