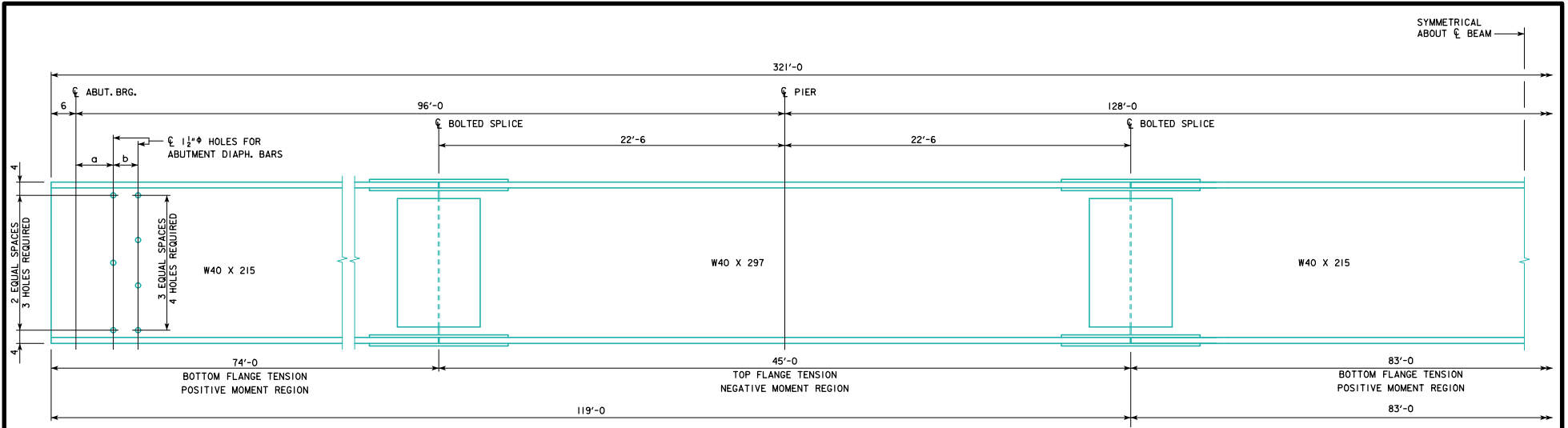
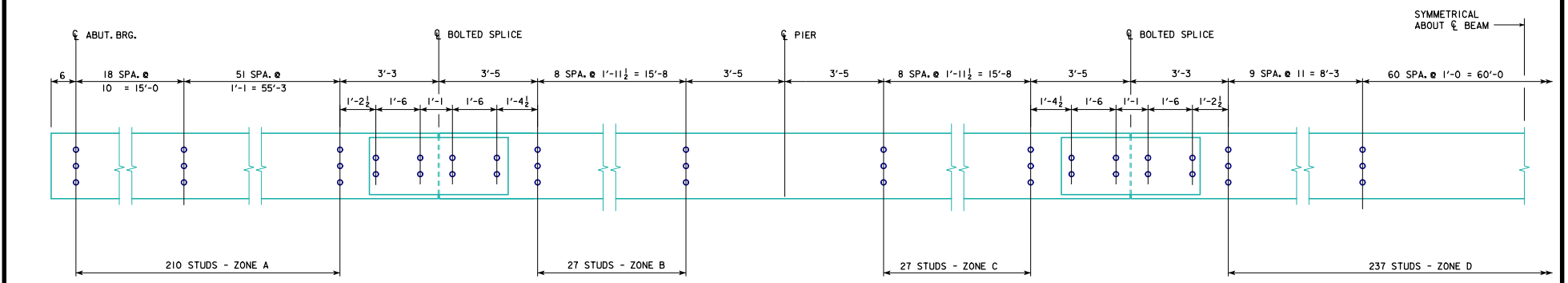


REVISED 02-14 - A STUD HEIGHT OF 4" WAS ADDED TO THE *NOTE
 REVISED 10-2016 - ADDED 8 SHEAR STUDS AT EACH "CENTERLINE OF BOLTED SPLICE" LOCATION BETWEEN "ZONE A & B" AND "ZONE C & D". ADDED "SHEAR STUD ON SPLICE PLATE DETAILS" SHOWING 2 STUDS PER ROW.

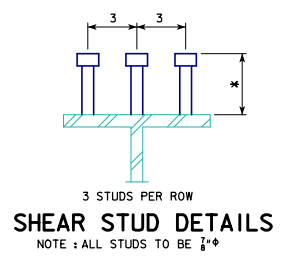
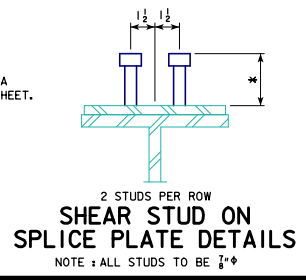


BEAM ELEVATION



SHEAR STUD SPACING

* NOTE: STUD HEIGHTS (3 1/2", 4" OR 5") FOR THE LOCATIONS SHOWN SHALL BE DETERMINED BY THE DESIGNER. ON "MISCELLANEOUS DETAILS 320'-0" BRIDGE" SHEET, STUD HEIGHTS CAN BE IDENTIFIED BY THE DESIGNER IN A TABLE CORRESPONDING TO THE ZONES LISTED ON THIS SHEET.



SKEW	a (IN)	b (IN)
0°	9	6
10°	9 1/2	6 1/2
20°	9 3/4	6 3/4
30°	10 1/4	6 1/2
45°	12 3/4	8 1/2

10-2016
 LATEST REVISION DATE
 Approved by: *Thomas E. McQuinn*
 APPROVED BY BRIDGE ENGINEER

STANDARD DESIGN - 40' ROADWAY, 3 SPAN BRIDGES
ROLLED STEEL BEAM BRIDGES
 JUNE, 2010

**BEAM PLAN AND ELEVATION
 320'-0" BRIDGE**

RS40-079-10