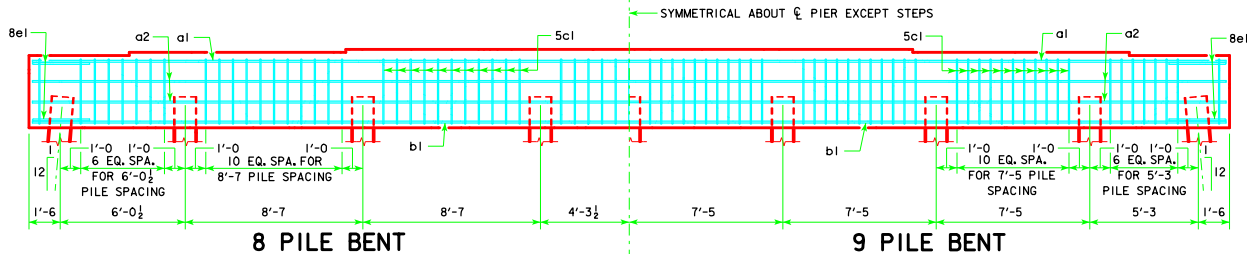


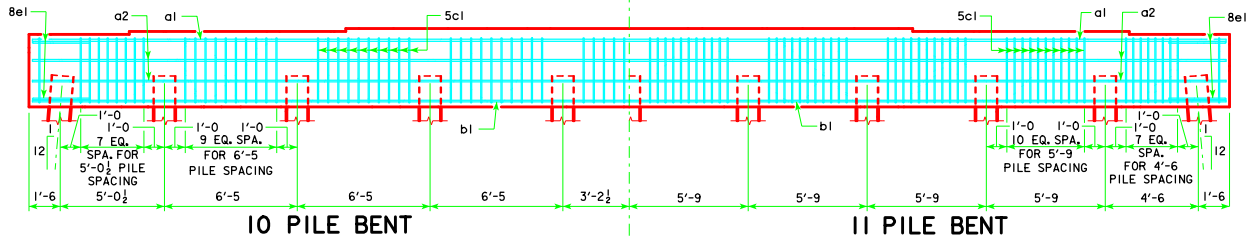
TYPICAL PLAN

NOTE:  
 THE HEIGHT OF THE STEPS ON THE BRIDGE SEAT IS EQUAL TO THE DIFFERENCE IN ELEVATIONS OF THE TOP OF SLAB AT ADJACENT BEAMS ALONG C PIER.  
 ANCHOR BOLTS REQUIRED FOR FIXED PIER BEARINGS ONLY. FOR BOLT AND BEARING SIZES, SEE RS40-093-14, RS40-094-14 OR RS40-095-14.



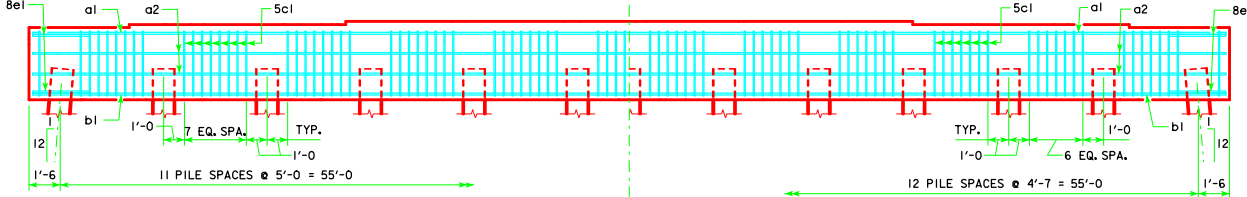
8 PILE BENT

9 PILE BENT



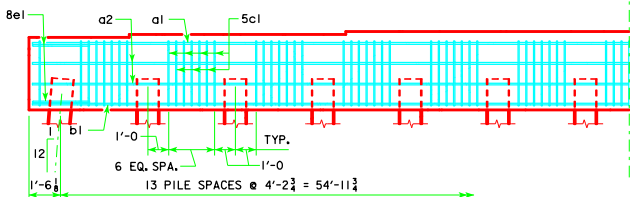
10 PILE BENT

11 PILE BENT

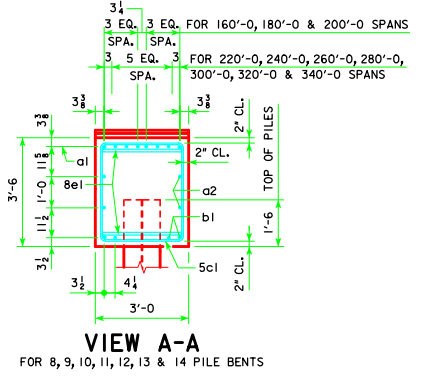


12 PILE BENT

13 PILE BENT



14 PILE BENT



VIEW A-A

FOR 8, 9, 10, 11, 12, 13 & 14 PILE BENTS

|                      |                                 |                                                                                                        |                    |
|----------------------|---------------------------------|--------------------------------------------------------------------------------------------------------|--------------------|
| LATEST REVISION DATE | <br>APPROVED BY BRIDGE ENGINEER | <br>STANDARD DESIGN - 40' ROADWAY, 3 SPAN BRIDGES<br><b>ROLLED STEEL BEAM BRIDGES</b><br>OCTOBER, 2014 |                    |
|                      |                                 | <b>PILE BENT PIERS</b><br><b>HPI4 PILES</b><br>45° SKEW                                                | <b>RS40-114-14</b> |
|                      |                                 |                                                                                                        |                    |