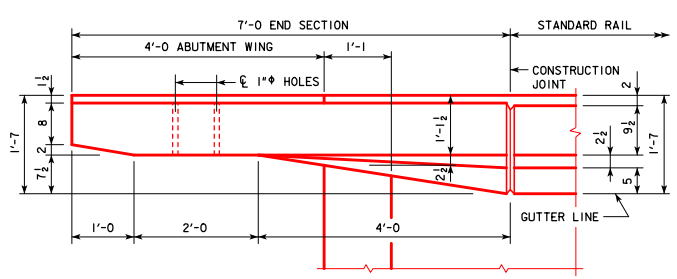
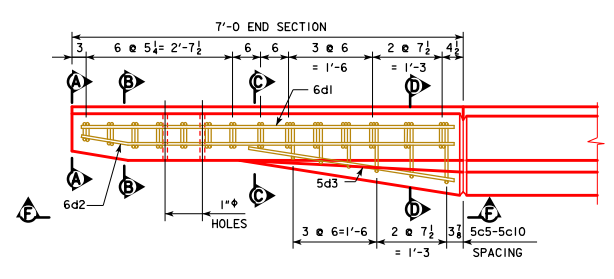


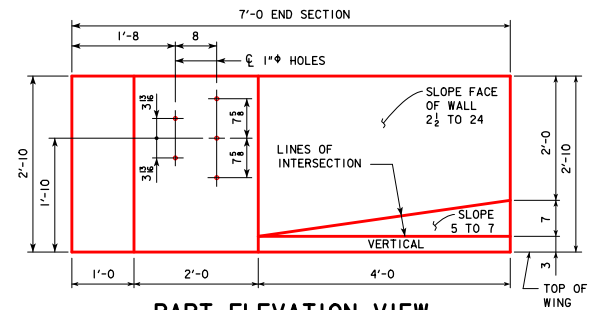
REVISED 07-09: CHANGED SHAPE OF 5c5-5c10 BARS.  
REVISED 08-2020: UPDATED BRIDGE ENGINEER SIGNATURE. CHANGED SECTION A-A (WAS VIEW A-A).



**PART PLAN VIEW**

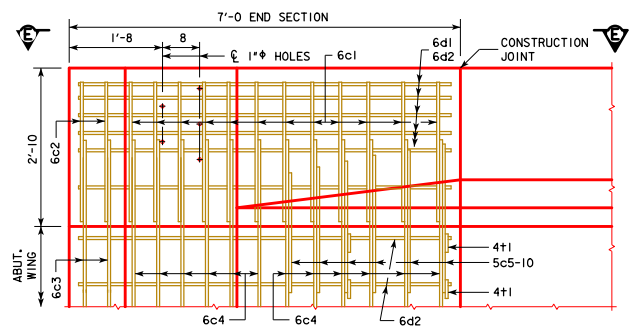


**PART VIEW E-E**

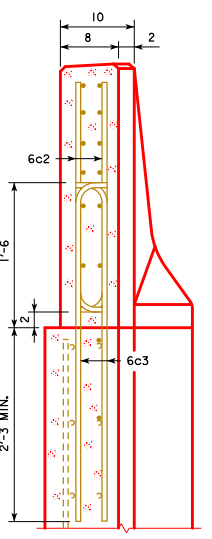


**PART ELEVATION VIEW**

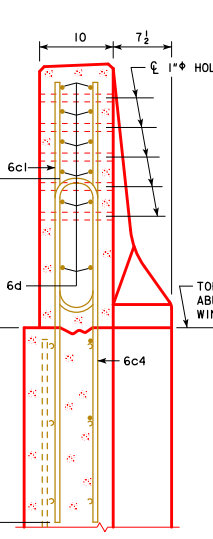
PROVIDE 5 HOLES FORMED WITH 1" PLASTIC CONDUIT. COST TO BE INCLUDED IN PRICE BID FOR CONCRETE BARRIER RAILING.



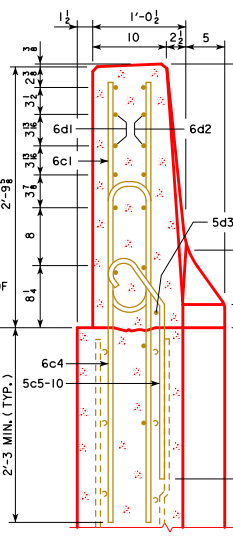
**PART VIEW F-F**



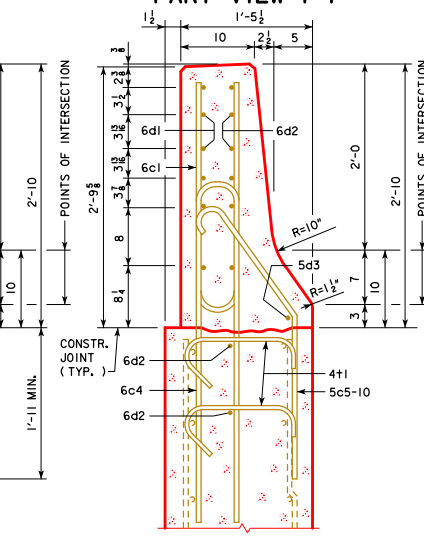
**SECTION A-A**



**SECTION B-B**



**SECTION C-C**



**SECTION D-D**

NOTE:  
4+1 PLACEMENT- 2 BARS EACH LEVEL OF 6d2 IN WING FOOTING.

NOTE:  
CONSTRUCTION JOINT BETWEEN TOP OF WING AND BARRIER RAIL IS ROUGHENED CONCRETE.

NOTE:  
THE 10" RADIUS AND 1 1/2" RADIUS ARE TYPICAL AND SHALL BE USED WHEN CONSTRUCTING THE CORNERS FOR SECTION A-A, SECTION B-B, SECTION C-C AND SECTION D-D.

NOTE:  
THE 6c4, 6c3, 5c5-10, 2 - 6d2 AND 4+1 BARS ARE TO BE PLACED WITH THE ABUTMENT WING. THE DETAILS FOR PLACEMENT ARE SHOWN ON THE WING ABUTMENT SHEET.

NOTE:  
DASHED LINES BELOW THE TOP OF WING ARE THE ABUTMENT WING REINFORCING STEEL. SEE WING ABUTMENT SHEET FOR PLACEMENT.

EPOXY REINFORCING STEEL - ONE END SECTION					
BAR	LOCATION	SHAPE	NO.	LENGTH	WEIGHT
6c1	VERTICAL		12	5'-6"	99
6c2	VERTICAL		4	2'-10"	17
6c3	VERTICAL		4	4'-1"	25
6c4	VERTICAL		12	8'-0"	144
5c5-10	VERTICAL		6	VARIES	23
6d1	HORIZONTAL		6	6'-8"	60
6d2	HORIZONTAL		8	6'-9"	81
5d3	HORIZONTAL		1	3'-9"	4
4+1	ABUTMENT WING TIE BARS		4	VARIES	5
(INCLUDE WITH BARRIER RAIL REINFORCING)				TOTAL WEIGHT (LBS.)	458

CONCRETE PLACEMENT SUMMARY	
SECTION	TOTAL
BARRIER RAIL ONE END SECTION	0.65 CU. YD.

### BENT BAR DETAILS

BAR	"x"
5c5	0'-6 1/2"
5c6	0'-8 1/2"
5c7	0'-10 1/2"
5c8	1'-0 1/4"
5c9	1'-2"
5c10	1'-4"

NOTE: ALL DIMENSIONS ARE OUT TO OUT.  
D = PIN DIAMETER.

08-2020  
LATEST REVISION DATE

*[Signature]*  
APPROVED BY BRIDGE ENGINEER

**IOWADOT** Highway Division

STANDARD DESIGN - 40' ROADWAY, 3 SPAN BRIDGES

**CONTINUOUS CONCRETE SLAB BRIDGES**

NOVEMBER, 2006

**BARRIER RAIL END SECTION**      **J40-47-06**