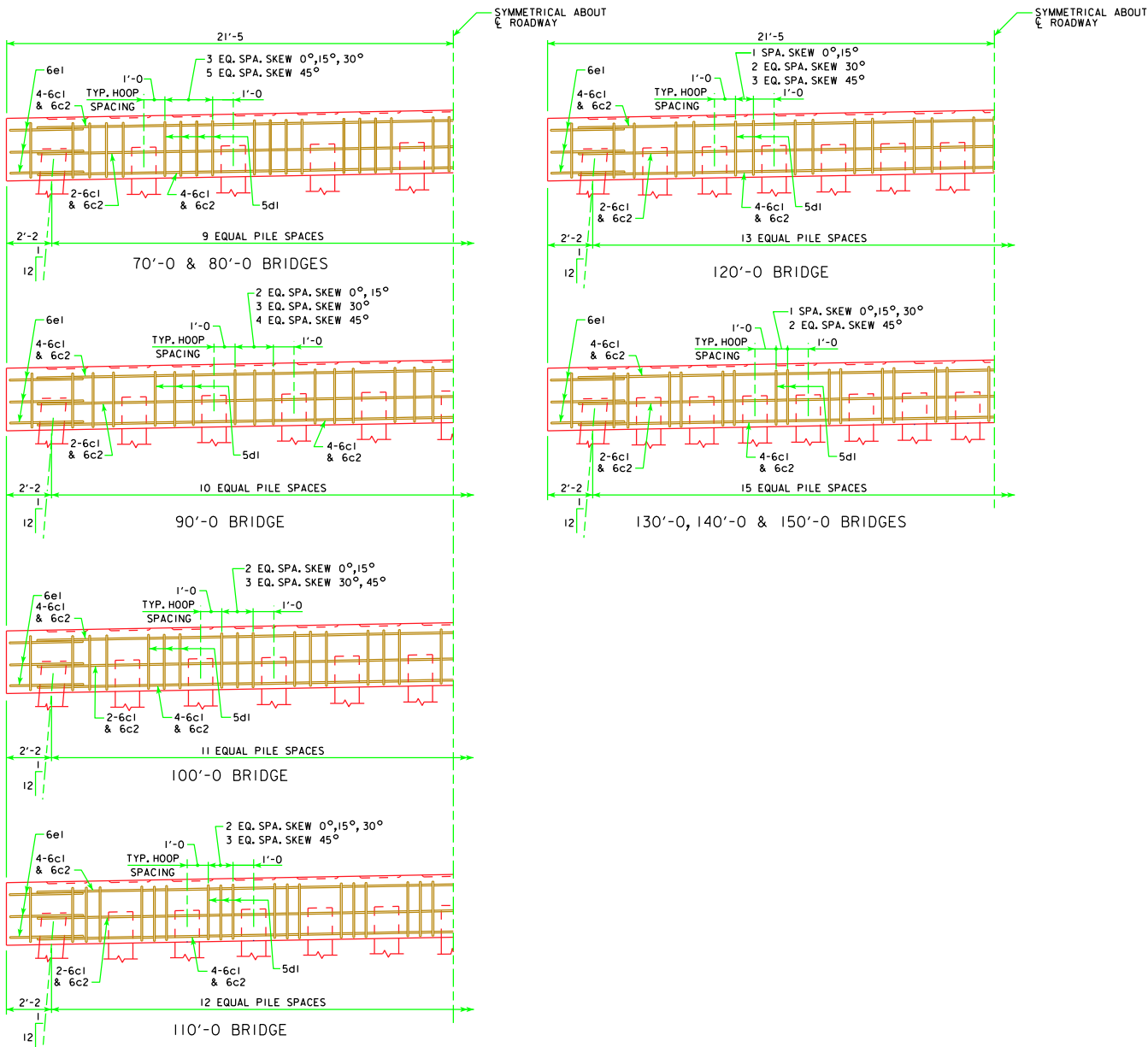
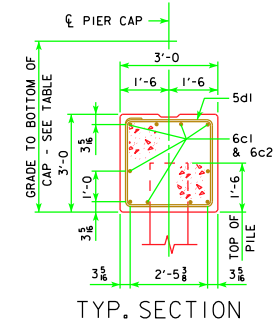


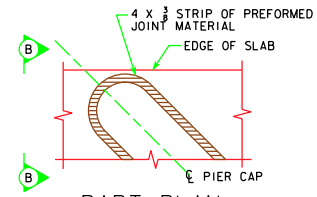
REVISED 11-08 - REVISED PILES REQUIRED FOR 130'-0 BRIDGE. ADDED EXTRA 5d1 BARS TO END OF CAP.



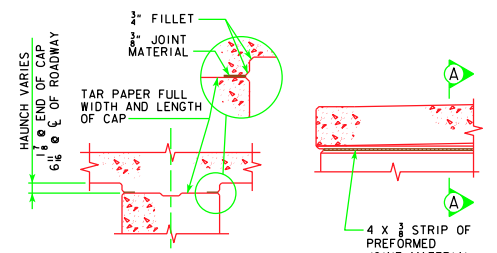
TYP. HALF ELEVATION PIER CAP
(LOOKING PARALLEL TO ξ ROADWAY)



GRADE TO BOTTOM OF CAP DIMENSION	
70'-0 BRIDGE	4'-9 1/8
80'-0 BRIDGE	4'-9 1/8
90'-0 BRIDGE	4'-10 1/8
100'-0 BRIDGE	5'-0 3/8
110'-0 BRIDGE	5'-1 1/8
120'-0 BRIDGE	5'-2 1/8
130'-0 BRIDGE	5'-3 1/8
140'-0 BRIDGE	5'-5 1/8
150'-0 BRIDGE	5'-6 1/8



SHOWING TREATMENT OF 4 X 3/8 STRIP OF PREFORMED JOINT MATERIAL AT ENDS OF PIER CAP. NOTE THAT JOINT MATERIAL IS TO GO ALL THE WAY AROUND PIER CAP FOR SQUARE AND SKEWED BRIDGES.



PART SECT A-A PART SECT B-B

11-08 LATEST REVISION DATE <i>Thomas E. McQuinn</i> APPROVED BY BRIDGE ENGINEER		Iowa Department of Transportation Highway Division STANDARD DESIGN - 40' ROADWAY, 3 SPAN BRIDGES CONTINUOUS CONCRETE SLAB BRIDGES NOVEMBER, 2006	NON-MONOLITHIC PIER CAP DETAILS ALL BRIDGES J40-27-06