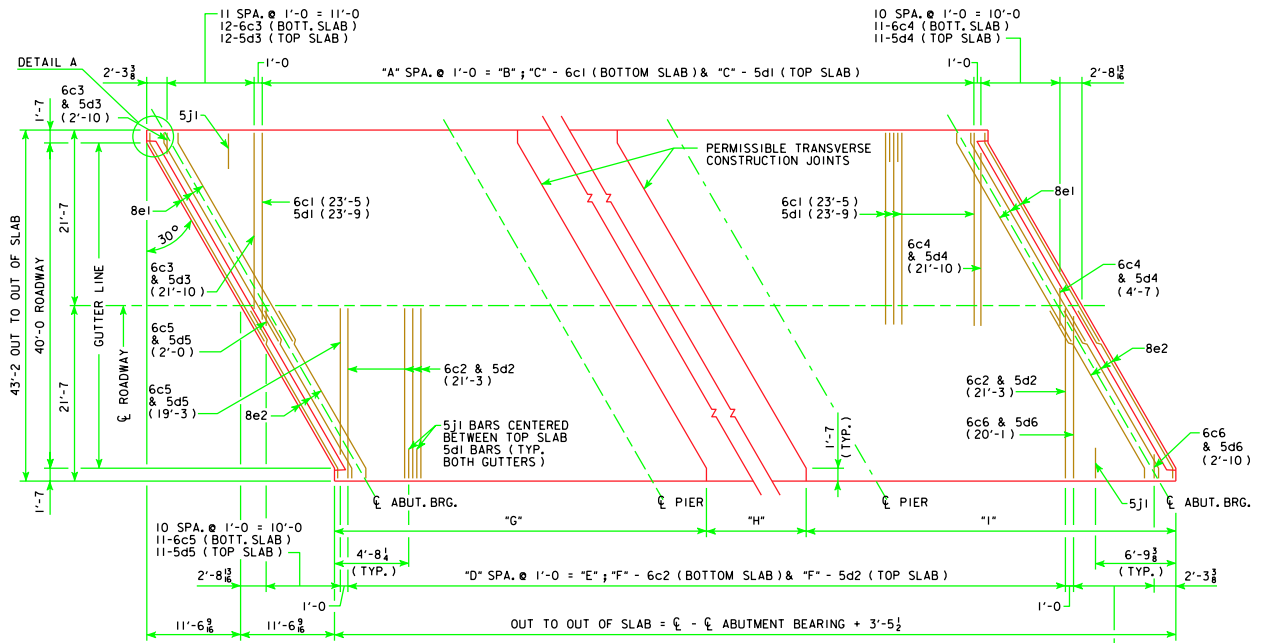


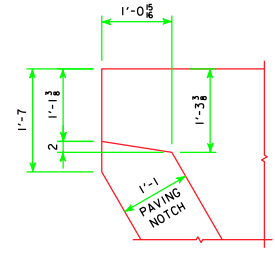
30° TRANSV. REINFORCING DIMENSION TABLE

BRIDGE	"A"	"B"	"C"	"D"	"E"	"F"	"G"	"H"	"I"
70' BRIDGE	57	57'-0	58	58	58'-0	59	27'-8½	17'-0	28'-9
80' BRIDGE	67	67'-0	68	68	68'-0	69	31'-8½	19'-0	32'-9
90' BRIDGE	77	77'-0	78	78	78'-0	79	35'-8½	21'-0	36'-9
100' BRIDGE	87	87'-0	88	88	88'-0	89	39'-8½	23'-0	40'-9
110' BRIDGE	97	97'-0	98	98	98'-0	99	43'-8½	25'-0	44'-9
120' BRIDGE	107	107'-0	108	108	108'-0	109	47'-8½	27'-0	48'-9
130' BRIDGE	117	117'-0	118	118	118'-0	119	51'-8½	29'-0	52'-9
140' BRIDGE	127	127'-0	128	128	128'-0	129	55'-8½	31'-0	56'-9
150' BRIDGE	137	137'-0	138	138	138'-0	139	59'-8½	33'-0	60'-9



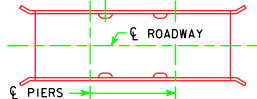
30° SKEW TRANSVERSE REINFORCING STEEL LAYOUT

NOTE:
5d BARS ARE TO PASS UNDER
8e BARS IN CONFLICT AREAS.



DETAIL A

70'-0	5'-6 (TYP.)
80'-0	5'-6 (TYP.)
90'-0	6'-6 (TYP.)
100'-0	6'-6 (TYP.)
110'-0	7'-6 (TYP.)
120'-0	7'-6 (TYP.)
130'-0	8'-6 (TYP.)
140'-0	8'-6 (TYP.)
150'-0	8'-6 (TYP.)



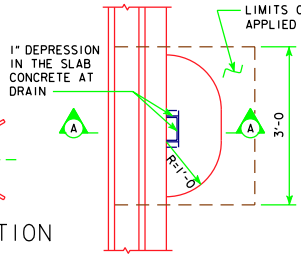
FLOOR DRAIN LOCATION

NOTE: 4" x 8" OUTSIDE DIMENSION ROLLED TUBE WITH 1/2" WALL THICKNESS MAY BE SUBSTITUTED FOR THE WELDED DRAIN SHOWN.

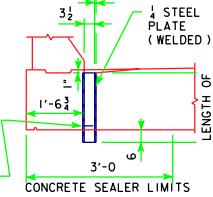
PART PLAN

FLOOR DRAIN DETAILS

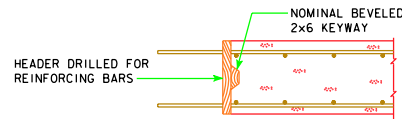
(USE FOR BARRIER RAIL ONLY, NOT REQUIRED FOR OPEN RAIL)
NOTE: DRAINS ARE TO BE GALVANIZED. INCLUDE COST OF DRAINS IN PRICE BID FOR "STRUCTURAL CONCRETE". 4 DRAINS REQUIRED.



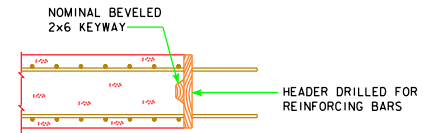
1 1/4" x 1 1/4" x 1/8" x 0'-3" WELDED TO BOTH SIDES OF DRAIN WITH 2-1/8" HOLES IN EACH OUTSTANDING LEG FOR NAILING TO FORMS



SECTION A-A



TRANSVERSE CONSTR. JOINT



LONGITUDINAL CONSTR. JOINT

WEIGHT OF ONE FLOOR DRAIN			
SPAN	WEIGHT, LBS.	SPAN	WEIGHT, LBS.
70'-0	32	120'-0	41
80'-0	33	130'-0	43
90'-0	35	140'-0	45
100'-0	37	150'-0	48
110'-0	39		

07-09 LATEST REVISION DATE APPROVED BY BRIDGE ENGINEER 	 Iowa Department of Transportation Highway Division	
	STANDARD DESIGN - 40' ROADWAY, 3 SPAN BRIDGES CONTINUOUS CONCRETE SLAB BRIDGES NOVEMBER, 2006	
	SUPERSTRUCTURE DETAILS ALL BRIDGES	J40-23-06 30° SKEW

REVISED 07-09 - CHANGED THE DRAIN ANGLES DETAILS ON SECTION A-A.