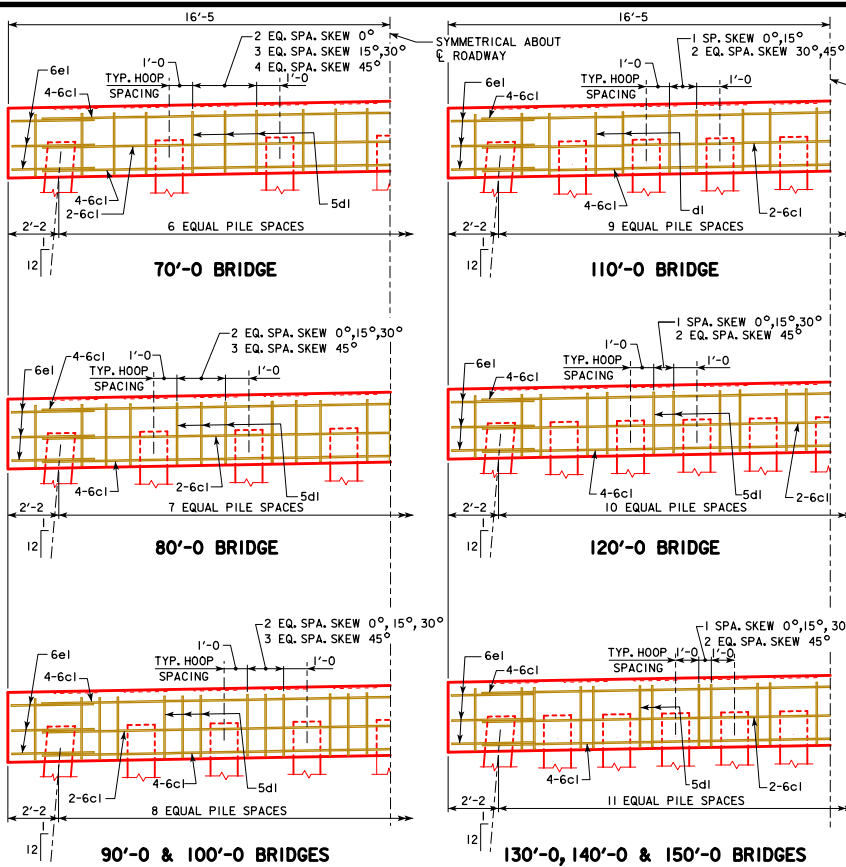
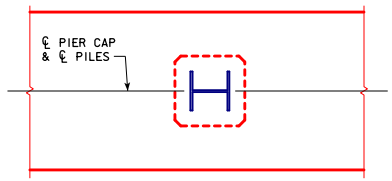


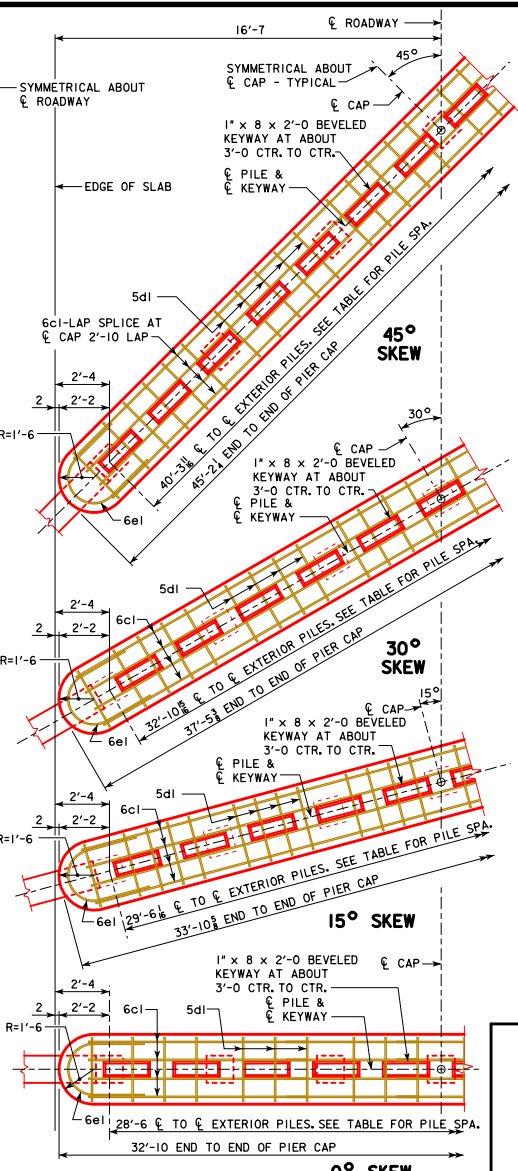
REVISED 08-2014: THE BRIDGE LENGTHS FOR THE TYP. HALF ELEVATION PIER CAP WERE CHANGED TO SHOW THE CORRECT HALF SECTION FOR THE CORRECT LENGTH.
REVISED 09-2020: UPDATED BRIDGE ENGINEER SIGNATURE.



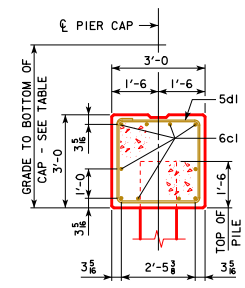
TYP. HALF ELEVATION PIER CAP
(LOOKING PARALLEL TO ϕ ROADWAY)



PILE ORIENTATION DETAIL FOR TYPE 3 TRESTLE BENT PILES

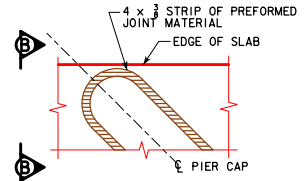


TYP. HALF PLAN VIEW
NOTE: NUMBER OF PILES AND STIRRUPS SHOWN ARE FOR A 70'-0" BRIDGE. CAP DIMENSIONS ARE TYPICAL FOR ALL BRIDGES.



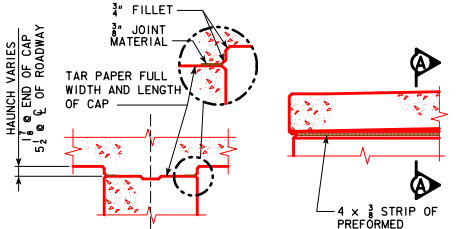
TYP. SECTION

GRADE TO BOTTOM OF CAP DIMENSION	
70'-0" BRIDGE	4'-8"
80'-0" BRIDGE	4'-8 1/2"
90'-0" BRIDGE	4'-9 1/2"
100'-0" BRIDGE	4'-11"
110'-0" BRIDGE	5'-0"
120'-0" BRIDGE	5'-1 1/2"
130'-0" BRIDGE	5'-2 1/2"
140'-0" BRIDGE	5'-4"
150'-0" BRIDGE	5'-5 1/2"



PART PLAN

SHOWING TREATMENT OF 4 x 3/8 STRIP OF PREFORMED JOINT MATERIAL AT ENDS OF PIER CAP. NOTE THAT JOINT MATERIAL IS TO GO ALL THE WAY AROUND PIER CAP FOR SQUARE AND SKEWED BRIDGES.



PART SECT A-A

PART SECT B-B

09-2020
LATEST REVISION DATE
[Signature]
APPROVED BY BRIDGE ENGINEER

IOWADOT Highway Division
STANDARD DESIGN - 30' ROADWAY, 3 SPAN BRIDGES
CONTINUOUS CONCRETE SLAB BRIDGES
NOVEMBER, 2006
NON-MONOLITHIC PIER CAP DETAILS ALL BRIDGES
J30-25-06
SHEET 1 OF 2