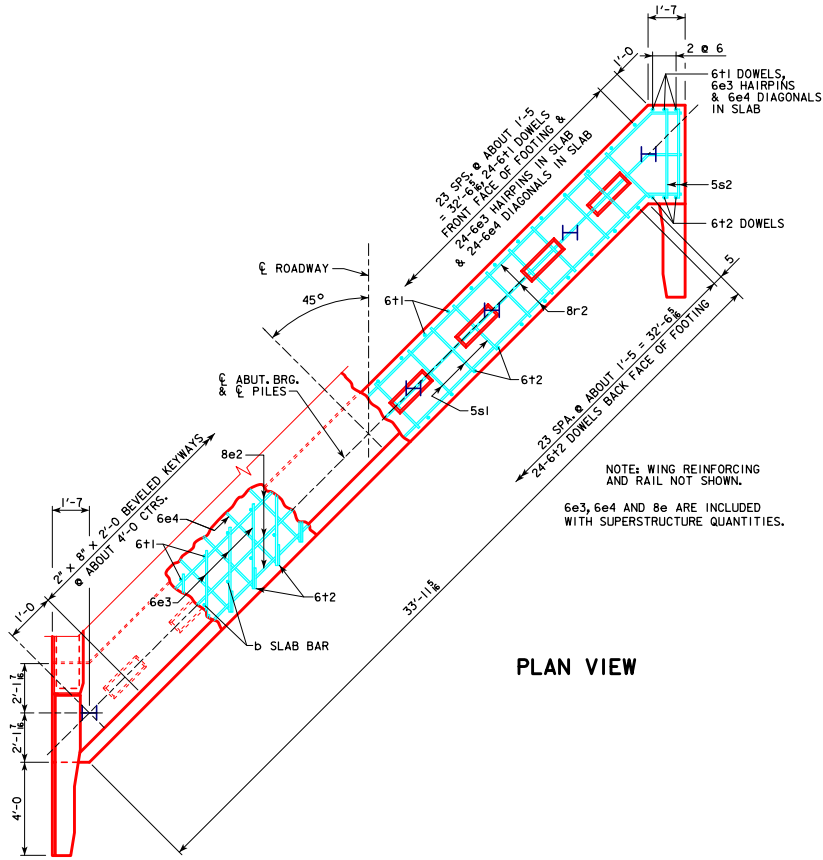


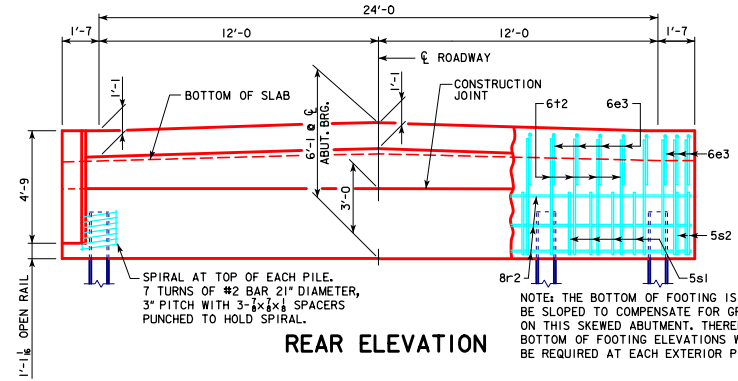
REVISED 06-13 - REVISION FOR LRD, PILE DESIGN.  
REVISED 08-2022: UPDATED BRIDGE ENGINEER SIGNATURE. CHANGED PAVING BLOCK LIFTING HOOP BAR MARK (WAS 5x1).



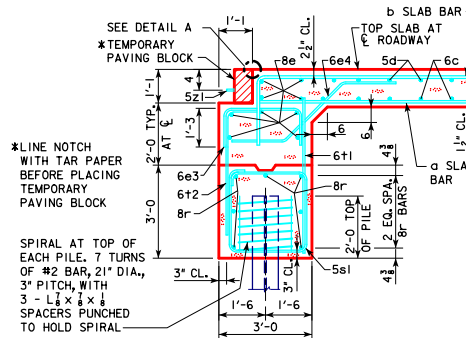
**PLAN VIEW**

**ABUTMENT NOTES:**

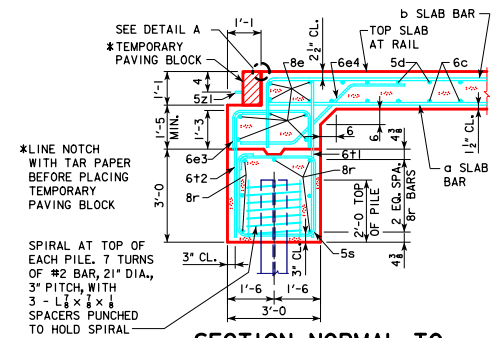
- ALL PILING HP 10x42.
- THE CONCRETE AND REINFORCING STEEL FOR THE WINGS IS INCLUDED WITH THE SUPERSTRUCTURE.
- DETAILS ON THIS SHEET ARE TO BE USED ONLY WHEN ABUTMENTS ARE PLACED ON STEEL PILES. IF ROCK IS ENCOUNTERED CLOSER THAN 12' BELOW ABUTMENT FOOTING, SPECIAL ANALYSIS MAY BE REQUIRED.
- THE MINIMUM CLEAR DISTANCE FROM THE FACE OF THE CONCRETE TO NEAR REINFORCING BAR IS TO BE 2 INCHES UNLESS OTHERWISE NOTED OR SHOWN.
- STEEL ABUTMENT PILES SHALL BE DRIVEN TO FULL PENETRATION IF PRACTICABLE BUT IN NO CASE TO A BEARING VALUE LESS THAN SHOWN IN DESIGN PLANS.
- ALL REINFORCING STEEL IS TO BE GRADE 60.
- ABUTMENT PILING WAS DESIGNED FOR HL-93 LOADING WITH AN ALLOWANCE FOR 20 LBS. PER SQ. FT. FUTURE WEARING SURFACE.



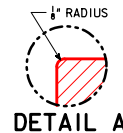
**REAR ELEVATION**



**SECTION NORMAL TO ABUTMENT AT CL**



**SECTION NORMAL TO ABUTMENT AT GUTTERLINE**



|  |                                    |   |
|--|------------------------------------|---|
| <p>LATEST REVISION DATE</p> <p>08-2022</p>                           | <p>APPROVED BY BRIDGE ENGINEER</p> | <p><b>IOWA DOT</b></p> <p>STANDARD DESIGN - 24'-0" ROADWAY, 3 SPAN BRIDGES</p> <p><b>CONTINUOUS CONCRETE SLAB BRIDGES</b></p> <p>NOVEMBER, 2006</p> |
| <p><b>ABUTMENT DETAILS</b></p> <p><b>45° SKEW - STEEL PILING</b></p> |                                    | <p><b>J24-37-06</b></p>   |