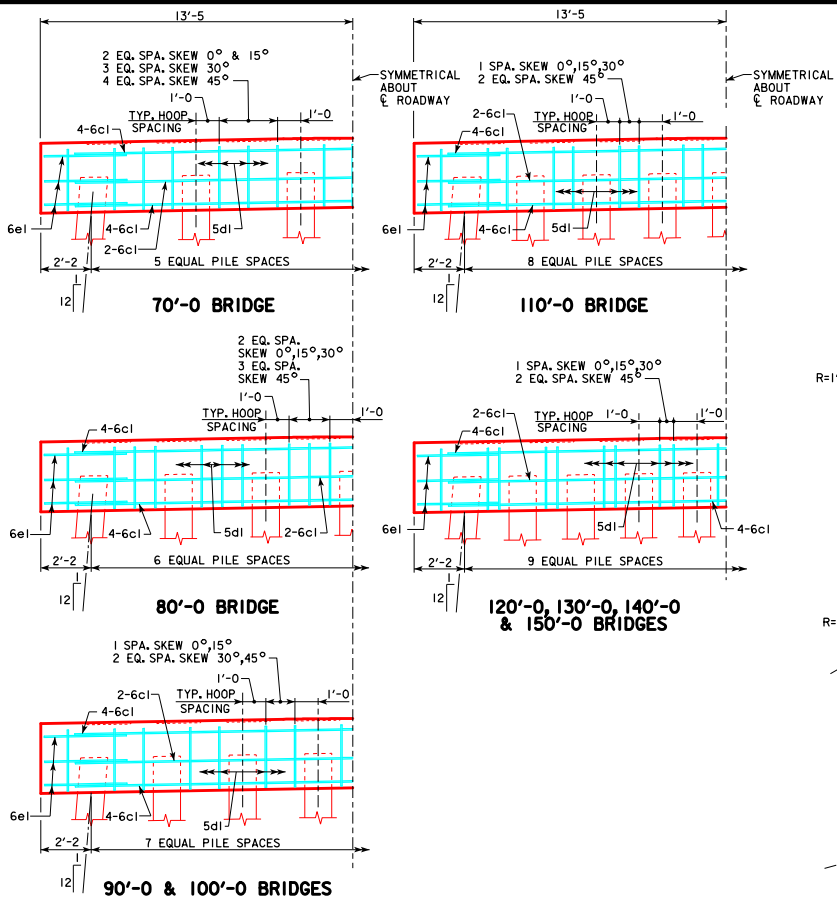
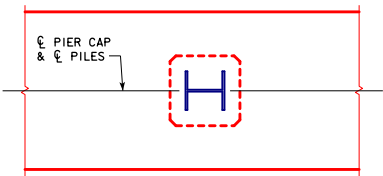


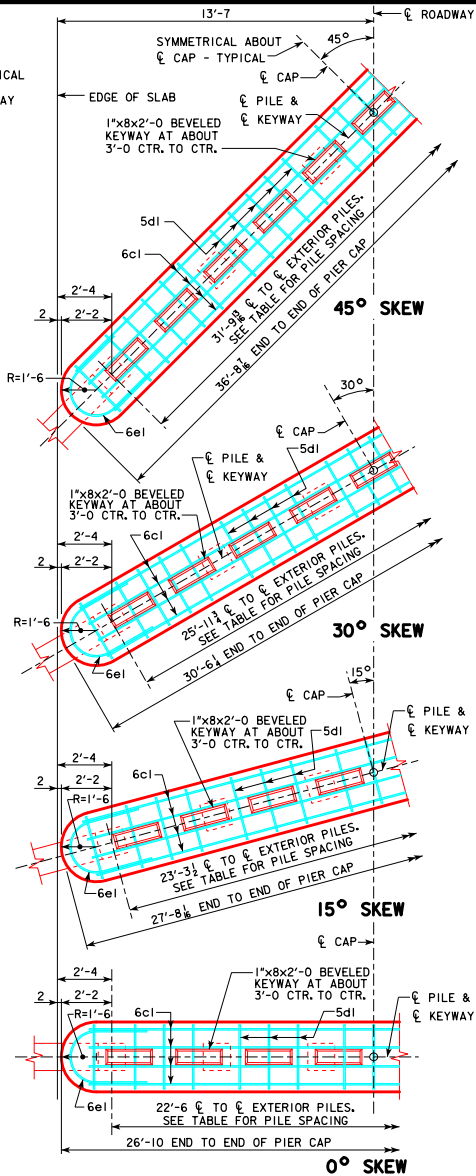
REVISED 12-08 - REVISED PILES REQUIRED 90'-0 AND 120'-0 BRIDGES. ADDED TYPE 3 PILE ORIENTATION DETAIL. EXTRA 5d1 BAR ADDED AT PIER CAP END.  
REVISED 06-2022: UPDATED BRIDGE ENGINEER SIGNATURE.



**TYPICAL HALF ELEVATION PIER CAP**  
(LOOKING PARALLEL TO ROADWAY)

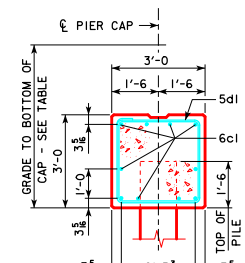


**PILE ORIENTATION DETAIL FOR TYPE 3 TRESTLE BENT PILES**



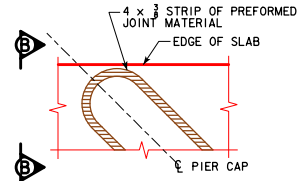
**TYPICAL HALF PLAN VIEW**

NOTE: NUMBER OF PILES AND STIRRUPS SHOWN ARE FOR A 70' BRIDGE. CAP DIMENSIONS ARE TYPICAL FOR ALL SPANS.



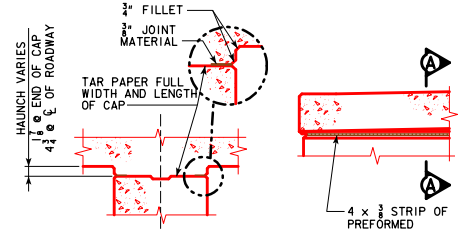
**TYP. SECTION**

GRADE TO BOTTOM OF CAP DIMENSION	
70'-0 BRIDGE	4'-7 1/2
80'-0 BRIDGE	4'-8
90'-0 BRIDGE	4'-9
100'-0 BRIDGE	4'-10 1/2
110'-0 BRIDGE	4'11 1/2
120'-0 BRIDGE	5'-0 1/2
130'-0 BRIDGE	5'-2
140'-0 BRIDGE	5'-3 1/2
150'-0 BRIDGE	5'-4 1/2



**PART PLAN**

SHOWING TREATMENT OF 4 x 3/8 STRIP OF PREFORMED JOINT MATERIAL AT ENDS OF PIER CAP. NOTE THAT JOINT MATERIAL IS TO GO ALL THE WAY AROUND PIER CAP FOR SQUARE AND SKEWED BRIDGES.



**PART SECT A-A PART SECT B-B**

08-2022 LATEST REVISION DATE  APPROVED BY BRIDGE ENGINEER 	 STANDARD CODE SIGN - 244 OR ROADWAYS 355 FROM BRIDGES <b>CONTINUOUS CONCRETE SLAB BRIDGES</b> NOVEMBER, 2006	
	<b>NON-MONOLITHIC PIER CAP DETAILS ALL BRIDGES</b>	<b>J24-25-06</b>
	SHEET 1 OF 2	