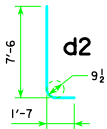
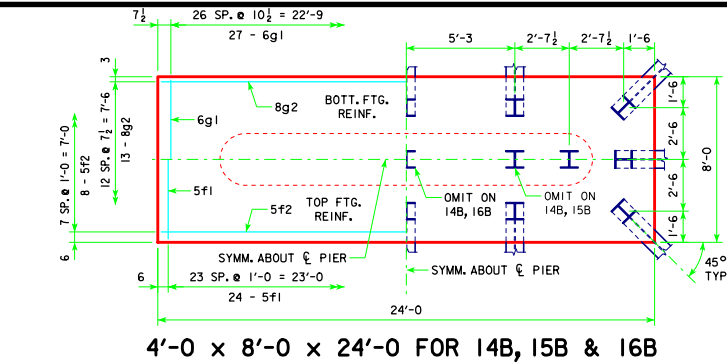


TYPICAL SECTION

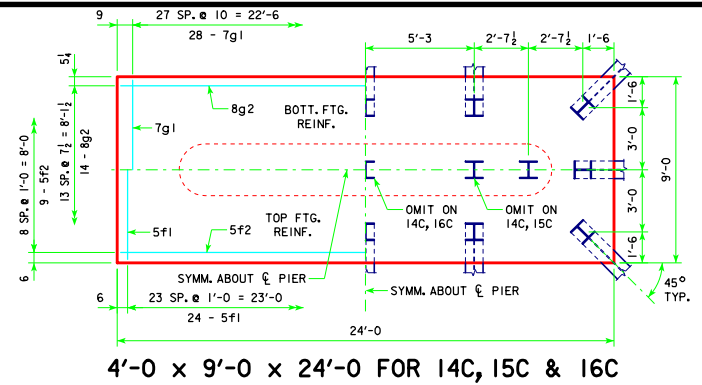


NOTE: D = PIN DIAMETER. DIMENSIONS ARE OUT TO OUT.

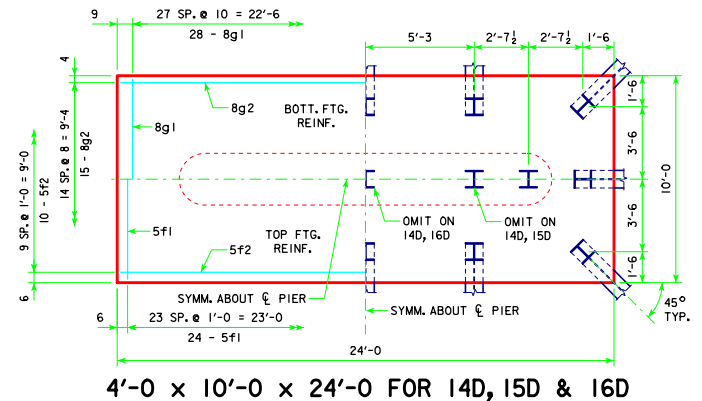
H IN FT.	C - CL. FT.	PILING (HP10x57)		FOOTING SIZE
		NO. & LAYOUT	(1) LRFD PU, STRENGTH I DES. LOAD (KIPS)	
201'-4	14B	209		4' x 8' x 24'
213'-10	14B	217		
226'-4	15B	217		
243'-0	16B	213		
201'-4	14B	213		4' x 8' x 24'
213'-10	15B	212		
226'-4	16B	209		
243'-0	16B	216		
201'-4	14C	213		4' x 9' x 24'
213'-10	15C	211		
226'-4	16C	208		
243'-0	16C	215		
201'-4	14D	213		4' x 10' x 24'
213'-10	15D	211		
226'-4	16D	208		
243'-0	16D	215		
201'-4	14D	217		4' x 10' x 24'
213'-10	15D	215		
226'-4	16D	212		
243'-0	16D	219		



4'-0 x 8'-0 x 24'-0 FOR 14B, 15B & 16B



4'-0 x 9'-0 x 24'-0 FOR 14C, 15C & 16C

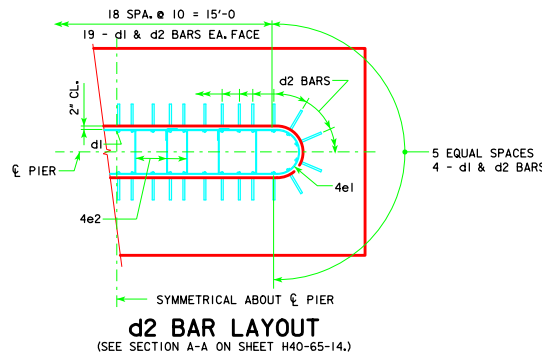


4'-0 x 10'-0 x 24'-0 FOR 14D, 15D & 16D

NOTE: THE REINFORCING STEEL QUANTITY IS TO BE INCLUDED ON THE SUMMARY QUANTITIES SHEET IN THE PLAN.
 NOTE: THE CONCRETE QUANTITY IS TO BE INCLUDED ON THE SUMMARY QUANTITIES SHEET IN THE PLAN.
 NOTE: THE PILE TYPE IS TO BE INCLUDED ON THE SUMMARY QUANTITIES SHEET IN THE PLAN.

FOOTING NOTES:

THESE FOOTINGS ARE DESIGNED AND DETAILED TO BE USED WITH THE CAP AND COLUMN DETAILS OF THE TEE PIERS AS SHOWN ON SHEET H40-65-14.
 BATTER PILES IN EXTERIOR ROWS 1/4 IN THE DIRECTION SHOWN.
 STEEL PILING USED AS POINT BEARING SHALL HAVE A MINIMUM DISTANCE OF APPROXIMATELY 10 FEET FROM BOTTOM OF FOOTING TO TOP OF BEARING ROCK. THE PILE LAYOUTS ARE SUCH THAT THE DISTANCE CENTER TO CENTER OF ADJACENT PILING SHALL NOT EXCEED 8'-0.
 PIER PILES SHALL BE DRIVEN TO VALUES SHOWN IN DESIGN PLANS.



d2 BAR LAYOUT (SEE SECTION A-A ON SHEET H40-65-14.)

NOTE: PU, STRENGTH I DESIGN LOAD (KIPS) IS NOT THE VALUE USED IN THE FIELD FOR DRIVING PILES.

FOOTING SIZE	REINFORCING STEEL (ONE FOOTING)			TOTAL WEIGHT (LB.)	STRUCTURAL CONCRETE (CY)	
	BAR	NO., SIZE & SPACING	LENGTH			
4' x 8' x 24'	d2	46 - #9 AS SHOWN	9'-1	1421	2942	28.4
	f1	24 - #5 @ 1'-0	7'-8	192		
	f2	8 - #5 @ 1'-0	23'-8	197		
	g1	27 - #6 @ 0'-10 1/2	7'-8	311		
	g2	13 - #8 @ 0'-7 1/2	23'-8	821		
4' x 9' x 24'	d2	46 - #9 AS SHOWN	9'-1	1421	3241	32.0
	f1	24 - #5 @ 1'-0	8'-8	217		
	f2	9 - #5 @ 1'-0	23'-8	222		
	g1	28 - #7 @ 0'-10	8'-8	496		
	g2	14 - #8 @ 0'-7 1/2	23'-8	885		
4' x 10' x 24'	d2	46 - #9 AS SHOWN	9'-1	1421	3581	35.6
	f1	24 - #5 @ 1'-0	9'-8	247		
	f2	10 - #5 @ 1'-0	23'-8	242		
	g1	28 - #8 @ 0'-10	9'-8	723		
	g2	15 - #8 @ 0'-8	23'-8	948		

LATEST REVISION DATE	 APPROVED BY BRIDGE ENGINEER	 STANDARD DESIGN - 40' ROADWAY, THREE SPAN BRIDGE PRETENSIONED PRESTRESSED CONCRETE BEAM BRIDGES SEPTEMBER, 2014	TEE PIER-HP10x57 SRL-2 STEEL PILE FOOTINGS 15° SKEW - H-25' TO 40'	H40-70-14