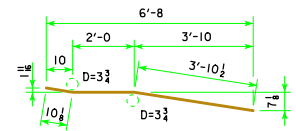


REINFORCING BAR LIST - ONE ABUT. WING

BAR	LOCATION	SHAPE	NO.	LENGTH	WEIGHT
5h1	HORIZONTAL BACK FACE	—	7	6'-8	49
5h3	HORIZONTAL TRAFFIC FACE	—	7	6'-9	49
5s1	VERTICAL BOTH FACES	—	16	5'-10	97
TOTAL (LBS.)					195

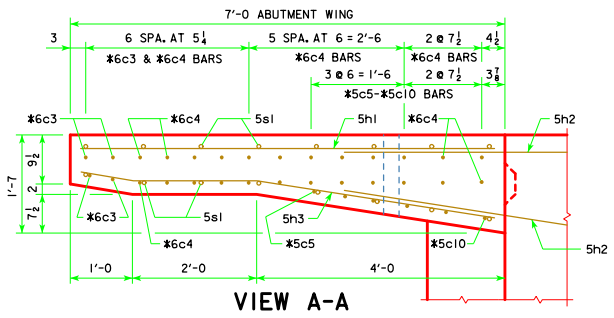


5h3
NOTE: ALL DIMENSIONS ARE OUT TO OUT. D = PIN DIAMETER.
BENT BAR DETAILS

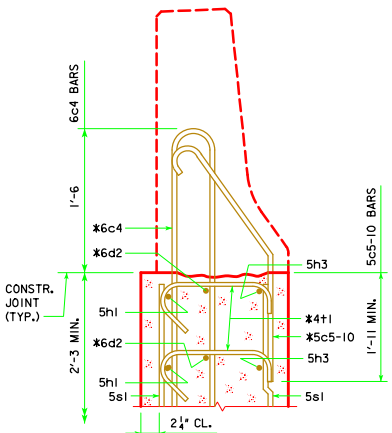
CONCRETE PLACEMENT SUMMARY

CONCRETE	TOTAL
ONE ABUTMENT WING	1.8
TOTAL (CU. YDS.)	1.8

NOTE:
REINFORCING STEEL QUANTITY AND CONCRETE QUANTITY ARE TO BE ADDED TO THE SUPERSTRUCTURE QUANTITIES SHOWN ELSEWHERE IN THESE PLANS.

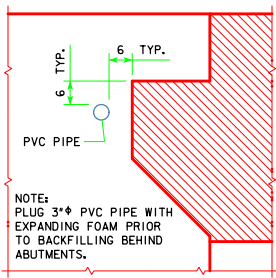


NOTE:
PLUG 3"Ø PVC PIPE WITH EXPANDING FOAM PRIOR TO BACKFILLING BEHIND ABUTMENTS.

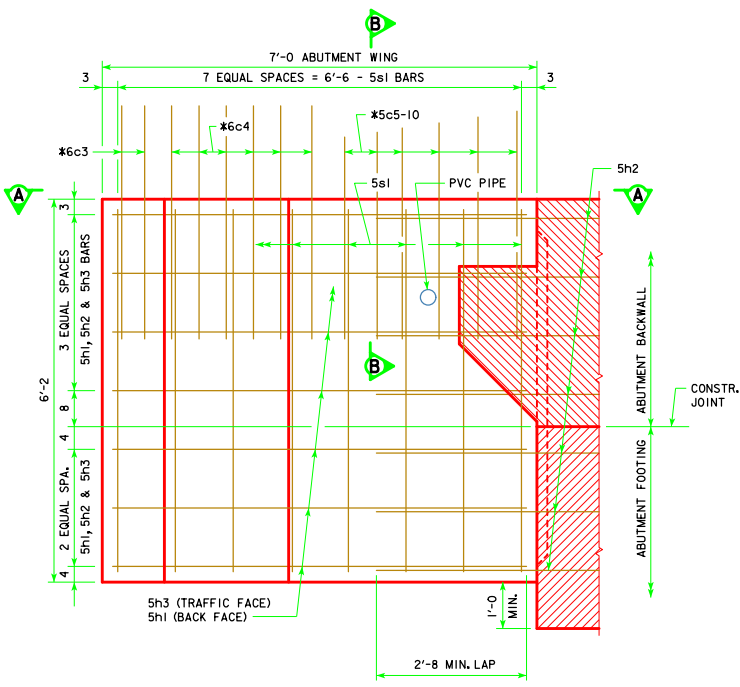


SECTION B-B

* BARRIER RAIL END SECTION BARS TO BE PLACED WITH ABUTMENT WING.
SEE END SECTION DETAILS IN THESE PLANS FOR DETAILS OF BARRIER RAIL END SECTION. REINFORCING BARS 6c3, 6c4, 5c5-10, 6d2 & 4t1 ARE INCLUDED IN THE SUPERSTRUCTURE QUANTITIES.



PVC PIPE LOCATION



ABUTMENT WING - ELEVATION VIEW

LATEST REVISION DATE
Thomas E. McQuinn
APPROVED BY BRIDGE ENGINEER

Iowa Department of Transportation
Highway Division
STANDARD DESIGN - 30' ROADWAY, SINGLE SPAN BRIDGE
PRETENSIONED PRESTRESSED CONCRETE BEAM BRIDGES
APRIL, 2012

WING DETAILS

H30S1-36-12