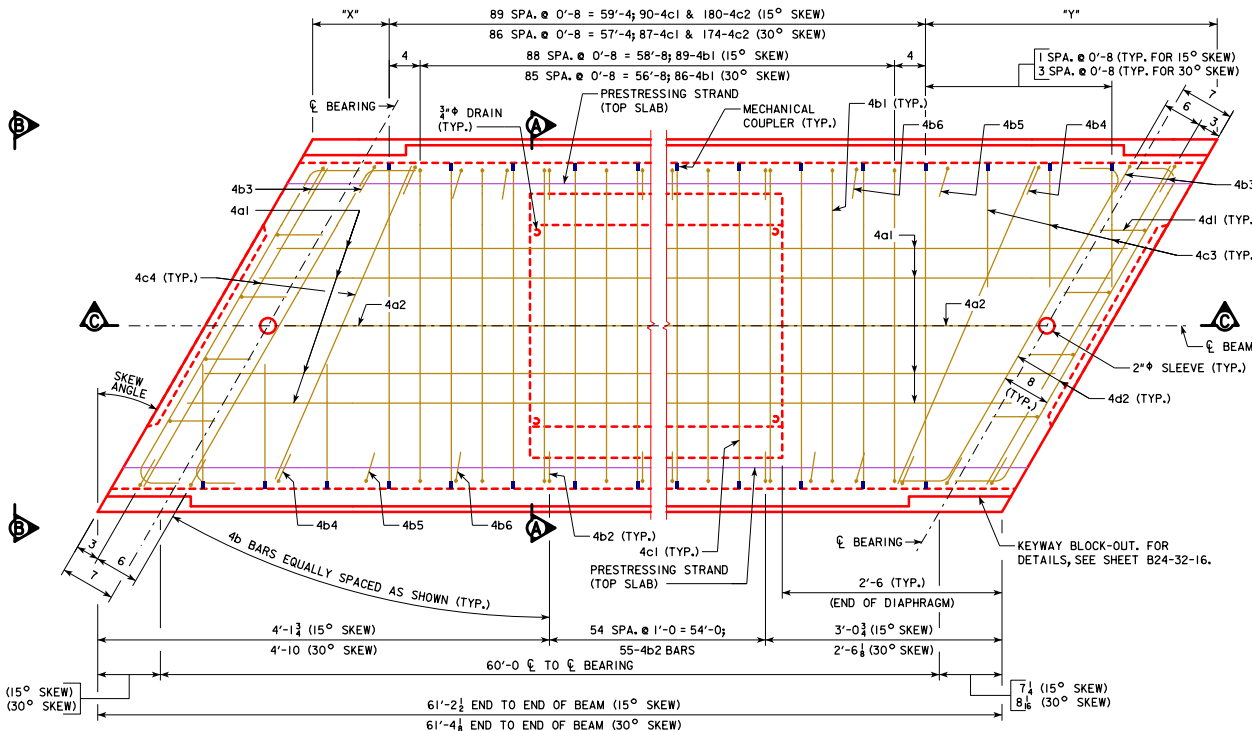


SECTION A-A

NOTE:
OMIT KEYWAY, MECHANICAL COUPLERS, AND 4c2 BARS ON EXTERIOR FACE OF EXTERIOR BEAMS.



PLAN

(30° SKEW SHOWN, 15° SKEW SIMILAR) (INTERIOR BEAM SHOWN, EXTERIOR BEAM SIMILAR)
(PRESTRESSING STRANDS IN BOTTOM SLAB AND 4c2 BARS NOT SHOWN FOR CLARITY)

TABLE OF DIMENSION DATA

BEAM LINE	15° SKEW		30° SKEW	
	x	*y*	*x*	*y*
A	2 7/8	1'-7 1/4	11	3'-1 1/4
B	3 1/2	1'-7	10 3/8	3'-1 1/2
C	4 3/8	1'-6 1/4	10 3/8	3'-1 1/2
D	5 1/4	1'-5 1/4	10	3'-2 1/4
E	6 1/4	1'-4 3/4	9 1/2	3'-2 3/4
F	7	1'-3 3/4	9 1/2	3'-2 3/4

NOTE:
FOR BEAM LINE DESIGNATIONS, SEE SHEET B24-06-16.

NOTES:
FOR VIEW B-B, SEE SHEET B24-41-16.
4a1 & 4a2 SHALL BE LAP SPLICED 1'-7" MINIMUM AT MIDSPAN.
FOR BEAM CHAMFER DETAILS, SEE SHEET B24-33-16.

LATEST REVISION DATE	
	STANDARD DESIGN - 24'-0 ROADWAY, SINGLE SPAN CONCRETE BOX BEAM BRIDGES
	DECEMBER, 2016
APPROVED BY BRIDGE ENGINEER <i>Thomas E. McQuill</i>	27' x 48' x 60'-0 PPCBB DETAILS 15° AND 30° SKEW
	B24-46-16