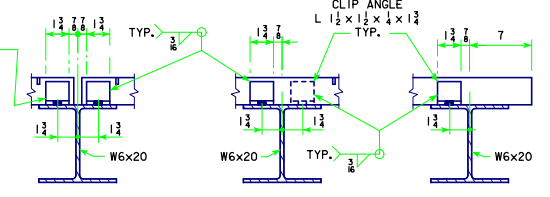
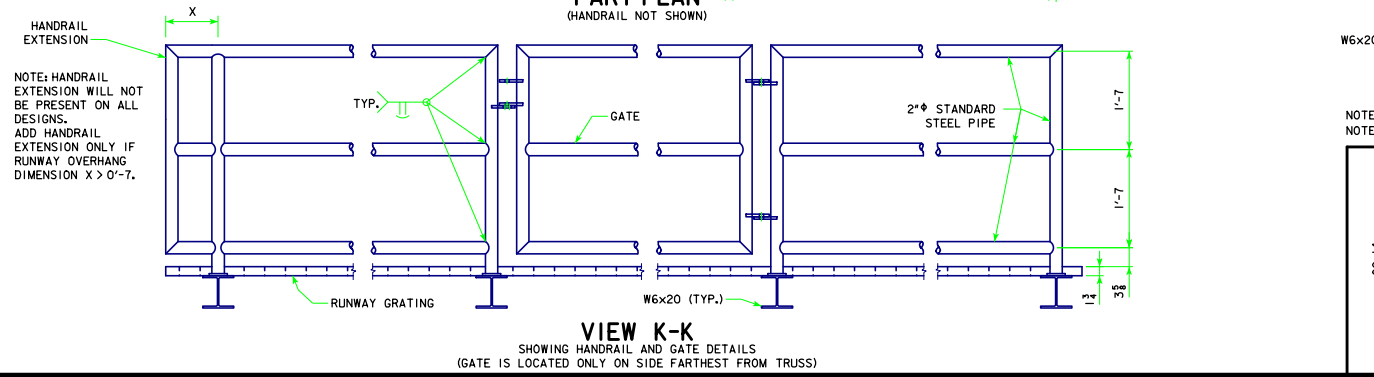
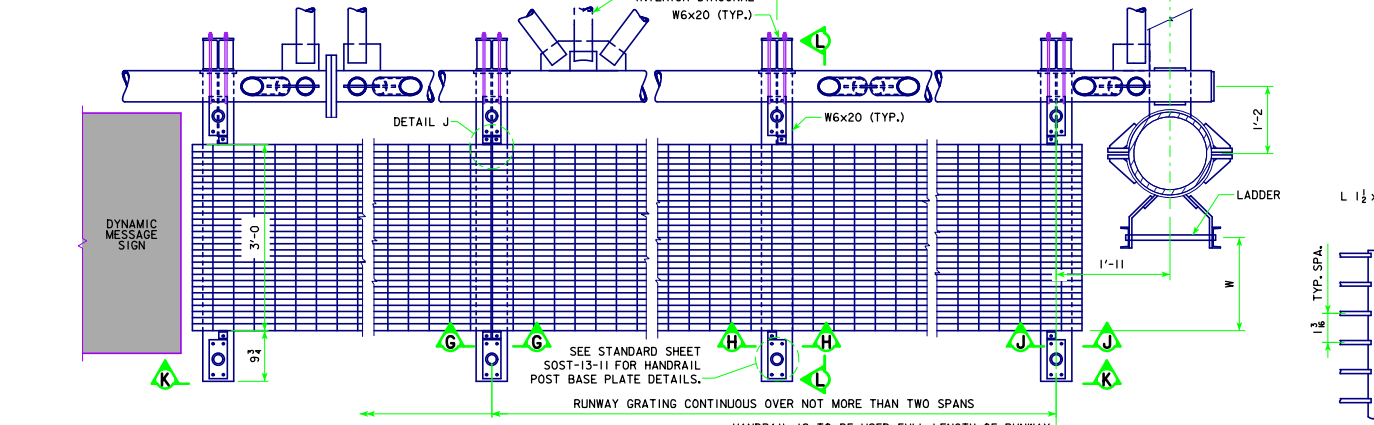
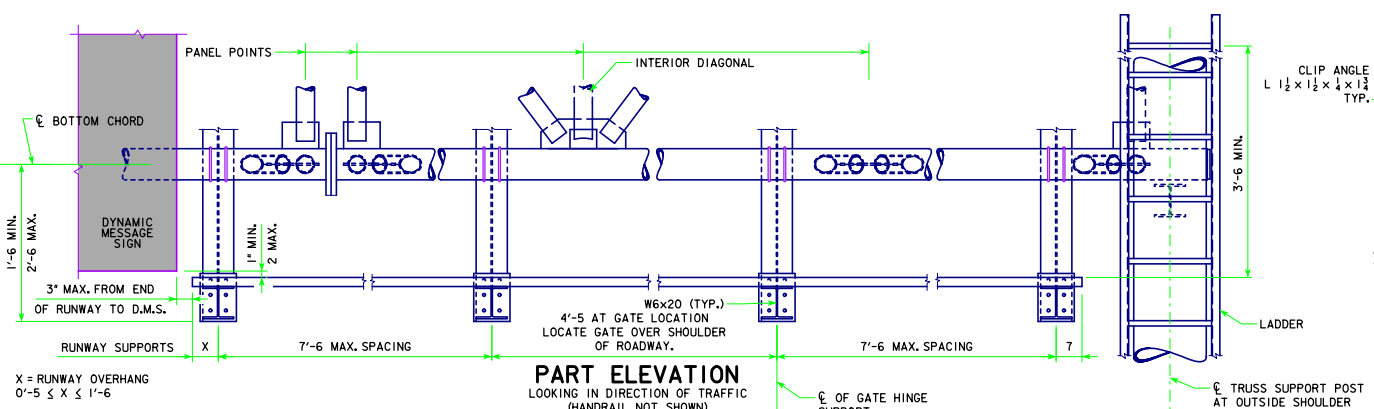


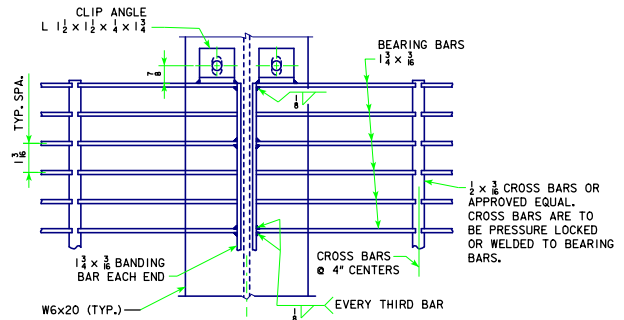
REVISION 09-14 - CHANGED TYPE AND GAGE OF HOLES IN W6x20 FOR CLIP-ANGLE BOLTS. STEELOVERHEADS\INTRUSS.DGN - SOST-12-11 - THIS SHEET ISSUED 03-13.



SECTION G-G SECTION H-H SECTION J-J

NOTES:
 DRILL $\frac{3}{8}$ " ϕ HOLE IN CLIP ANGLE AND $\frac{3}{8}$ " \times 1" SLOTTED HOLE IN W6x20 FOR $\frac{1}{2}$ " ϕ A325 GALVANIZED BOLT WITH WASHERS, NUT, AND JAM NUT. ADJUST CLIP SO GRATING BEARS ON BEAM.
 THE GALVANIZED STEEL BAR GRATING INCLUDING BEARING BAR, CROSS BARS, AND BANDING BARS SHALL COMPLY WITH THE REQUIREMENTS OF ASTM A1011 TYPE 2.

DIMENSION TABLE		
SPAN	TRUSS SUPPORT POST	W
50' - 100'	HSS 14.000 \times 0.500	1'-10 $\frac{1}{4}$ "
105' - 130'	HSS 16.000 \times 0.500	1'-8 $\frac{11}{16}$ "



DETAIL J

NOTE: SEE STANDARD SHEET SOST-13-11 FOR SECTION L-L.
 NOTE: SEE STANDARD SHEET SOST-15-11 FOR LADDER DETAILS.

09-14 LATEST REVISION DATE <i>Thomas E. McQuinn</i> APPROVED BY BRIDGE ENGINEER		
	STANDARD DESIGN STEEL OVERHEAD SIGN TRUSS SEPTEMBER, 2011	
	DMS RUNWAY DETAILS	SOST-12-11

50'-130' SPANS