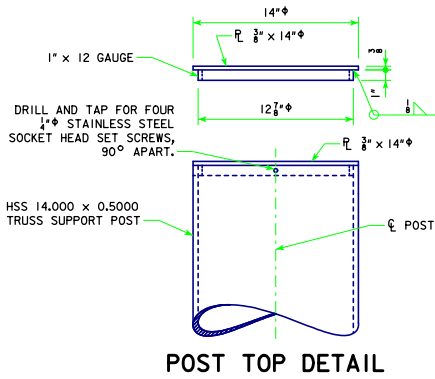
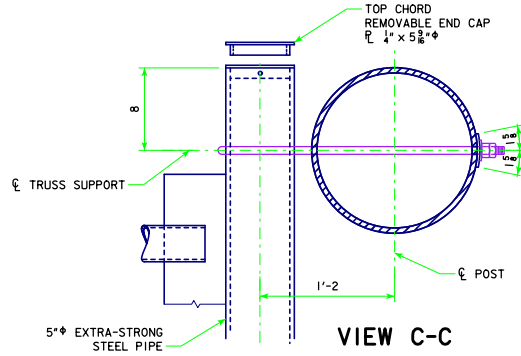


REVISION: 09-14 - MODIFIED DETAIL OF INTERIOR DIAGONAL AT END OF TRUSS. STEEL OVERHEAD SIGN TRUSS.DGN - SOST-09-11 - THIS SHEET ISSUED 09-11

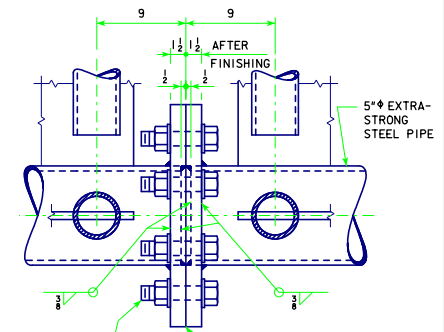
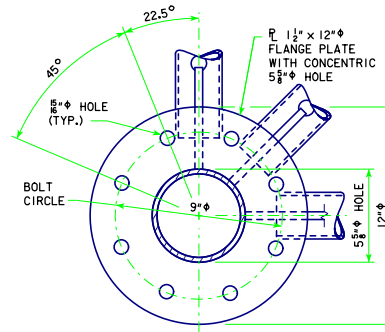


POST TOP DETAIL



VIEW C-C

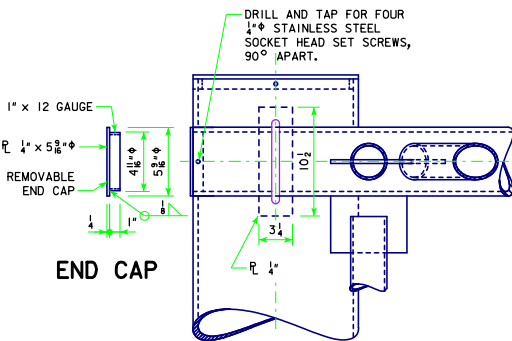
SOME HIDDEN LINES NOT SHOWN FOR CLARITY



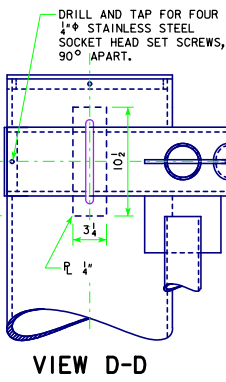
CHORD SPLICE

7/8" x 4 1/4" A325 GALVANIZED BOLT WITH WASHERS AND NUT (TYP), 32 BOLTS, 64 WASHERS, AND 32 NUTS REQUIRED PER TRUSS SPLICE. PROVIDE A WASHER UNDER EACH BOLT HEAD AND EACH NUT. TENSION GALVANIZED STEEL FASTENERS BY TURN-OF-NUT METHOD.

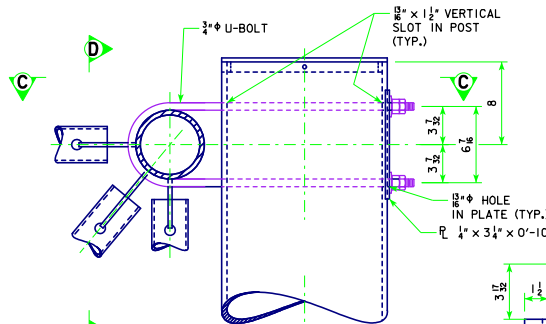
IF NECESSARY, PLANE ABUTTING FACES TO ENSURE COMPLETE CONTACT.
NOTE: SECURE PROPER ALIGNMENT AFTER FINISHING, THEN WELD FLANGE PLATES TO CHORD MEMBERS.



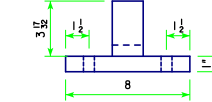
END CAP



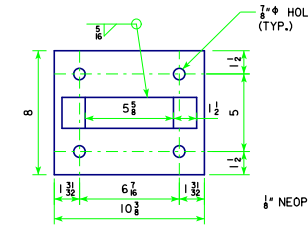
VIEW D-D



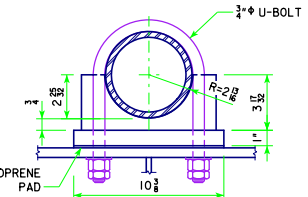
DETAIL F



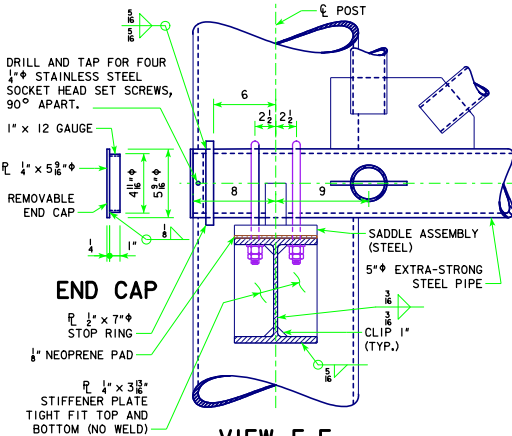
SADDLE END VIEW



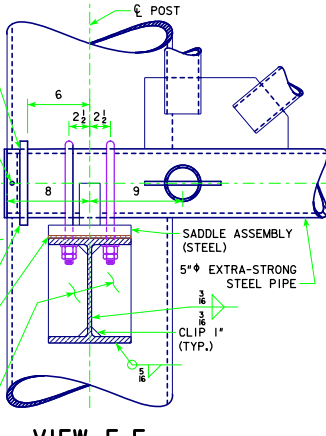
SADDLE PLAN VIEW



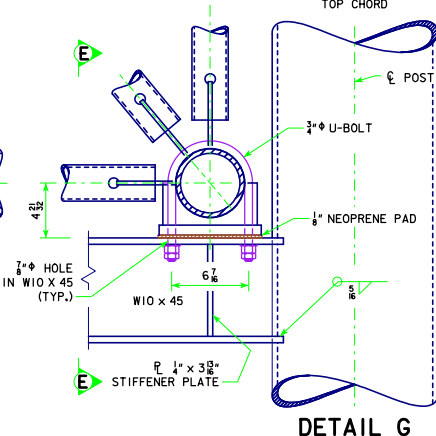
SADDLE SIDE VIEW



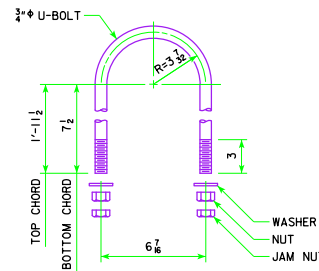
END CAP



VIEW E-E



DETAIL G



U-BOLT DETAIL

NOTE: SEE STANDARD SHEET SOST-06-11 FOR LOCATION OF DETAILS F AND G.

09-14 LATEST REVISION DATE <i>Norman E. Mc Donald</i> APPROVED BY BRIDGE ENGINEER	
	STANDARD DESIGN STEEL OVERHEAD SIGN TRUSS SEPTEMBER, 2011
	TRUSS SUPPORT AND CHORD SPLICE DETAILS 50'-100' SPANS
SOST-09-11	