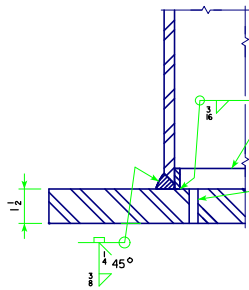


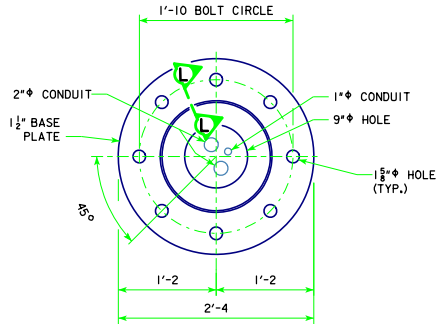
REVISION: 11-13 - CORRECTED BASE PLATE THICKNESS IN SECTION K-K. ROADSDMSUPPORT.DGN - RDMS-04-13 - THIS SHEET ISSUED 04-13.



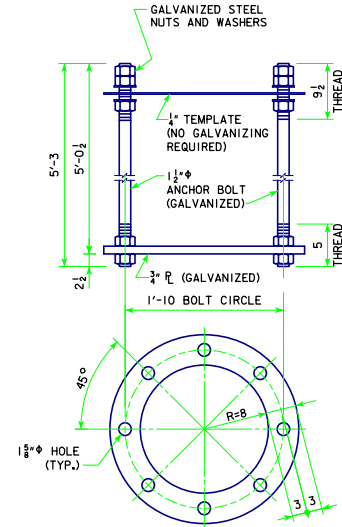
**SECTION L-L**

1/4" x 1" BACKING RING IS TO BE CONTINUOUSLY WELDED TO THE BASE PLATE. THE BACKING RING SHALL BE ONE PIECE OR MADE CONTINUOUS BY A COMPLETE JOINT PENETRATION WELD. SEAL WITH LIGHT GRAY NON-SAG URETHANE CAULK AFTER GALVANIZING.

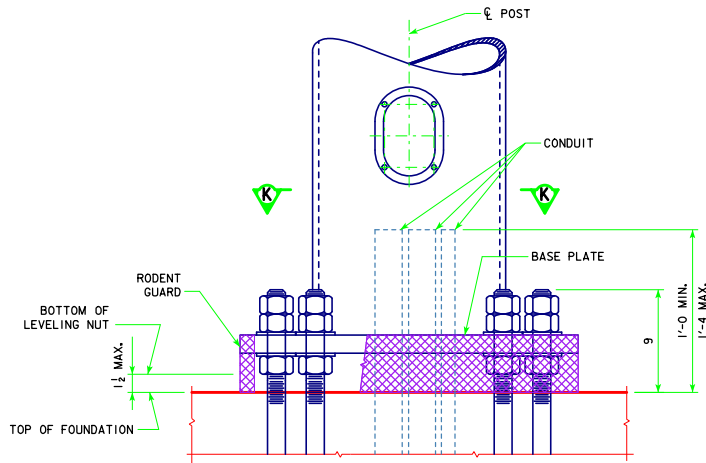
3/8" GALVANIZING VENT HOLE. GALVANIZING VENTS SHALL BE LOCATED IN THE BASE PLATE IF NEEDED. NO VENT HOLE SHALL BE DRILLED THROUGH THE BACKING RING OR HSS POST. NO VENT HOLE IN BASE PLATE SHALL BE CLOSER THAN 3/8" TO FILLET WELD.



**SECTION K-K**



**ANCHOR BOLT ASSEMBLY**




**POST BASE DETAIL**  
(SHOWING THE RODENT GUARD)

THE RODENT GUARD SHALL BE PLACED AROUND THE BASE PLATE.

THE RODENT GUARD IS STAINLESS STEEL STANDARD GRADE WIRE CLOTH, 1/4" MAXIMUM OPENING WITH A MINIMUM WIRE DIAMETER OF AWG NO. 16 WITH A MINIMUM 2" LAP.

SECURE TO BASE PLATE AFTER ERECTION WITH 3/8" STAINLESS STEEL BANDING. THE RODENT GUARD SHALL NOT EXTEND ABOVE THE TOP OF THE BASE PLATE.

NOTE: SEE STANDARD SHEET RDMS-05-13 FOR ANCHOR BOLT NOTES.

11-13 LATEST REVISION DATE  <i>Norman E. Mc Donnell</i> APPROVED BY BRIDGE ENGINEER	 <b>Iowa Department of Transportation</b> Highway Division
	STANDARD DESIGN <b>ROADSIDE DYNAMIC MESSAGE SIGN (DMS) SUPPORT</b> APRIL, 2013
	<b>SUPPORT POST BASE DETAILS</b>
<b>RDMS-04-13</b>	