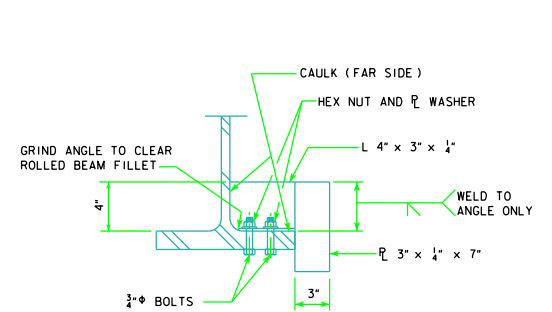


FLANGE DEFLECTOR DETAILS

BRIDGE LENGTH	WEIGHT (lb.) PER FLANGE DEFLECTOR
160'-0"	6.0
180'-0"	6.0
200'-0"	6.2
220'-0"	6.4
240'-0"	6.4
260'-0"	7.5
280'-0"	7.5
300'-0"	7.5
320'-0"	7.5
340'-0"	7.6

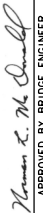

INCLUDES WEIGHT OF PLATES, ANGLES, BOLTS, NUTS AND WASHERS.



SECTION A-A

NOTES:

1. FLANGE DEFLECTORS ARE REQUIRED ON THE OUTSIDE OF THE EXTERIOR BEAM. LOCATION AND NUMBER OF FLANGE DEFLECTORS DETERMINED BY FINAL DESIGNER.
2. WEIGHTS TABULATED ON THIS SHEET ARE INCIDENTAL TO THE WEIGHT OF STRUCTURAL STEEL.

LATEST REVISION DATE	 APPROVED BY BRIDGE ENGINEER	 <b>Iowa Department of Transportation</b> Highway Division	
		STANDARD DESIGN - 40' ROADWAY, 3 SPAN BRIDGES <b>ROLLED STEEL BEAM BRIDGES</b> JUNE, 2010	
		FLANGE DEFLECTOR DETAILS	RS40-083-10