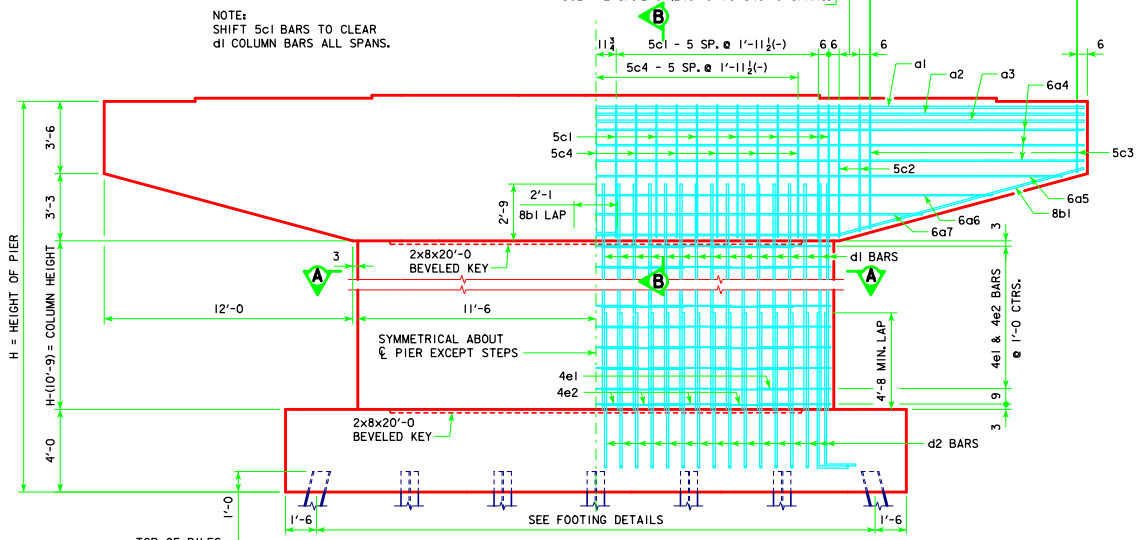


CAP PLAN

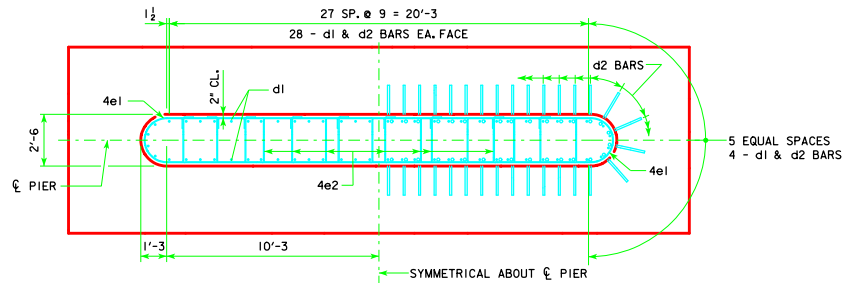
160'-0" TO 240'-0" SPANS 5c3 - 10 SP. @ 1'-0" = 10'-0"
 260'-0" TO 280'-0" SPANS 5c3 - 13 SP. @ 9 1/4"(-) = 10'-0"
 300'-0" TO 340'-0" SPANS 5c3 - 17 SP. @ 7(+)= 10'-0"

5c2 - 1 SP. @ 1'-0" (160'-0" TO 220'-0" SPANS)
 5c2 - 2 SP. @ 6" (240'-0" TO 340'-0" SPANS)

NOTE:
 SHIFT 5c1 BARS TO CLEAR
 d1 COLUMN BARS ALL SPANS.

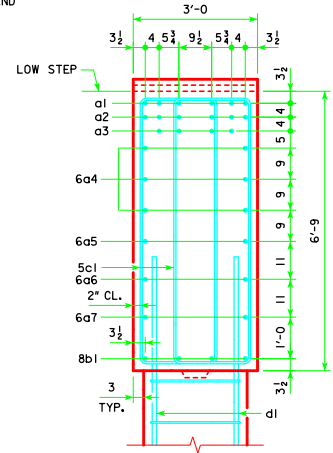


FRONT ELEVATION

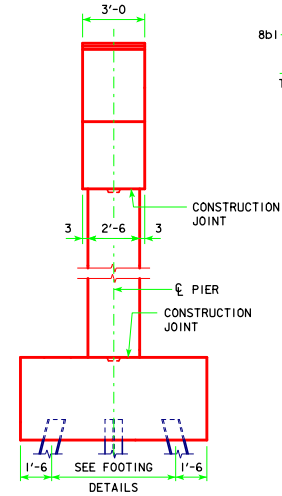


SECTION A-A

NOTE:
 ANCHOR BOLTS REQUIRED FOR FIXED
 PIER BEARINGS ONLY. FOR BOLT AND
 BEARING SIZES, SEE RS40-093-14,
 RS40-094-14 OR RS40-095-14.



SECTION B-B



END ELEVATION

LATEST REVISION DATE APPROVED BY BRIDGE ENGINEER <i>Thomas E. Mc Donnell</i>		
	STANDARD DESIGN - 40' ROADWAY, 3 SPAN BRIDGES ROLLED STEEL BEAM BRIDGES OCTOBER, 2014	
	TEE PIER CAP & COLUMN DETAILS 30° SKEW	RS40-146-10