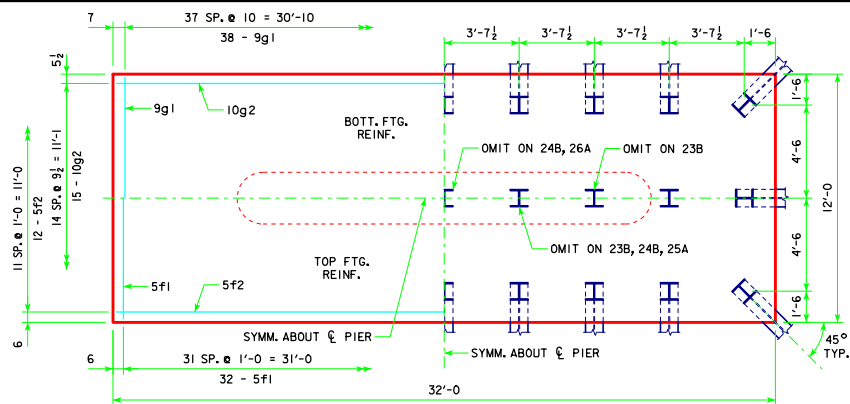
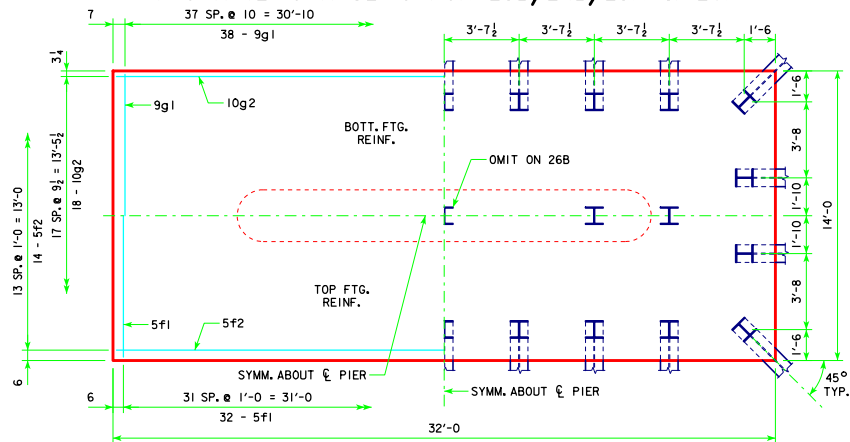


4'-0 x 12'-0 x 30'-0 FOR 20B, 21B, 22A, 23A & 24A



4'-0 x 12'-0 x 32'-0 FOR 23B, 24B, 25A & 26A



4'-0 x 14'-0 x 32'-0 FOR 26B & 27A

NOTE:
SEE SHEET RS40-118-14 FOR FOOTING NOTES.

LATEST REVISION DATE <i>Thomas E. Mc Donald</i> APPROVED BY BRIDGE ENGINEER	
	STANDARD DESIGN - 40' ROADWAY, 3 SPAN BRIDGES ROLLED STEEL BEAM BRIDGES OCTOBER, 2014
TEE PIER-HPI0x57 SRL-1 STEEL PILE FOOTINGS <small>0° SKEW - SHEET 3</small>	RS40-120-14