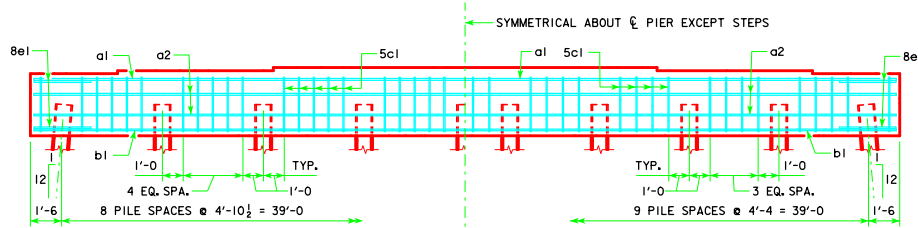
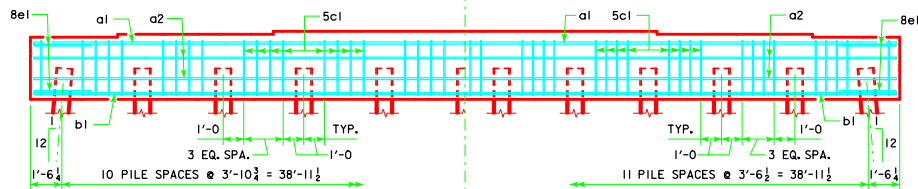


TYPICAL PLAN



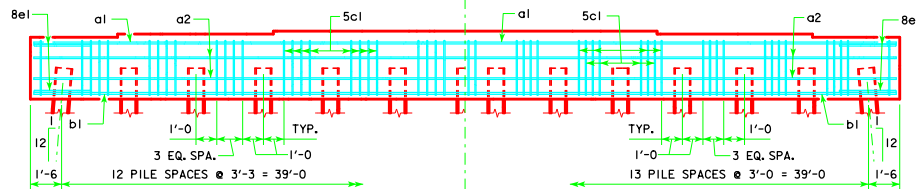
9 PILE BENT

10 PILE BENT



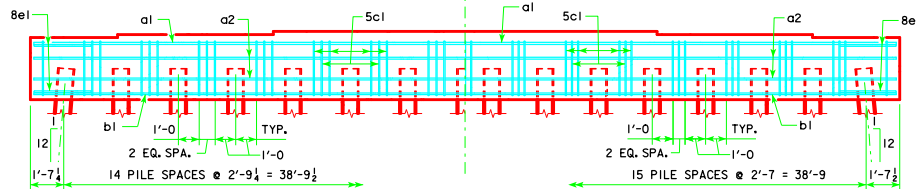
11 PILE BENT

12 PILE BENT



13 PILE BENT

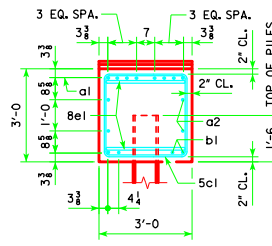
14 PILE BENT



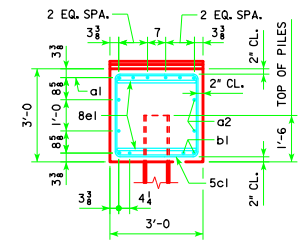
15 PILE BENT

16 PILE BENT

NOTE:
 THE HEIGHT OF THE STEPS ON THE BRIDGE SEAT IS EQUAL TO THE DIFFERENCE IN ELEVATIONS OF THE TOP OF SLAB AT ADJACENT BEAMS ALONG CL PIER.
 ANCHOR BOLTS REQUIRED FOR FIXED PIER BEARINGS ONLY. FOR BOLT AND BEARING SIZES, SEE RS40-093-14, RS40-094-14 OR RS40-095-14.



VIEW A-A
FOR 9 PILE BENT



VIEW A-A
FOR 10, 11, 12, 13, 14, 15 & 16 PILE BENTS

LATEST REVISION DATE

Thomas E. McQuinn
APPROVED BY BRIDGE ENGINEER

IOWADOT Highway Division

STANDARD DESIGN - 40' ROADWAY, 3 SPAN BRIDGES
ROLLED STEEL BEAM BRIDGES

OCTOBER, 2014

PILE BENT PIERS

RS40-100-14

10° SKEW