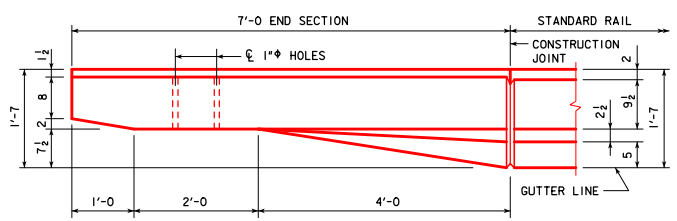
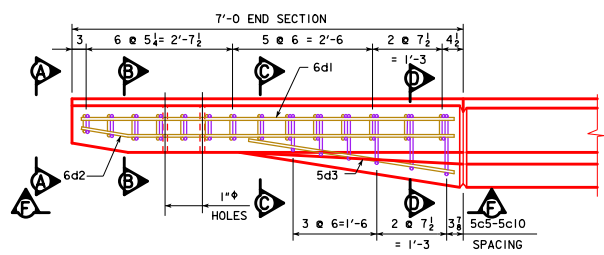


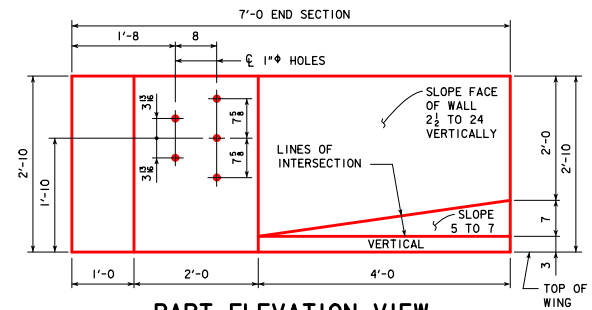
REVISED 03-2016 - REFERENCE TO "1" PVC PIPE" WAS CHANGED FROM "1" PLASTIC CONDUIT".



**PART PLAN VIEW**

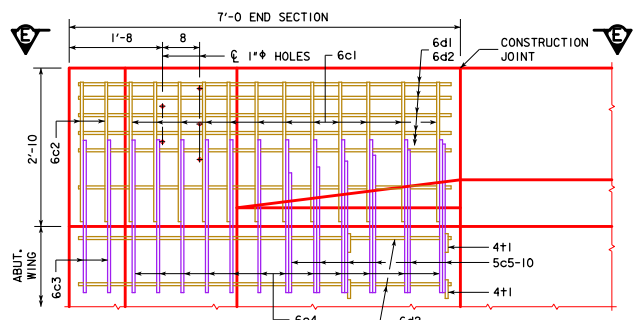


**PART VIEW E-E**

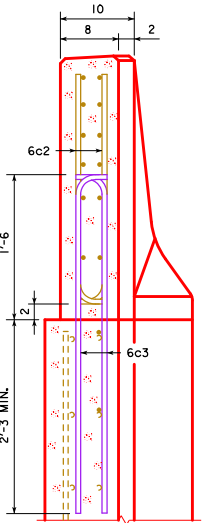


**PART ELEVATION VIEW**

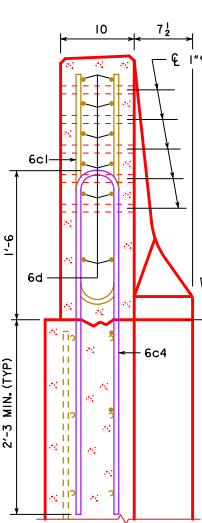
PROVIDE 5 HOLES FORMED WITH 1" PVC PIPE. COST TO BE INCLUDED IN PRICE BID FOR CONCRETE BARRIER RAILING.



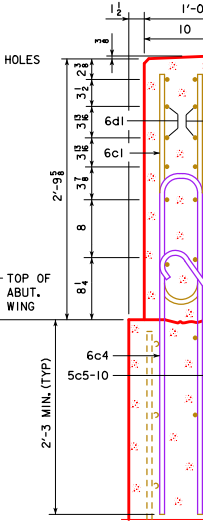
**PART VIEW F-F**



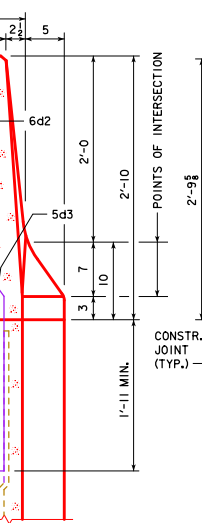
**VIEW A-A**



**SECTION B-B**



**SECTION C-C**



**SECTION D-D**

**POINTS OF INTERSECTION**

NOTE: 4+1 PLACEMENT - 2 BARS EACH LEVEL OF 6d2 IN WING FOOTING.

NOTE: CONSTRUCTION JOINT BETWEEN TOP OF WING AND BARRIER RAIL IS ROUGHENED CONCRETE.

NOTE: THE 10" RADIUS AND 1/2" RADIUS ARE TYPICAL AND SHALL BE USED WHEN CONSTRUCTING THE CORNERS FOR VIEW A-A, SECTION B-B, SECTION C-C AND SECTION D-D.

NOTE: THE 6c4, 6c3, 5c5-10, 2-6d2 AND 4+1 BARS ARE TO BE PLACED WITH THE ABUTMENT WING. THE DETAILS FOR PLACEMENT ARE SHOWN ON THE WING ABUTMENT SHEET.

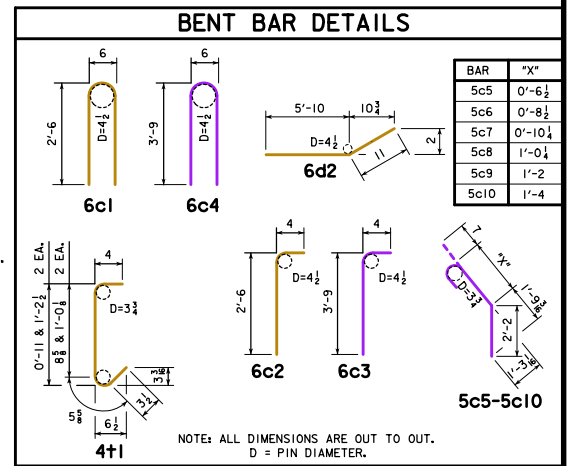
NOTE: DASHED LINES BELOW THE TOP OF WING ARE THE ABUTMENT WING REINFORCING STEEL. SEE WING ABUTMENT SHEET FOR PLACEMENT.

EPOXY COATED REINF. STEEL - ONE END SECT.					
BAR	LOCATION	SHAPE	NO.	LENGTH	WEIGHT
6c1	RAIL, VERTICAL	□	12	5'-6"	99
6c2	RAIL, VERTICAL	┘	4	2'-10"	17
6d1	RAIL, HORIZONTAL	—	6	6'-8"	60
6d2	RAIL, HORIZONTAL	—	8	6'-9"	81
5d3	RAIL, HORIZONTAL	—	1	3'-9"	4
4+1	RAIL, ABUTMENT WING TIE BARS	┘	4	VARIES	5
EPOXY REINF. TOTAL WEIGHT (LBS.)					266

STAINLESS STEEL REINF. STEEL - ONE END SECT.					
BAR	LOCATION	SHAPE	NO.	LENGTH	WEIGHT
6c3	RAIL, VERTICAL	┘	4	4'-1"	25
6c4	RAIL, VERTICAL	┘	12	8'-0"	144
5c5-10	RAIL, VERTICAL	┘	6	VARIES	23
STAINLESS STEEL TOTAL WEIGHT (LBS.)					192

NOTE: REINFORCING STEEL QUANTITIES ARE INCLUDED ON THE SUMMARY QUANTITIES SHEET.

CONCRETE PLACEMENT SUMMARY		
SECTION	TOTAL	
BARRIER RAIL ONE END SECTION	0.65 CU. YD.	



LATEST REVISION DATE: 03-2016

APPROVED BY BRIDGE ENGINEER: *Thomas E. McQuill*

**IOWADOT** Highway Division

STANDARD DESIGN - 40' ROADWAY, 3 SPAN BRIDGES

**CONTINUOUS CONCRETE SLAB BRIDGES**

JULY, 2014

**BARRIER RAIL END SECTION**      **J40-47-14**