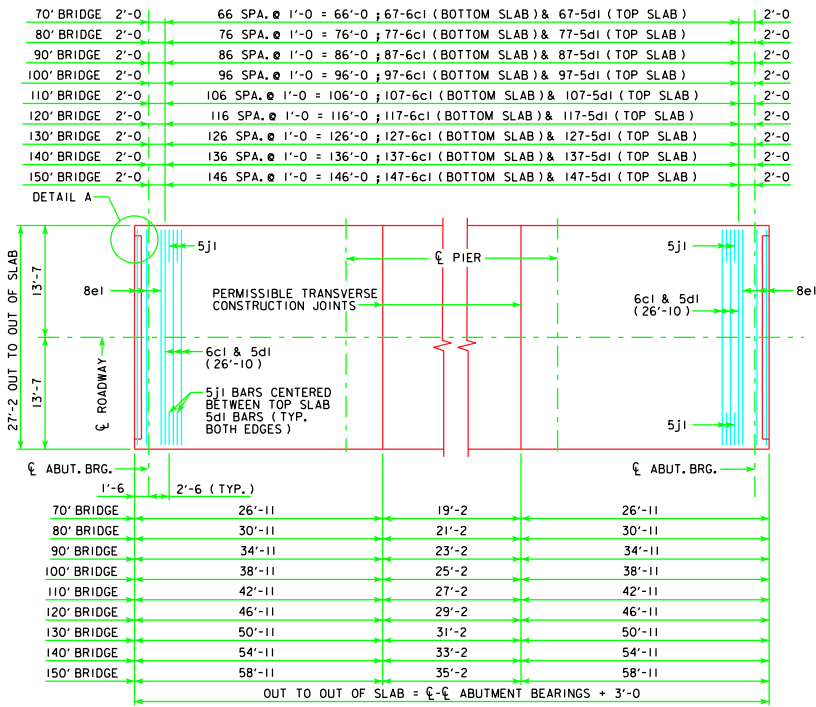
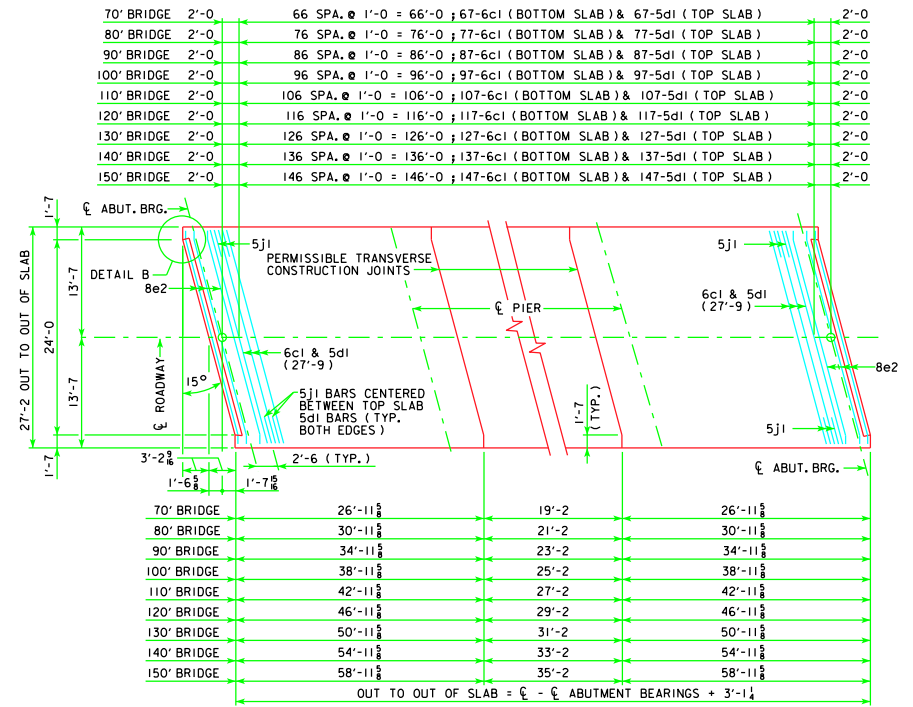


REVISED 12-08 - REVISED PAVING NOTCH, ADDED DETAIL A AND ADDED DETAIL B. ADDED TEMPORARY PAVING BLOCK DETAIL.

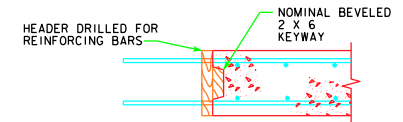


0° SKEW

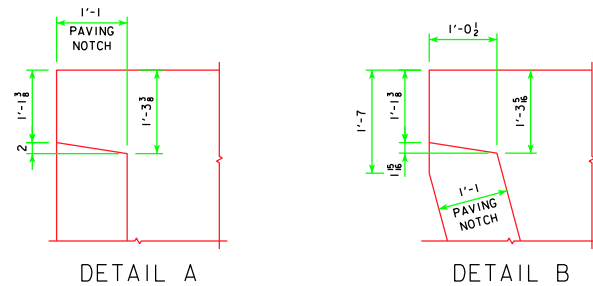


15° SKEW

TRANSVERSE REINFORCING STEEL LAYOUT

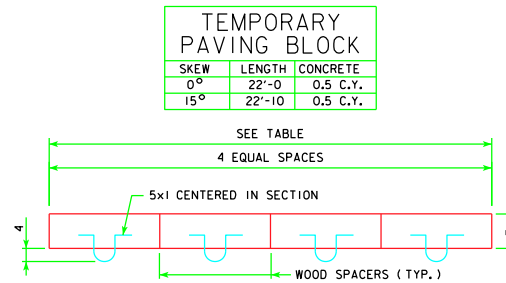


TRANSVERSE CONSTRUCTION JOINT



DETAIL A

DETAIL B



TEMPORARY PAVING BLOCK DETAIL

NOTE: TEMPORARY PAVING BLOCK TO BE USED WITH PAVED APPROACHES ONLY. LINE NOTCH WITH TAR PAPER BEFORE PLACING TEMPORARY PAVING BLOCK.

TEMPORARY PAVING BLOCK		
SKEW	LENGTH	CONCRETE
0°	22'-0"	0.5 C.Y.
15°	22'-10"	0.5 C.Y.

LATEST REVISION DATE	 APPROVED BY BRIDGE ENGINEER	 <b>Iowa Department of Transportation</b> Highway Division	
		STANDARD DESIGN - 24' ROADWAY, 3 SPAN BRIDGES <b>CONTINUOUS CONCRETE SLAB BRIDGES</b> NOVEMBER, 2006	
		SUPERSTRUCTURE DETAILS ALL BRIDGES	J24-21-06

0° & 15° SKEW