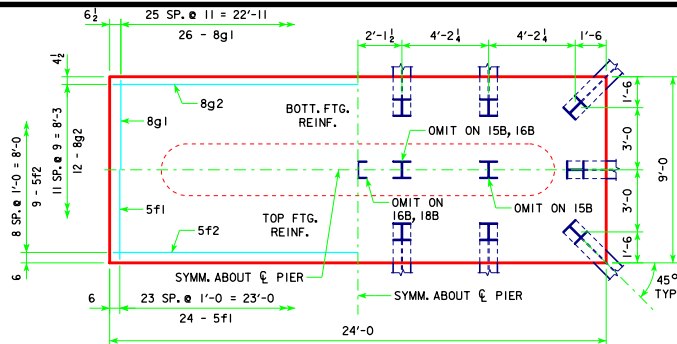
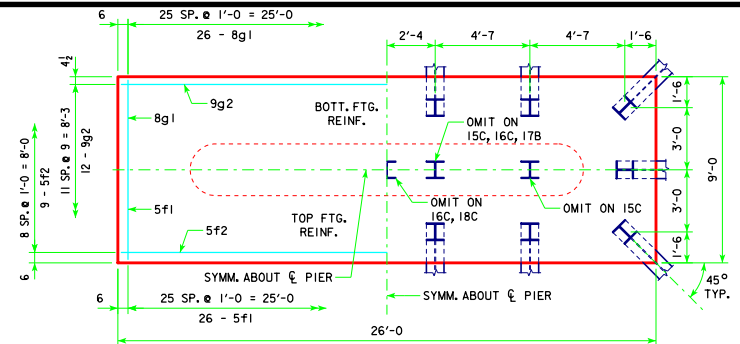


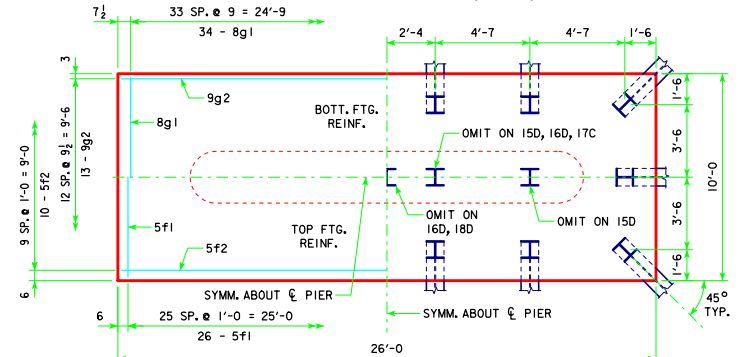
TYPICAL SECTION



4'-0 x 9'-0 x 24'-0 FOR 15B, 16B & 18B



4'-0 x 9'-0 x 26'-0 FOR 15C, 16C, 17B & 18C



4'-0 x 10'-0 x 26'-0 FOR 15D, 16D, 17C & 18D

FOOTING NOTES:

THESE FOOTINGS ARE DESIGNED AND DETAILED TO BE USED WITH THE CAP AND COLUMN DETAILS OF THE TEE PIERS AS SHOWN ON SHEET H44-58-14.

BATTER PILES IN EXTERIOR ROWS 1/4 IN THE DIRECTION SHOWN.

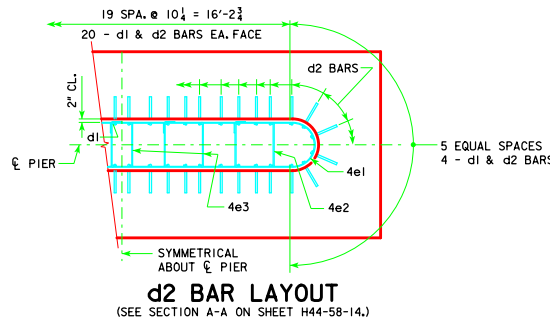
STEEL PILING USED AS POINT BEARING SHALL HAVE A MINIMUM DISTANCE OF APPROXIMATELY 10 FEET FROM BOTTOM OF FOOTING TO TOP OF BEARING ROCK. THE PILE LAYOUTS ARE SUCH THAT THE DISTANCE CENTER TO CENTER OF ADJACENT PILING SHALL NOT EXCEED 8'-0.

PIER PILES SHALL BE DRIVEN TO VALUES SHOWN IN DESIGN PLANS.

- NOTE: THE REINFORCING STEEL QUANTITY IS TO BE INCLUDED ON THE SUMMARY QUANTITIES SHEET IN THE PLAN.
- NOTE: THE CONCRETE QUANTITY IS TO BE INCLUDED ON THE SUMMARY QUANTITIES SHEET IN THE PLAN.
- NOTE: THE PILE TYPE IS TO BE INCLUDED ON THE SUMMARY QUANTITIES SHEET IN THE PLAN.

H IN FT.	CL - CL ABUT. BRG.	PILING (HP10x57)		FOOTING SIZE
		NO. & LAYOUT	① LRFD PU, STRENGTH I DES. BRG. (KIPS)	
25 TO 27	201'-4	15B	217	4' x 9' x 24'
		16B	210	
		16B	220	
28 TO 30	201'-4	18B	213	4' x 9' x 26'
		15C	215	
		16C	209	
31 TO 33	201'-4	16C	218	4' x 9' x 26'
		17B	213	
		18C	213	
34 TO 36	201'-4	15D	219	4' x 10' x 26'
		16D	212	
		17C	213	
37 TO 40	201'-4	16D	216	4' x 10' x 26'
		17C	217	
		18D	217	

FOOTING SIZE	REINFORCING STEEL (ONE FOOTING)				TOTAL WEIGHT (LB.)	STRUCTURAL CONCRETE (CY)
	BAR	NO., SIZE & SPACING	LENGTH	WEIGHT (LB.)		
4' x 9' x 24'	d2	48 - #9 AS SHOWN	9'-1	1482	3281	32.0
	f1	24 - #5 @ 1'-0	8'-8	217		
	f2	9 - #5 @ 1'-0	23'-8	622		
	g1	22 - #8 @ 0'-9 1/2	8'-8	602		
	g2	23 - #8 @ 0'-9 1/2	23'-8	758		
4' x 9' x 26'	d2	48 - #9 AS SHOWN	9'-1	1482	3607	34.7
	f1	26 - #5 @ 1'-0	8'-8	235		
	f2	9 - #5 @ 1'-0	25'-8	241		
	g1	22 - #8 @ 0'-9	8'-8	602		
	g2	25 - #8 @ 0'-9	25'-8	1047		
4' x 10' x 26'	d2	48 - #9 AS SHOWN	9'-1	1482	4024	38.5
	f1	26 - #5 @ 1'-0	9'-8	262		
	f2	10 - #5 @ 1'-0	25'-8	268		
	g1	34 - #8 @ 0'-9	8'-8	878		
	g2	13 - #9 @ 0'-9 1/2	25'-8	1134		



d2 BAR LAYOUT (SEE SECTION A-A ON SHEET H44-58-14.)

① NOTE: PU, STRENGTH I DESIGN LOAD (KIPS) IS NOT THE VALUE USED IN THE FIELD FOR DRIVING PILES.

NOTE: d = PIN DIAMETER. DIMENSIONS ARE OUT TO OUT.

LATEST REVISION DATE	 APPROVED BY BRIDGE ENGINEER	 STANDARD DESIGN - 44' ROADWAY, THREE SPAN BRIDGE PRETENSIONED PRESTRESSED CONCRETE BEAM BRIDGES SEPTEMBER, 2014	H44-63-14