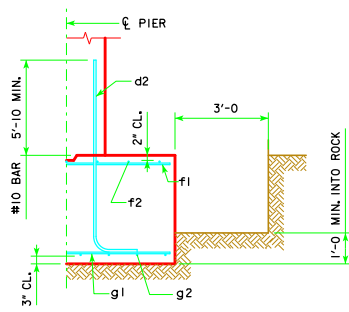
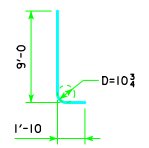


REVISED 04-12 - EXCAVATION LIMIT WAS CHANGED TO 3'-0".

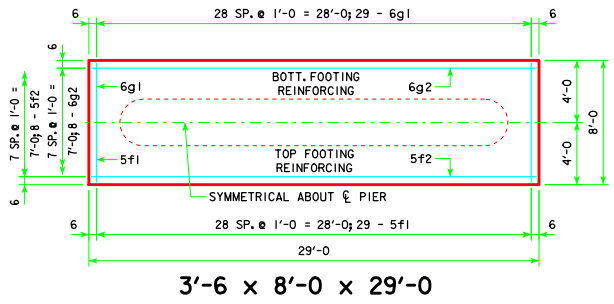


TYPICAL SECTION

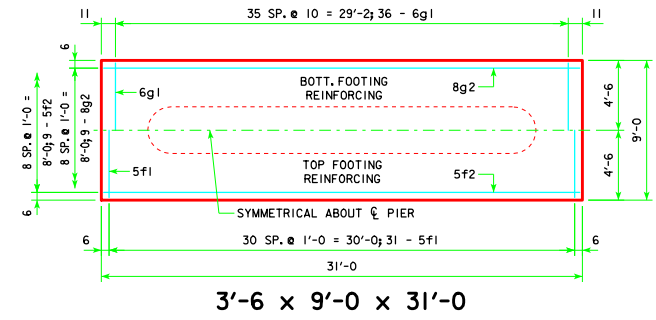
H IN FT.	CL - CL ABUT. BRG.	FOOTING SIZE
16 TO 18	138'-10	3'-6 x 8' x 29'
	151'-4	
	163'-10	
	176'-4	
	188'-10	
19 TO 21	201'-4	3'-6 x 8' x 31'
	213'-10	
	226'-4	
	239'-0	
	251'-6	
22 TO 24	138'-10	3'-6 x 8' x 29'
	151'-4	
	163'-10	
	176'-4	
	188'-10	
25 TO 27	201'-4	3'-6 x 8' x 31'
	213'-10	
	226'-4	
	239'-0	
	251'-6	



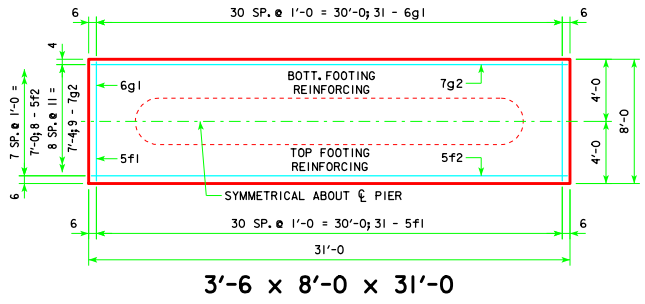
d2
NOTE: D = PIN DIAMETER.
DIMENSIONS ARE OUT TO OUT.



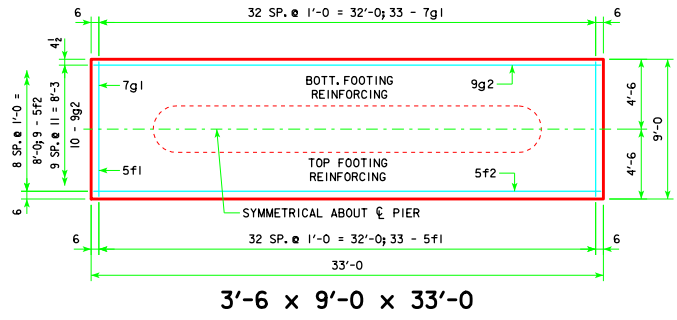
3'-6 x 8'-0 x 29'-0



3'-6 x 9'-0 x 31'-0

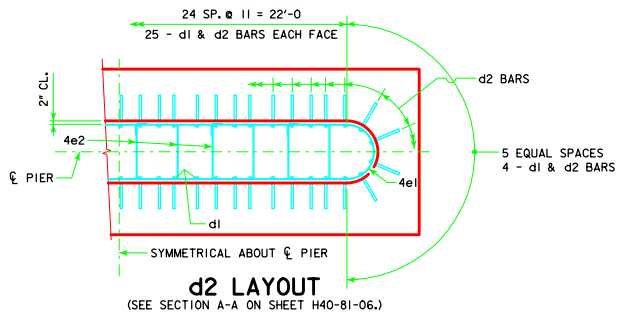


3'-6 x 8'-0 x 31'-0



3'-6 x 9'-0 x 33'-0

FOOTING SIZE	REINFORCING STEEL (ONE FOOTING)				STRUCTURAL CONCRETE (CY)	
	BAR	NO., SIZE & SPACING	LENGTH	WEIGHT (LB.)		
3'-6 x 8' x 29'	d2	58 - #10 AS SHOWN	10'-10	2704	3853	30.1
	f1	29 - #5 @ 1'-0	7'-8	232		
	f2	8 - #5 @ 1'-0	28'-8	239		
	g1	29 - #6 @ 1'-0	7'-8	334		
	g2	8 - #6 @ 1'-0	28'-8	344		
3'-6 x 8' x 31'	d2	58 - #10 AS SHOWN	10'-10	2704	4129	32.1
	f1	31 - #5 @ 1'-0	7'-8	248		
	f2	8 - #5 @ 1'-0	30'-8	256		
	g1	31 - #5 @ 1'-0	7'-8	357		
	g2	9 - #7 @ 0'-11	30'-8	564		
3'-6 x 9' x 31'	d2	58 - #10 AS SHOWN	10'-10	2704	4478	36.2
	f1	31 - #5 @ 1'-0	8'-8	280		
	f2	9 - #5 @ 1'-0	30'-8	288		
	g1	36 - #6 @ 0'-10	8'-8	469		
	g2	9 - #8 @ 1'-0	30'-8	737		
3'-6 x 9' x 33'	d2	58 - #10 AS SHOWN	10'-10	2704	5005	38.5
	f1	33 - #5 @ 1'-0	8'-8	298		
	f2	9 - #5 @ 1'-0	32'-8	307		
	g1	33 - #7 @ 1'-0	8'-8	585		
	g2	10 - #9 @ 0'-11	32'-8	1111		



FOOTING NOTES:

THESE SPREAD FOOTINGS ARE DESIGNED AND DETAILED TO BE USED WITH THE CAP AND COLUMN DETAILS OF THE TEE PIERS AS SHOWN ON SHEET H40-81-06.

THESE SPREAD FOOTINGS SHALL EXTEND AT LEAST 6 INCHES INTO SUITABLE FOUNDATION ROCK AND THE LAST 6 INCHES OF ROCK EXCAVATION SHALL BE TO NEAT LINES OF MASONRY. THE FOUNDATION ROCK SHALL HAVE A MINIMUM LRFD NOMINAL BEARING RESISTANCE OF 30 KIIPS PER SQUARE FOOT (ALLOWABLE BEARING VALUE OF AT LEAST 5 TONS PER SQUARE FOOT).

04-12 LATEST REVISION DATE <i>Thomas E. Mc Donnell</i> APPROVED BY BRIDGE ENGINEER	
	STANDARD DESIGN - 40' ROADWAY, THREE SPAN BRIDGE PRETENSIONED PRESTRESSED CONCRETE BEAM BRIDGES AUGUST, 2009
	TEE PIER - SPREAD FOOTINGS 45° SKEW - H=16' TO 24' H40-87-06