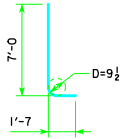


TYPICAL SECTION



d2

NOTE: D = PIN DIAMETER. DIMENSIONS ARE OUT TO OUT.

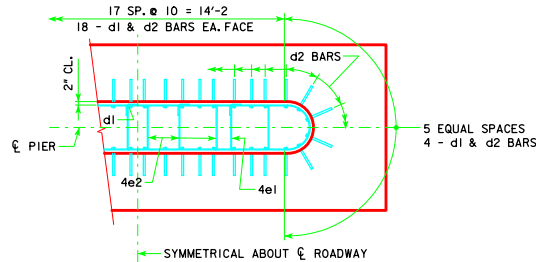
NOTE: THE REINFORCING STEEL QUANTITY IS TO BE INCLUDED ON THE SUMMARY QUANTITIES SHEET IN THE PLAN.

NOTE: THE CONCRETE QUANTITY IS TO BE INCLUDED ON THE SUMMARY QUANTITIES SHEET IN THE PLAN.

NOTE: THE PILE TYPE IS TO BE INCLUDED ON THE SUMMARY QUANTITIES SHEET IN THE PLAN.

H IN FT.	CL - CL ABUT. BRG.	PILING (HP10x57)		FOOTING SIZE
		NO. & LAYOUT	① LRFD PU, STRENGTH I DES. LOAD (KIPS)	
18	201'-4	13A	213	3'-6 x 8' x 21'
	213'-10	14A	207	
	226'-4	14A	217	
16 TO 21	243'-0	15A	217	3'-6 x 8' x 21'
	201'-4	13A	217	
	213'-10	14A	212	
18	226'-4	15A	213	3'-6 x 8' x 21'
	243'-0	16A	202	
	201'-4	14A	208	
22 TO 24	213'-10	14A	216	3'-6 x 8' x 21'
	226'-4	15A	217	
	243'-0	16A	206	

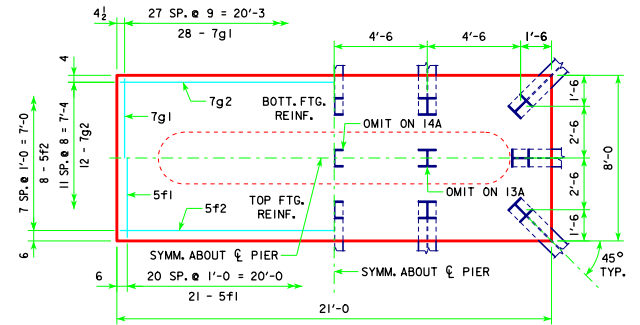
FOOTING SIZE	REINFORCING STEEL (ONE FOOTING)				TOTAL WEIGHT (LB.)	STRUCTURAL CONCRETE (CY)
	BAR	NO., SIZE & SPACING	LENGTH	WEIGHT (LB.)		
3'-6 x 8' x 21'	d2	44 - #9 AS SHOWN	8'-7	1284	2570	21.8
	f1	21 - #5 @ 1'-0	7'-8	168		
	f2	8 - #5 @ 1'-0	20'-8	172		
	g1	28 - #7 @ 0'-9	7'-8	439		
	g2	12 - #7 @ 0'-8	20'-8	507		



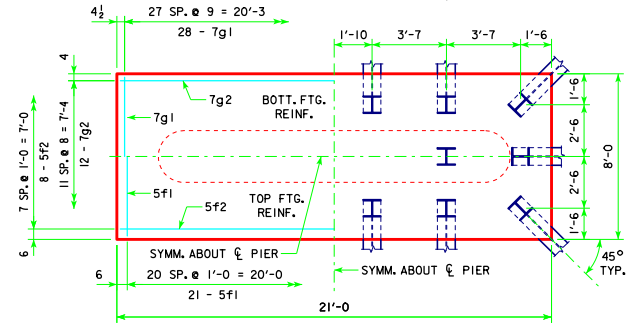
d2 BAR LAYOUT

(SEE SECTION A-A ON SHEET H40-57-14.)

① NOTE: PU, STRENGTH I DESIGN LOAD (KIPS) IS NOT THE VALUE USED IN THE FIELD FOR DRIVING PILES.



3'-6 x 8'-0 x 21'-0 FOR 13A, 14A & 15A



3'-6 x 8'-0 x 21'-0 FOR 16A

FOOTING NOTES:

THESE FOOTINGS ARE DESIGNED AND DETAILED TO BE USED WITH THE CAP AND COLUMN DETAILS OF THE TEE PIERS AS SHOWN ON SHEET H40-57-14.

BATTER PILES IN EXTERIOR ROWS I4 IN THE DIRECTION SHOWN.

STEEL PILING USED AS POINT BEARING SHALL HAVE A MINIMUM DISTANCE OF APPROXIMATELY 10 FEET FROM BOTTOM OF FOOTING TO TOP OF BEARING ROCK. THE PILE LAYOUTS ARE SUCH THAT THE DISTANCE CENTER TO CENTER OF ADJACENT PILING SHALL NOT EXCEED 8'-0.

PIER PILES SHALL BE DRIVEN TO VALUES SHOWN IN DESIGN PLANS.

LATEST REVISION DATE	 APPROVED BY BRIDGE ENGINEER	 STANDARD DESIGN - 40' ROADWAY, THREE SPAN BRIDGE PRETENSIONED PRESTRESSED CONCRETE BEAM BRIDGES SEPTEMBER, 2014	
		TEE PIER-HP10x57 SRL-2 STEEL PILE FOOTINGS 0° SKEW - H=16' TO 24'	H40-61-14