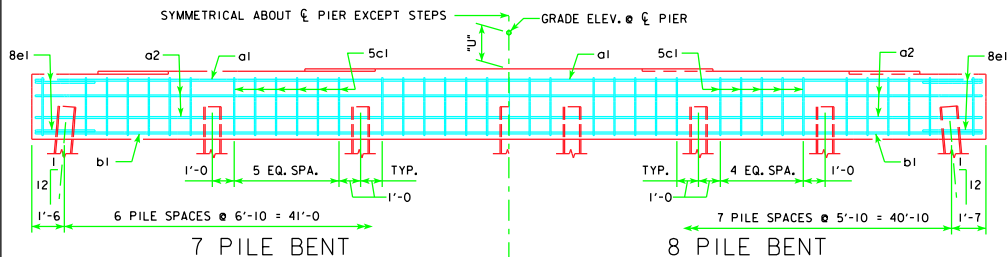


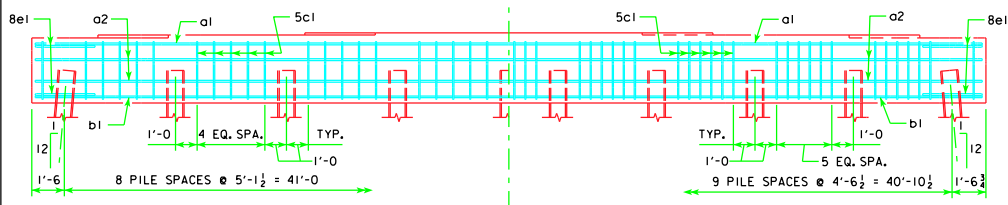
TYPICAL PLAN

NOTE:  
 THE HEIGHT OF THE STEPS ON THE BRIDGE SEAT IS EQUAL TO THE DIFFERENCE IN ELEVATIONS OF THE TOP OF SLAB AT ADJACENT BEAMS ALONG  $\phi$  PIER.  
 SEE SHEET H30-29-06 FOR "U" DIMENSION.



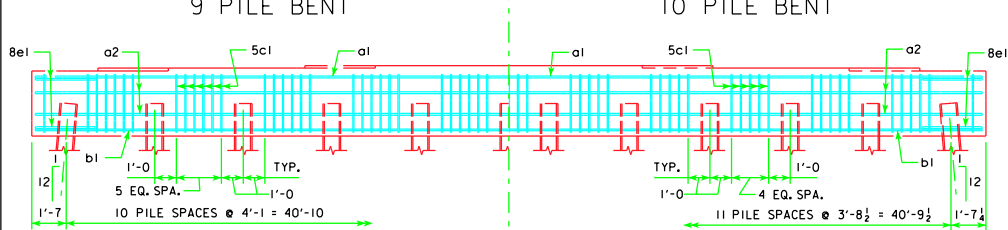
7 PILE BENT

8 PILE BENT



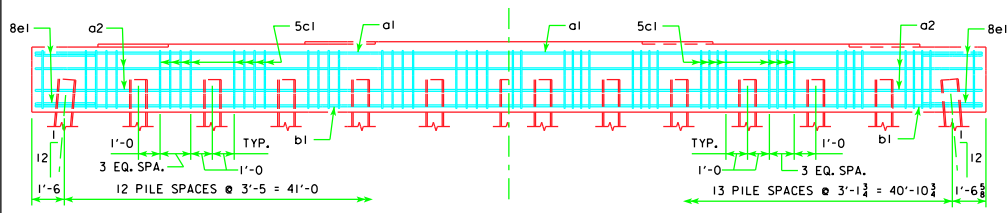
9 PILE BENT

10 PILE BENT



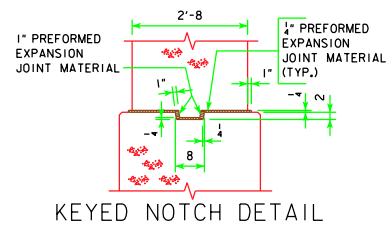
11 PILE BENT

12 PILE BENT

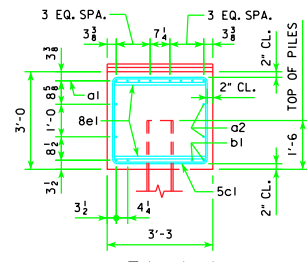


13 PILE BENT

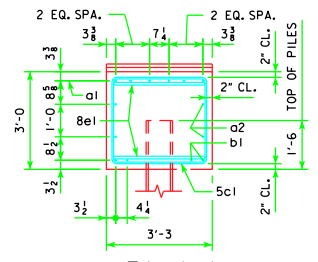
14 PILE BENT



KEYED NOTCH DETAIL



VIEW A-A FOR 7, 8, 9 & 10 PILE BENTS



VIEW A-A FOR 11, 12, 13 & 14 PILE BENTS

REVISED 07-10 - SHEET WAS REVISED TO MEET LRFD SPECIFICATIONS.

07-10 LATEST REVISION DATE  <i>Thomas C. McQuinn</i> APPROVED BY BRIDGE ENGINEER	 STANDARD DESIGN - 30' ROADWAY, THREE SPAN BRIDGES <b>PRETENSIONED PRESTRESSED CONCRETE BEAM BRIDGES</b> DECEMBER, 2006	
	<b>PILE BENT PIERS</b> 45° SKEW	<b>H30-54-06</b>