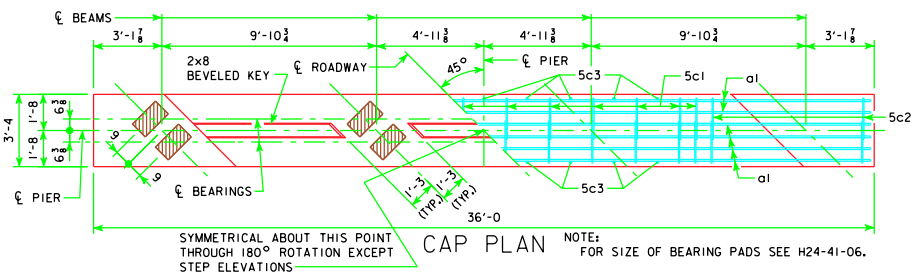
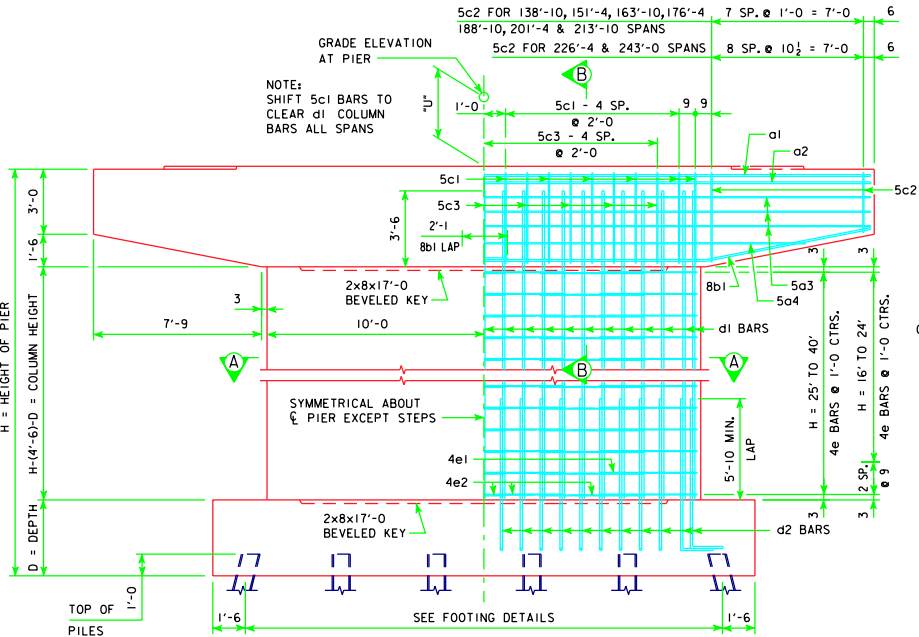


REVISED 01-10 - SHEET WAS REVISED TO MEET LRFD SPECIFICATIONS.

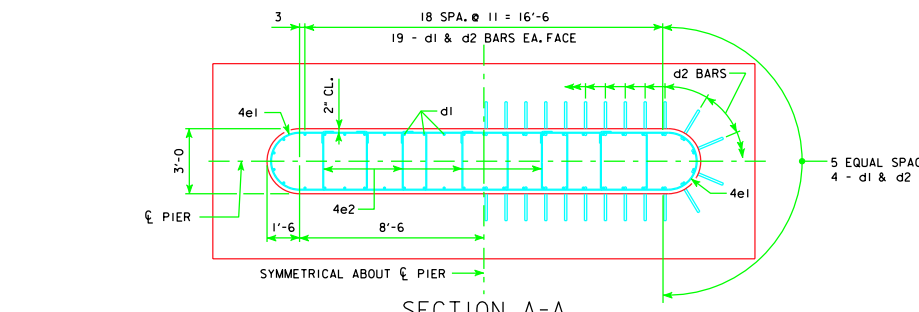


**CAP PLAN**

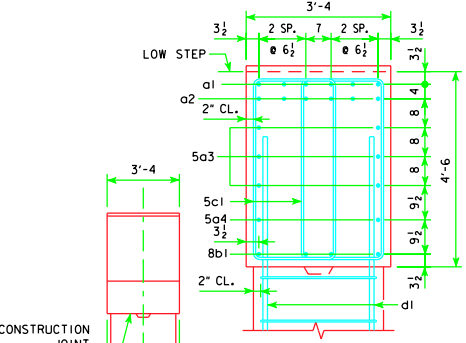
NOTE: FOR SIZE OF BEARING PADS SEE H24-41-06.



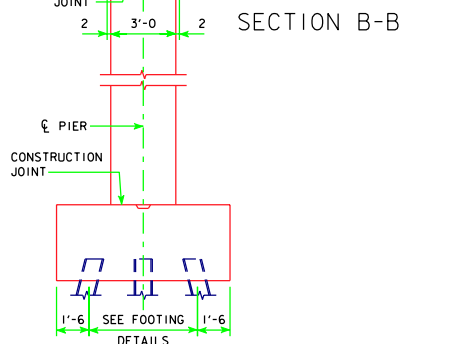
**FRONT ELEVATION**



**SECTION A-A**



**SECTION B-B**



**END ELEVATION**

SEE SHEET H24-31-06 FOR STEP REINFORCING STEEL QUANTITY AND DETAILS.

**PIER NOTES:**  
 SEE "TEE PIER NOTES" ON H24-02-06 FOR NOTES REGARDING APPLICATION OF THESE PIER STANDARDS.  
 MINIMUM CLEAR DISTANCE FROM FACE OF CONCRETE TO NEAR REINFORCING BAR SHALL BE 2 INCHES UNLESS OTHERWISE NOTED OR SHOWN.  
 ELIMINATE 2x8 BEVELED KEYWAY ON TOP OF CAP FOR EXPANSION PIERS.  
 SEE SHEET H24-29-06 FOR "U" DIMENSION.

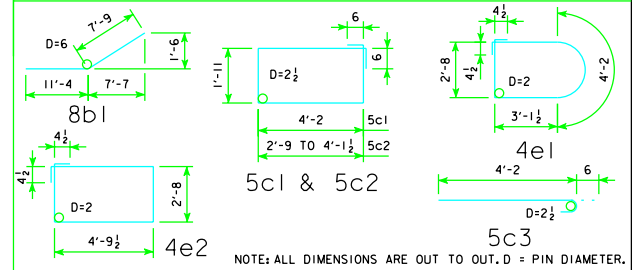
**CAP**

REINFORCING STEEL	138'-10		151'-4		163'-10		176'-4		188'-10		201'-4		213'-10		226'-4		243'-0							
	BAR LENGTH	SHAPE	NO.	SIZE	WEIGHT	NO.	SIZE	WEIGHT	NO.	SIZE	WEIGHT	NO.	SIZE	WEIGHT	NO.	SIZE	WEIGHT	NO.	SIZE	WEIGHT				
a1	35'-8		6	7	437	6	7	437	6	7	437	6	7	437	6	7	437	6	7	437	6	7	437	
a2	35'-8		6	7	437	6	7	437	6	7	437	6	7	437	6	7	437	6	7	437	6	7	437	
5c3	35'-8		6	5	223	6	5	223	6	5	223	6	5	223	6	5	223	6	5	223	6	5	223	
5c4	29'-8		2	5	62	2	5	62	2	5	62	2	5	62	2	5	62	2	5	62	2	5	62	
8b1	19'-1		8	8	408	8	8	408	8	8	408	8	8	408	8	8	408	8	8	408	8	8	408	
5c1	13'-2		24	5	330	24	5	330	24	5	330	24	5	330	24	5	330	24	5	330	24	5	330	
5c2	VARIES		32	5	391	32	5	391	32	5	391	32	5	391	32	5	391	32	5	391	32	5	391	
5c3	4'-8		18	5	88	18	5	88	18	5	88	18	5	88	18	5	88	18	5	88	18	5	88	
TOTAL (L.B.)					2376		2376		2376		2510		2510		2644		2644		2850		2850		2850	
STRUCTURAL CONCRETE (CY)					19.2		19.2		19.2		19.2		19.2		19.2		19.2		19.2		19.2		19.2	

**COLUMN**

H IN FEET	COLUMN HEIGHT	STRUCTURAL CONCRETE (CY)	REINFORCING STEEL												TOTAL WEIGHT (L.B.)											
			d1 BAR		4e1 BAR		4e2 BAR		4e1 BAR		4e2 BAR		4e1 BAR			4e2 BAR										
			NO.	SIZE	LENGTH	WEIGHT	NO.	SIZE	LENGTH	WEIGHT	NO.	SIZE	LENGTH	WEIGHT	NO.	SIZE	LENGTH	WEIGHT	NO.	SIZE	LENGTH	WEIGHT	NO.	SIZE	LENGTH	WEIGHT
16	8'-0	17.2	46	10	11'-6	2276	18	4	13'-10	166	36	4	15'-8	377	2819											
17	9'-0	19.4	46	10	12'-6	2474	20	4	13'-10	185	40	4	15'-8	419	3078											
18	10'-0	21.5	46	10	13'-6	2672	22	4	13'-10	203	44	4	15'-8	460	3335											
19	11'-0	23.7	46	10	14'-6	2870	24	4	13'-10	222	48	4	15'-8	502	3594											
20	12'-0	25.8	46	10	15'-6	3068	26	4	13'-10	240	52	4	15'-8	544	3852											
21	13'-0	28.0	46	10	16'-6	3266	28	4	13'-10	259	56	4	15'-8	586	4111											
22	14'-0	30.1	46	10	17'-6	3464	30	4	13'-10	277	60	4	15'-8	628	4369											
23	15'-0	32.3	46	10	18'-6	3662	32	4	13'-10	296	64	4	15'-8	670	4628											
24	16'-0	34.4	46	10	19'-6	3860	34	4	13'-10	314	68	4	15'-8	712	4886											
25	16'-6	35.5	46	10	20'-0	3959	34	4	13'-10	314	68	4	15'-8	712	4985											
26	17'-6	37.6	46	10	21'-0	4157	36	4	13'-10	333	72	4	15'-8	754	5244											
27	18'-6	39.8	46	10	22'-0	4355	38	4	13'-10	351	76	4	15'-8	795	5501											
28	19'-6	41.9	46	10	23'-0	4553	40	4	13'-10	370	80	4	15'-8	837	5760											
29	20'-6	44.1	46	10	24'-0	4751	42	4	13'-10	388	84	4	15'-8	879	6018											
30	21'-6	46.2	46	10	25'-0	4948	44	4	13'-10	407	88	4	15'-8	921	6276											
31	22'-6	48.4	46	10	26'-0	5146	46	4	13'-10	425	92	4	15'-8	963	6534											
32	23'-6	50.5	46	10	27'-0	5344	48	4	13'-10	444	96	4	15'-8	1005	6793											
33	24'-6	52.7	46	10	28'-0	5542	50	4	13'-10	462	100	4	15'-8	1047	7051											
34	25'-6	54.8	46	10	29'-0	5740	52	4	13'-10	481	104	4	15'-8	1088	7309											
35	26'-6	57.0	46	10	30'-0	5938	54	4	13'-10	499	108	4	15'-8	1130	7567											
36	27'-6	59.1	46	10	31'-0	6136	56	4	13'-10	517	112	4	15'-8	1172	7825											
37	28'-6	61.3	46	10	32'-0	6334	58	4	13'-10	536	116	4	15'-8	1214	8084											
38	29'-6	63.4	46	10	33'-0	6532	60	4	13'-10	554	120	4	15'-8	1256	8342											
39	30'-6	65.6	46	10	34'-0	6730	62	4	13'-10	573	124	4	15'-8	1298	8601											
40	31'-6	67.7	46	10	35'-0	6928	64	4	13'-10	591	128	4	15'-8	1340	8859											

**BENT BAR DETAILS**



NOTE: ALL DIMENSIONS ARE OUT TO OUT. D = PIN DIAMETER.

**Iowa Department of Transportation Highway Division**  
 STANDARD DESIGN - 24' ROADWAY, THREE SPAN BRIDGE  
**PRETENSIONED PRESTRESSED CONCRETE BEAM BRIDGES**  
 DECEMBER, 2006

**TEE PIER CAP AND COLUMN**  
 45° SKEW

H24-71-06

LATEST REVISION DATE  
 APPROVED BY BRIDGE ENGINEER  
 [Signature]