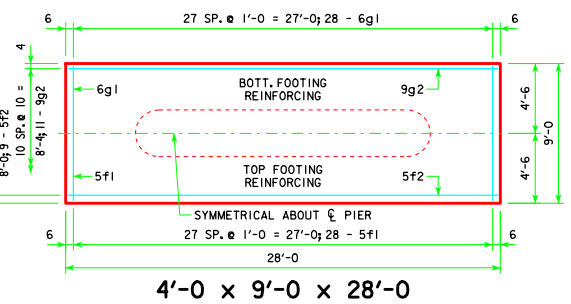
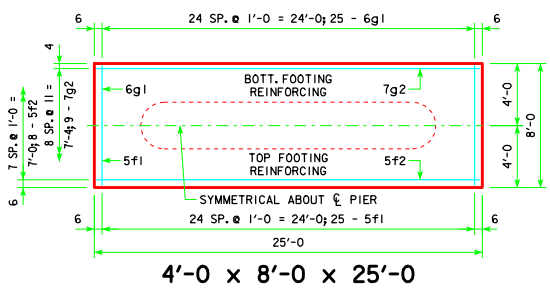
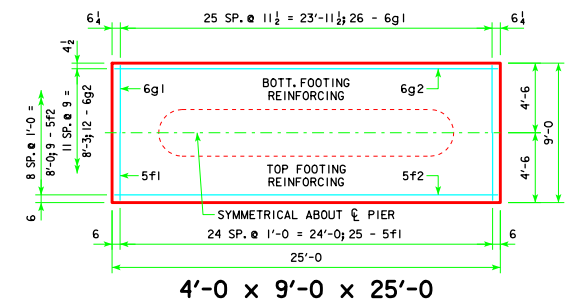
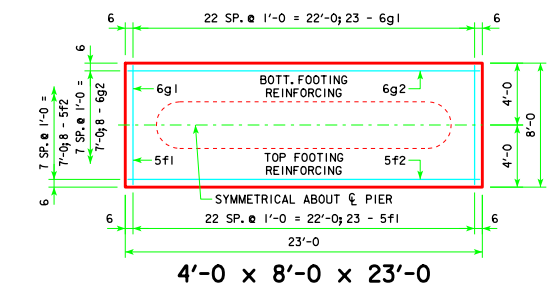


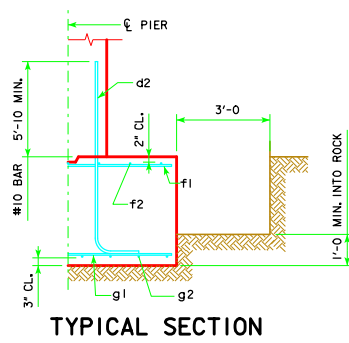
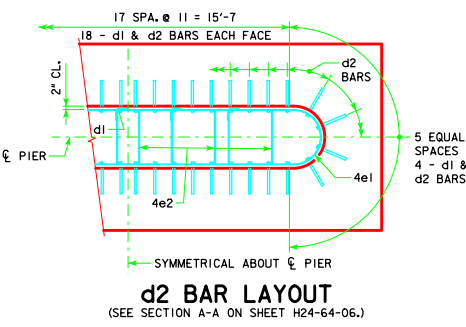
d2

NOTE: D = PIN DIAMETER.
DIMENSIONS ARE OUT TO OUT.



H IN FT.	℄ - ℄ ABUT. BRG.	FOOTING SIZE
25 TO 27	138'-10	4' x 8' x 23'
	151'-4	
	163'-10	
	176'-4	
	188'-10	
28 TO 30	201'-4	4' x 8' x 25'
	213'-10	
	226'-4	
	239'-0	
	251'-6	
31 TO 33	264'-0	4' x 9' x 25'
	276'-6	
	289'-0	
	301'-6	
	314'-0	
34 TO 36	326'-6	4' x 9' x 25'
	339'-0	
	351'-6	
	364'-0	
	376'-6	
37 TO 40	389'-0	4' x 9' x 28'
	401'-6	
	414'-0	
	426'-6	
	439'-0	

FOOTING SIZE	REINFORCING STEEL (ONE FOOTING)				STRUCTURAL CONCRETE (CY)
	BAR	NO., SIZE & SPACING	LENGTH	TOTAL WEIGHT (LB.)	
4' x 8' x 23'	d2	44 - #10 AS SHOWN	11'-4	2146	3056
	f1	23 - #5 @ 1'-0	7'-8	184	
	f2	8 - #5 @ 1'-0	22'-8	189	
	g1	23 - #6 @ 1'-0	7'-8	265	
	g2	8 - #6 @ 1'-0	22'-8	272	
4' x 8' x 25'	d2	44 - #10 AS SHOWN	11'-4	2146	3294
	f1	25 - #5 @ 1'-0	7'-8	200	
	f2	8 - #5 @ 1'-0	24'-8	206	
	g1	25 - #6 @ 1'-0	7'-8	288	
	g2	9 - #7 @ 0'-11	24'-8	454	
4' x 9' x 25'	d2	44 - #10 AS SHOWN	11'-4	2146	3387
	f1	25 - #5 @ 1'-0	8'-8	226	
	f2	9 - #5 @ 1'-0	24'-8	232	
	g1	26 - #6 @ 0'-11 1/2	8'-8	338	
	g2	12 - #6 @ 0'-9	24'-8	445	
4' x 9' x 28'	d2	44 - #10 AS SHOWN	11'-4	2146	4058
	f1	28 - #5 @ 1'-0	8'-8	253	
	f2	9 - #5 @ 1'-0	27'-8	260	
	g1	28 - #6 @ 1'-0	8'-8	364	
	g2	11 - #9 @ 0'-10	27'-8	1035	



FOOTING NOTES:

THESE SPREAD FOOTINGS ARE DESIGNED AND DETAILED TO BE USED WITH THE CAP AND COLUMN DETAILS OF THE TEE PIERS AS SHOWN ON SHEET H24-64-06.

THESE SPREAD FOOTINGS SHALL EXTEND AT LEAST 6 INCHES INTO SUITABLE FOUNDATION ROCK AND THE LAST 6 INCHES OF ROCK EXCAVATION SHALL BE TO NEAT LINES OF MASONRY. THE FOUNDATION ROCK SHALL HAVE A MINIMUM LRFD NOMINAL BEARING RESISTANCE OF 30 KIIPS PER SQUARE FOOT (ALLOWABLE BEARING VALUE OF AT LEAST 5 TONS PER SQUARE FOOT).

LATEST REVISION DATE 04-12	APPROVED BY BRIDGE ENGINEER <i>Thomas E. McQuinn</i>		
		STANDARD DESIGN - 24' ROADWAY, THREE SPAN BRIDGE PRETENSIONED PRESTRESSED CONCRETE BEAM BRIDGES DECEMBER, 2006	
TEE PIER - SPREAD FOOTINGS 30° SKEW - H=25' TO 40'		H24-70-06	

REVISED 04-12 - EXCAVATION LIMIT WAS CHANGED TO 3'-0."