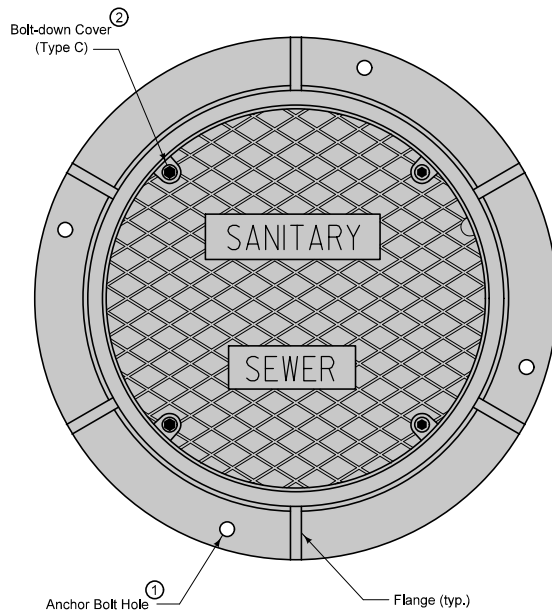


**TYPE A**

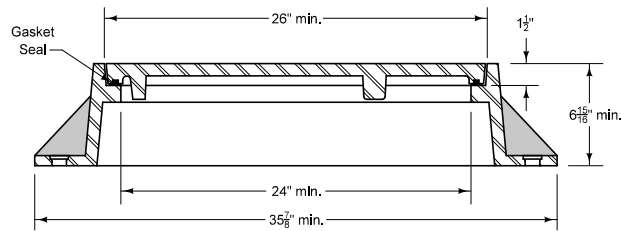
Two-piece fixed casting

**TYPE C**

Two-piece fixed casting with bolt-down cover<sup>②</sup>



PLAN



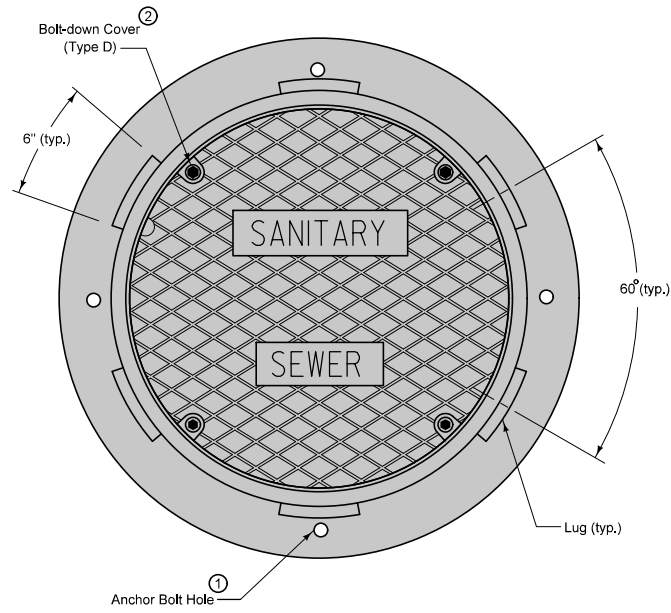
TYPICAL SECTION

**TYPE B**

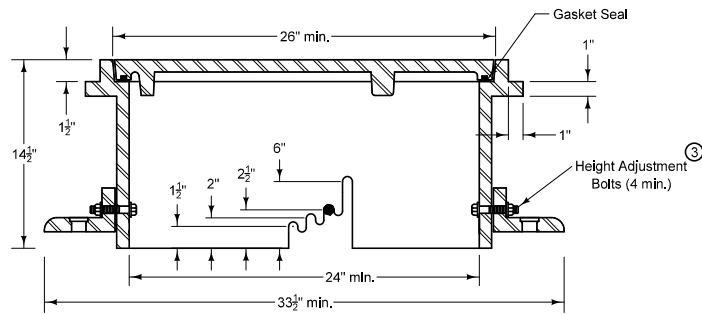
Three-piece floating casting

**TYPE D**

Three-piece floating casting with bolt-down cover<sup>②</sup>



PLAN



TYPICAL SECTION

Frame Notes:  
Size and spacing of lugs and flanges may vary.

Cover Notes:  
Roughness pattern and text style may vary.  
Minimum one concealed pickhole.

- ① When the contract documents require the frame to be attached to the structure, drill four 7/8" diameter holes or slots, equally spaced around frame.
- ② If specified, furnish bolt down frame and cover with four 1/2" x 2 1/2" stainless steel, hex head, recessed cap screws. Secure cover with screws, washers, and rubber gasket seals.
- ③ Set casting at proper grade using one of the adjustment slots. Remove bolts upon completion of paving.

FIGURE 6010.601 SHEET 1 OF 1

		REVISION
		3 04-21-15
FIGURE 6010.601	STANDARD ROAD PLAN	<b>SW-601</b>
		SHEET 1 of 1
<small>REVISIONS: Minor revision to depict adjustability of TYPE B and TYPE D casting. Modified circle note 3.</small>		
<small>SUDAS DIRECTOR</small>		<small>DESIGN METHODS ENGINEER</small>
<b>CASTINGS FOR SANITARY SEWER MANHOLES</b>		