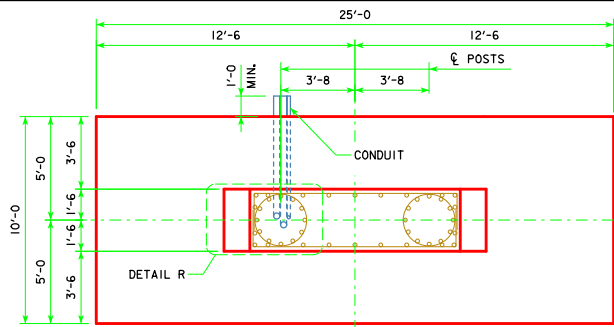
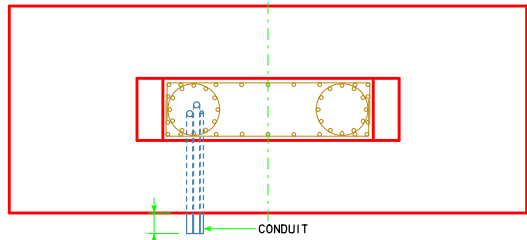


REVISION: 06-13 - CHANGED LABEL FOR DETAIL STEEL OVERHEAD SIGN TRUSS TO SOST-18-11 - THIS SHEET ISSUED 03-13.

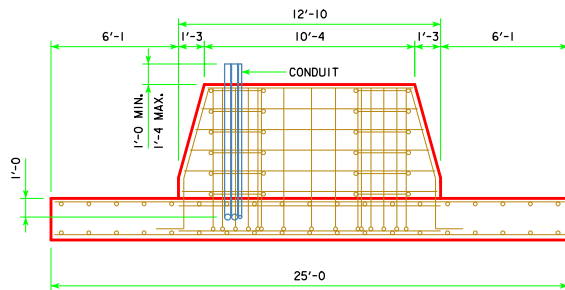


FOUNDATION PLAN FOR LEFT TRUSS SUPPORT
 LOCATED AT MEDIAN FOR TYPICAL DESIGNS
 ANCHOR BOLT ASSEMBLIES AND SELECTED REINFORCING BARS NOT SHOWN

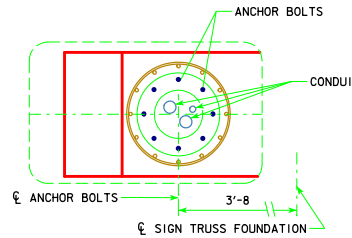
TRAFFIC FLOW →



FOUNDATION PLAN FOR RIGHT TRUSS SUPPORT
 LOCATED AT OUTSIDE SHOULDER FOR TYPICAL DESIGNS
 ANCHOR BOLT ASSEMBLIES AND SELECTED REINFORCING BARS NOT SHOWN

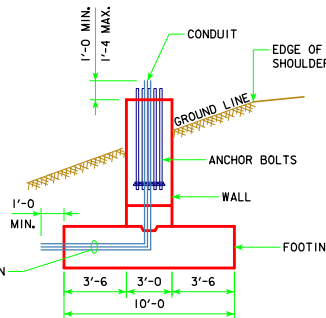


SIDE ELEVATION
 ANCHOR BOLT ASSEMBLIES NOT SHOWN



DETAIL R
 LOCATION OF CONDUIT WITHIN ANCHOR BOLT CIRCLE
 STEM WALL PERIMETER REINFORCING BARS NOT SHOWN

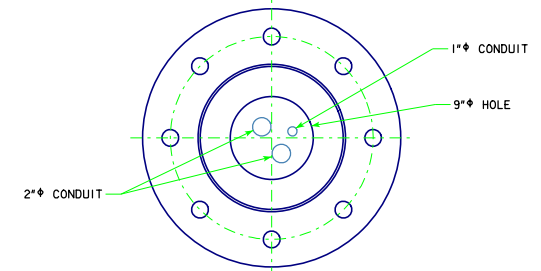
THIS SHEET FOR DMS TRUSSES ONLY
 ELECTRICAL CONDUIT IS REQUIRED IN FOUNDATIONS SUPPORTING TRUSSES WITH DYNAMIC MESSAGE SIGNS.



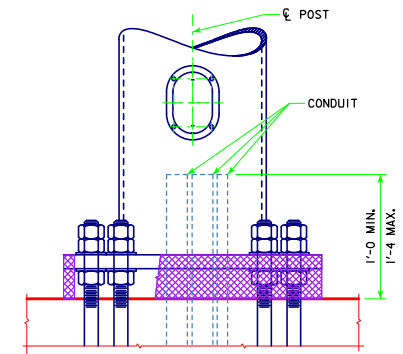
END ELEVATION
 REINFORCING BARS NOT SHOWN

GENERAL NOTES:

FOR FOUNDATIONS SUPPORTING TRUSSES WITH DYNAMIC MESSAGE SIGNS, PLACE ONE 1" CONDUIT AND TWO 2" CONDUIT WITHIN THE ANCHOR BOLT CIRCLE CLOSEST TO THE DIRECTION OF THE APPROACHING TRAFFIC. EXTEND CONDUIT ENDS A MINIMUM OF 1'-0" ABOVE FOUNDATION WALL AND 1'-0" PAST EDGE OF FOUNDATION FOOTING ON SIDE AWAY FROM ROADWAY. CONDUIT SHALL BE PLACED IN BOTH FOUNDATIONS UNLESS OTHERWISE INDICATED ON DETAIL PROJECT PLANS. ALL CONDUIT SHALL BE SCHEDULE 40 PLASTIC.



BASE PLATE PLAN
 CONDUIT IS PRESENT ONLY IN POSTS WITH HAND HOLES



BASE SIDE VIEW
 OPPOSITE OF TRAFFIC SIDE
 NOT ALL ANCHOR BOLTS SHOWN

NOTE: SEE THE FOLLOWING STANDARD SHEETS FOR ELECTRICAL ACCESS DETAILS IN SUPPORT POSTS FOR DMS TRUSS DESIGNS:
 STANDARD SHEET SOST-06-11 FOR 14" POSTS (50'-100' TRUSS SPANS)
 STANDARD SHEET SOST-07-11 FOR 16" POSTS (105'-130' TRUSS SPANS)

06-13 LATEST REVISION DATE	 APPROVED BY BRIDGE ENGINEER	 STANDARD DESIGN STEEL OVERHEAD SIGN TRUSS SEPTEMBER, 2011	CONDUIT LOCATION DETAILS 50'-130' SPANS
		SOST-18-11	