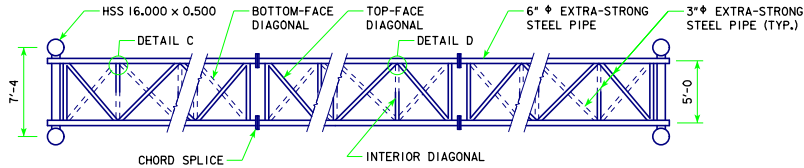


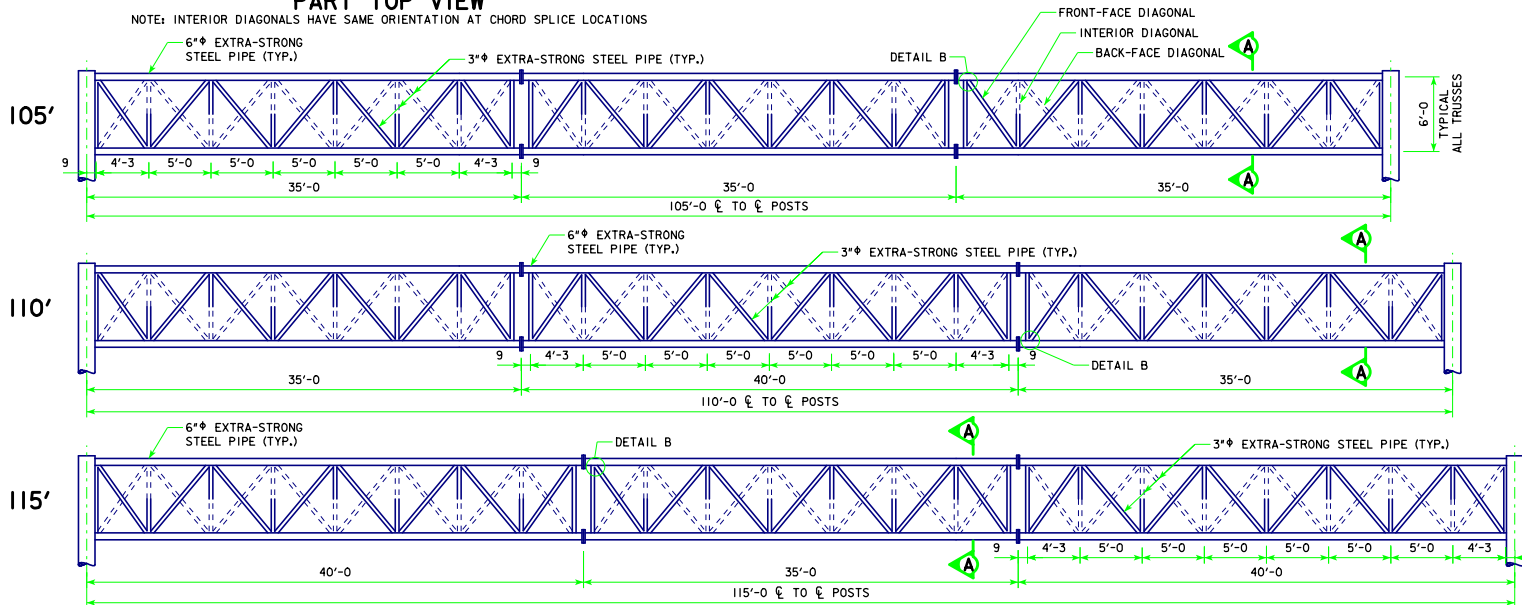
STEELOVERHEADSIGNTRUSS.DGN - SOST-04-11 - THIS SHEET ISSUED 9-11.



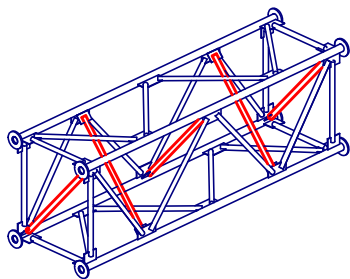
NOTE:
 BACK-FACE DIAGONALS AND BOTTOM-FACE DIAGONALS ARE SHOWN WITH DASHED LINES. INTERIOR DIAGONALS ARE SHOWN SOLID NEAR THE FRONT FACE AND TOP FACE. INTERIOR DIAGONALS ARE SHOWN DASHED TOWARDS THE BACK FACE AND BOTTOM FACE.

PART TOP VIEW

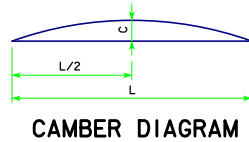
NOTE: INTERIOR DIAGONALS HAVE SAME ORIENTATION AT CHORD SPLICE LOCATIONS



PART ELEVATION VIEWS
 GUSSET PLATES NOT SHOWN

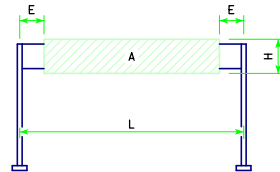


**ISOMETRIC VIEW
 TYPICAL TRUSS UNIT**

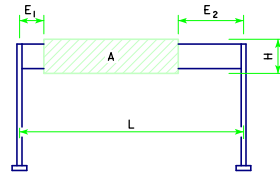


CAMBER DIAGRAM

SPAN L	CAMBER C
105'	2 1/4"
110'	2 1/2"
115'	2 3/4"



**SIGN AREA FOR
 STEEL OVERHEAD
 SIGN TRUSS**
 CENTERED



**SIGN AREA FOR
 STEEL OVERHEAD
 SIGN TRUSS**
 OFFSET
 SIGN OFFSET MAY BE MIRRORED
 (E₁ AND E₂ VALUES REVERSED).

ALLOWABLE SIGN AREA

CENTERED				
SPAN	MAX. SIGN HEIGHT	MIN. END DIST.		MAX. SIGN AREA
L	H	E		A
105'	19'-0"	27'-6"		950 S.F.
110'	19'-0"	30'-0"		950 S.F.
115'	19'-0"	32'-6"		950 S.F.
105'	14'-9"	20'-6"		944 S.F.
110'	14'-9"	23'-0"		944 S.F.
115'	14'-9"	25'-6"		944 S.F.
105'	12'-0"	13'-0"		948 S.F.
110'	12'-0"	15'-6"		948 S.F.
115'	12'-0"	18'-0"		948 S.F.
OFFSET				
SPAN	MAX. SIGN HEIGHT	MIN. LEFT END DIST.	MIN. RIGHT END DIST.	MAX. SIGN AREA
L	H	E ₁	E ₂	A
105'	19'-0"	10'-0"	62'-0"	627 S.F.
105'	19'-0"	15'-0"	54'-0"	684 S.F.
110'	19'-0"	10'-0"	68'-0"	608 S.F.
110'	19'-0"	15'-0"	60'-0"	665 S.F.
115'	19'-0"	10'-0"	73'-0"	608 S.F.
115'	19'-0"	15'-0"	66'-0"	646 S.F.
105'	14'-9"	10'-0"	48'-0"	693 S.F.
105'	14'-9"	15'-0"	37'-0"	782 S.F.
110'	14'-9"	10'-0"	54'-0"	679 S.F.
110'	14'-9"	15'-0"	45'-0"	738 S.F.
115'	14'-9"	10'-0"	61'-0"	649 S.F.
115'	14'-9"	15'-0"	51'-0"	723 S.F.
105'	12'-0"	10'-0"	27'-0"	816 S.F.
110'	12'-0"	10'-0"	36'-0"	768 S.F.
115'	12'-0"	10'-0"	45'-0"	720 S.F.
115'	12'-0"	15'-0"	29'-0"	852 S.F.

LATEST REVISION DATE
 APPROVED BY BRIDGE ENGINEER
Thomas E. Mc Donald



STANDARD DESIGN
STEEL OVERHEAD SIGN TRUSS
 SEPTEMBER, 2011
 ELEVATION VIEWS FOR TRUSS SPANS 105'-115' SPANS
SOST-04-11

NOTE: SEE STANDARD SHEET SOST-08-11 FOR SECTION A-A AND DETAILS A, B, C AND D.